

DRIVEN BY VALUE



Monthly Contractor Safety Meeting

June 2018

INTRODUCTION

- Facilities
- Emergency Exits/Meeting Point
- Cell Phones
- Safety Share
- This months focus
 - Special Presentation
 - Ted Jackson from H&S Field Services
 - Environmental Share
 - Branch Safety Performance
 - Safety Notice
 - Contractors Safety Manual
 - Section 2.0 Emergency Action and Incident Reporting
 - Section 5.17.9 thru 5.17.9.6 Mobile Crane

Freeport-McMoRan Inc. Public Portal

As of March 31, 2018, this site (<http://fcx365-public.sharepoint.com>) will be deleted.

The new site is <https://publicportal.fmi.com/>

Please update your bookmarks accordingly.

Abrasive Blasting and Spray Painting



Please notify Environmental Services at least 72 hours in advance of any spray painting or abrasive blasting project that is planned to commence on site.

Paint products and application method must be approved by Environmental Services prior to paint project execution. Abrasive blasting media and control methods must be approved prior to abrasive blasting projects. This should be done using the MOC process.

Except for architectural and spot painting, a spray painting log must be filled out for all painting activities.

June 2018

WHO DO I CONTACT WHEN I HAVE AN ENVIRONMENTAL QUESTION?



When in doubt. Call an Environmental Services representative.



SPILL HOTLINE — (928) 865-7745



Environmental Administration Office — Christina Seballos — (928) 865-6000

Environmental Yard, Satellite Accumulation, Roll Offs & Hoppers — Cody Watkins — (928)-965-6928, Bobby Scott — (928) 965-1770

**Asbestos & Lead, Air Quality — Shanna Holguin — (928) 965-0245, Waleed Sunna — (928) 215-5695, Sam Madan (928) 965-6030,
Rob Walker — (928)-215-6422**

Environmental ISO 14001 & Product Approvals — Ruth Chismar — (928) 215-5899 — Jon Anderson (928) 215-2730

**Water Quality & Wild Life — Jim Hogan — (928) 965-0061, Dee Broadwell — (928) 965-3142, Jamie Aberle — (928) 215-0667,
Leah Sunna (928) 215-2067**

Asset Recovery & Morenci Transfer Station — Bobby Scott — (928) 965-1770

Environmental Administration Accounting & Contracts — Cheryl Wright — (928) 965-1785



Safety Performance

6/4/2018

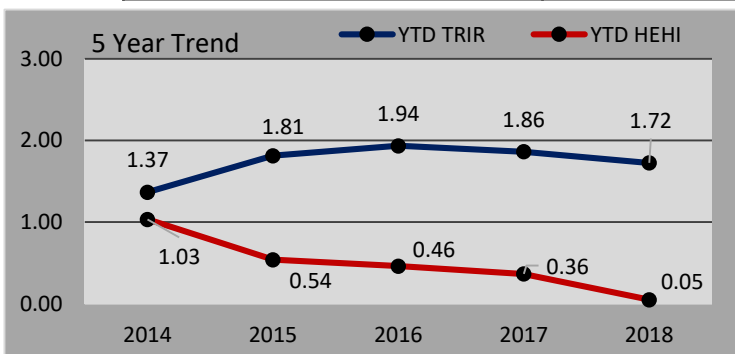
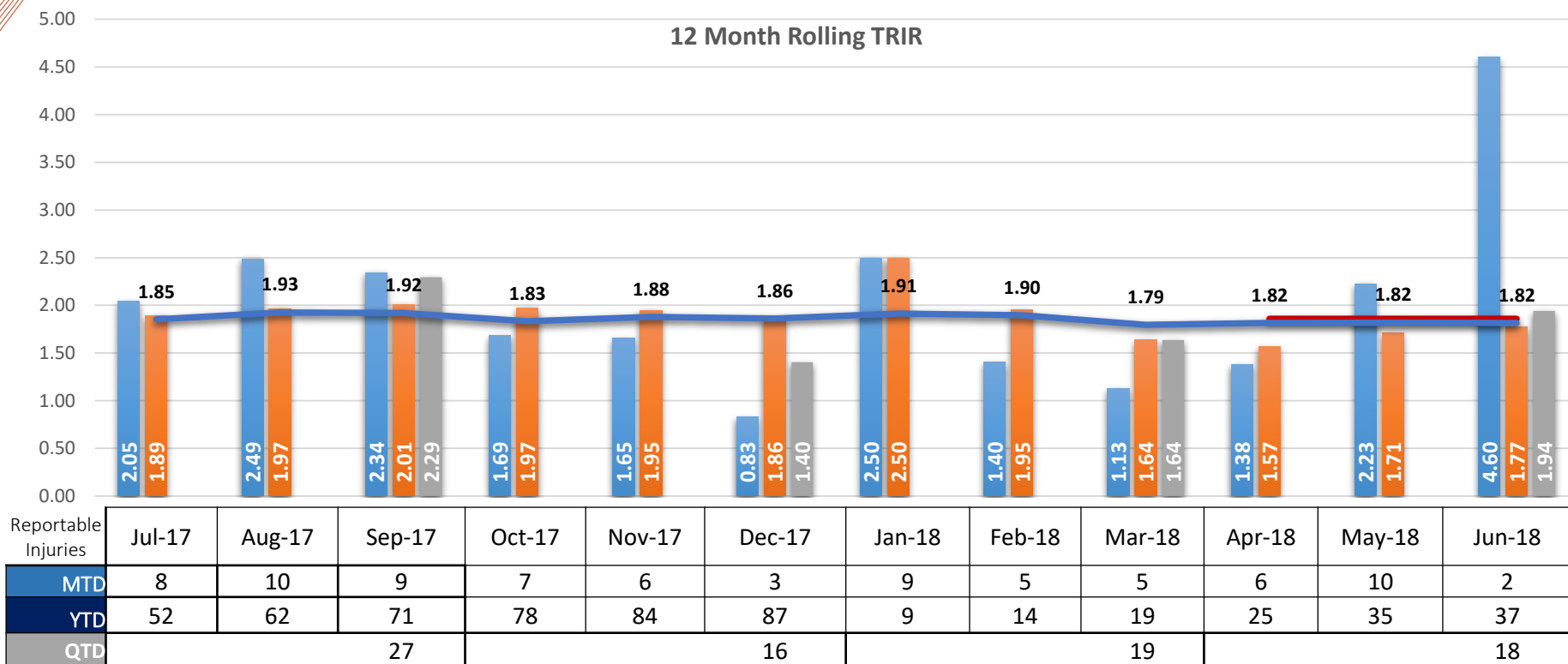
DRIVEN BY VALUE

| Day of the Year 154 | FMMO Employees working Safely (Reportable Injuries Only) | | | Days w/o Lost Time Injury | Hours w/o Lost Time Injury | Days w/o Reportable Injury (MT/RD) | Hours w/o Reportable Injury (MT/RD) |
|------------------------|---|-------|-------|---------------------------------|-------------------------------|--|---|
| | TOTAL | MTD | YTD | | | | |
| | 3,607 | 3,605 | 3,581 | | | | |

FREEPORT-McMoRAN

| REPORTABLE INJURY RATE TRIR | | | | Lost Time Injury Rate LTIR | | | | Property Damage Rate PDIR | | | | High Energy High Impact HEHI Events | | | |
|--------------------------------|------|------|--------|-------------------------------|------|------|--------|------------------------------|-------|-------|--------|--|------|------|--------|
| MTD | YTD | QTD | Target | MTD | YTD | QTD | Target | MTD | YTD | QTD | Target | MTD | YTD | QTD | Target |
| 2 | 37 | 18 | 1.86 | 0 | 6 | 2 | 0.45 | 3 | 269 | 111 | 13.29 | 0 | 1 | 0 | 0.36 |
| 4.60 | 1.77 | 1.94 | | 0.23 | 0.29 | 0.22 | | 10.91 | 12.88 | 11.97 | | 0.00 | 0.05 | 0.00 | |

Safety Dashboard as of 6/3/2018



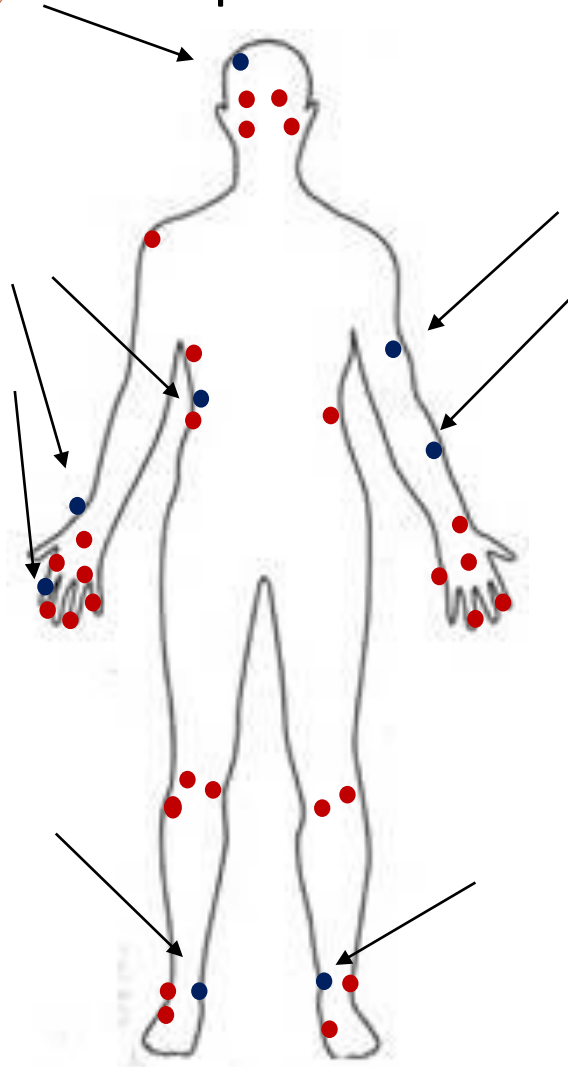
Injury Report

| Incident Date | Incident Type | Organization/ Division | Short Description |
|---------------|-----------------|---------------------------------|--|
| 2/13/2018 | Lost Time | Processing Leaching | **Reclassified to LTO on 2/13/2018, due to exhaustion of 90 days WRP** On 2/13//2018, an employee was removing the mast pins from the wicking machine when the mast shifted causing a laceration to the hand. |
| 5/21/2018 | Restricted Duty | Mine Haulage | The operator of the 615HT backed into the dipper of the 17 Shovel causing the mentor to feel pain in their neck and back. |
| 5/22/2018 | Restricted Duty | Processing Morenci Concentrator | An employee was walking towards the R1A tunnel and stepped on a rock that was hidden by "fines", twisted their ankle resulting in a fracture to the 5th metatarsal. |
| 5/22/2018 | First Aid | Administration Mercantile | A Conoco employee was exiting the walk in cooler when their finger was pinched in between the locking mechanism of the cooler door. |
| 5/23/2018 | First Aid | Utility Crew | An employee started sweating profusely, having issues breathing, and feeling shaky while shoveling in the Morenci Mill with a respirator on. |
| 5/23/2018 | First Aid | Contractor Townsite | A Sollers employee was picking up trash when a nail scraped the employee's upper left wrist causing a small laceration and some swelling. |
| 5/23/2018 | First Aid | Contractor Townsite | A Rummel employee was struck in the face by a piece of PVC Pipe causing a bloody nose. |
| 5/24/2018 | First Aid | Mine Haulage | The operator trainee of the 599HT, and mentor, was approaching Lone Star Crusher Intersection when the truck hit a pothole in the haul road causing the seatbelt to lock up. The trainee told his mentor he injured his shoulder and neck during the incident. |
| 5/25/2018 | Lost Time | Contractor Leaching | A BJ Cecil employee received burns to the arm, face, and neck while unloading acid at Ponderosa. |
| 5/28/2018 | Restricted Duty | Processing Morenci Concentrator | An employee was changing the bearing on the tail of the 7 on 30 Conveyor and twisted their ankle as they on 3" concrete step. |
| 5/28/2018 | Restricted Duty | Mercantile Community Center | On 5/28/2018, an employee slipped and fell hitting their head on the floor. The following day the employee was seen at the clinic for a closed head injury. |
| 5/31/2018 | Restricted Duty | Processing Morenci Concentrator | An employee was checking the seal while installing a bearing when the forklift operator side shifted and the employee's finger was pinched causing a fracture to the index finger. |
| 5/31/2018 | First Aid | Processing Maintenance Services | An employee was shoveling material when the employee's hand struck the metal frame. |
| 6/1/2018 | Restricted Duty | Mine Haulage | An employee was being loaded by the 45 Shovel and felt pain in their arm. |
| 6/1/2018 | Restricted Duty | Mine Resource Management | An employee was using the auger when it caught on the rocky material and twisted causing the employee's wrist to twist. |

● = Last 2 week's injuries

● = Year to date injuries.

Reportable Injuries - Top Injuries



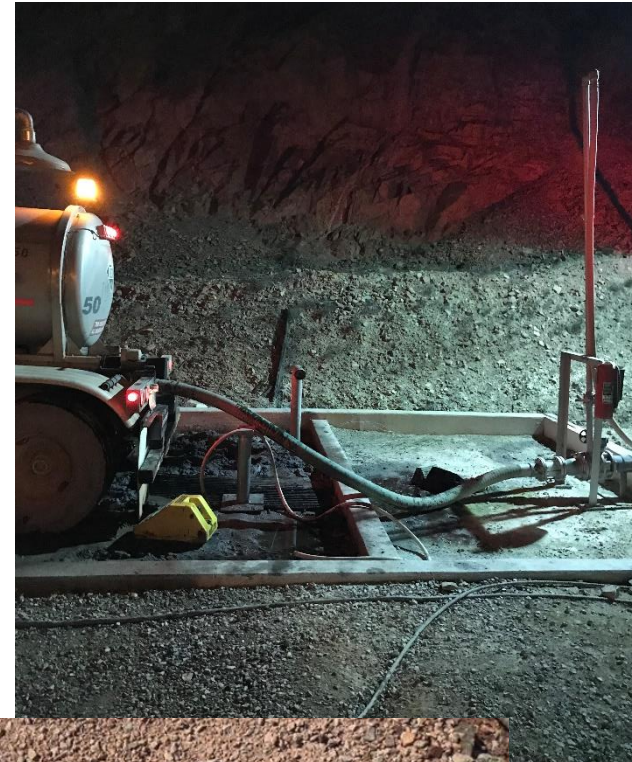
| Nature of Injury | Total No. of Injuries | | Medical Treatment | Restricted Duty | Lost Time |
|------------------|-----------------------|-----|-------------------|-----------------|-----------|
| Sprain/Strain | 14 | 38% | 0 | 11 | 3 |
| Cut/Laceration | 8 | 22% | 4 | 3 | 1 |
| Fracture | 5 | 14% | 0 | 5 | 0 |
| Irritation | 3 | 8% | 2 | 1 | 0 |
| Amputation | 1 | 3% | 1 | 0 | 0 |
| Avulsion | 1 | 3% | 0 | 1 | 0 |
| Abrasion | 1 | 3% | 1 | 0 | 0 |
| Bruise/Contusion | 1 | 3% | 0 | 1 | 0 |
| Burn (chemical) | 1 | 3% | 0 | 0 | 1 |
| Concussion | 1 | 3% | 0 | 1 | 0 |
| Hernia | 1 | 3% | 0 | 0 | 1 |

| Part of Body | Total No. of Injuries | | Medical Treatment | Restricted Duty | Lost Time |
|--------------|-----------------------|-----|-------------------|-----------------|-----------|
| Finger | 7 | 19% | 4 | 3 | 0 |
| Knee | 5 | 14% | 0 | 2 | 3 |
| Hand | 4 | 11% | 1 | 2 | 1 |
| Lower Back | 4 | 11% | 0 | 4 | 0 |
| Foot | 3 | 8% | 0 | 3 | 0 |
| Ankle | 3 | 8% | 0 | 3 | 0 |
| Face | 2 | 5% | 1 | 0 | 1 |
| Wrist | 2 | 5% | 0 | 2 | 0 |
| Eye | 2 | 5% | 2 | 0 | 0 |
| Shoulder | 1 | 3% | 0 | 1 | 0 |
| Abdomen | 1 | 3% | 0 | 0 | 1 |
| Chest | 1 | 3% | 0 | 1 | 0 |
| Head | 1 | 3% | 0 | 1 | 0 |
| Upper Arm | 1 | 3% | 0 | 1 | 0 |

Incident Recall

Lost Time

| | | | |
|--------------------------|---|------------|----------------|
| Date | 05.25.2018 | | |
| Organization | Contractor | | |
| Division | Leaching | | |
| Potential Risk | 3 | 2 | 6 |
| | Consequence | Likelihood | Potential Risk |
| Brief Description | A BJ Cecil employee received burns to the face and neck while unloading acid at Ponderosa Acid Unloading Station. | | |




Incident Recall

Property Damage

| | | | |
|--------------------------|---|------------|----------------|
| Date | 05.31.2018 | | |
| Organization | Mine | | |
| Division | Haulage | | |
| Potential Risk | 3 | 2 | 6 |
| | Consequence | Likelihood | Potential Risk |
| Brief Description | <p>The operator of the 625HT was progressing up the ramp and was going around some spillage. The 638HT was traveling down the 801 and was unable to avoid making contact with the 625HT truck. The Operator on the 625HT announced MAYDAY on the radio. The 801 ramp was shut down and all other Haul Trucks were removed from the ramp and re-routed. The area was secured and Maintenance personnel were brought in to determine if the trucks could be moved. Both Haul truck drivers involved were removed from the scene to continue their part of the investigation. Two other Operators were brought to the location to removed the trucks. The ramp was then re-opened.</p> | | |



| POTENTIAL FATAL EVENT ADVISORY | | | | | | | | | | | | | | | |
|---|---|----------------|----------------|-------|-------|------------|------|----------------|----------|-------|----------|-------|--------|----------------|--|
|  | Grasberg PFEA Titon Drill | | | | | | | | | | | | | | |
| | <table border="1"> <tr> <td>PFE #</td> <td>2018 - PFE - 4</td> </tr> <tr> <td>IMS #</td> <td>82883</td> </tr> <tr> <td>OPERATION:</td> <td>PTFI</td> </tr> <tr> <td>INCIDENT DATE:</td> <td>2/5/2018</td> </tr> <tr> <td>TIME:</td> <td>02:24 AM</td> </tr> <tr> <td>TYPE:</td> <td>Injury</td> </tr> <tr> <td>PFE Follow-Up:</td> <td></td> </tr> </table> | PFE # | 2018 - PFE - 4 | IMS # | 82883 | OPERATION: | PTFI | INCIDENT DATE: | 2/5/2018 | TIME: | 02:24 AM | TYPE: | Injury | PFE Follow-Up: | |
| | PFE # | 2018 - PFE - 4 | | | | | | | | | | | | | |
| | IMS # | 82883 | | | | | | | | | | | | | |
| | OPERATION: | PTFI | | | | | | | | | | | | | |
| INCIDENT DATE: | 2/5/2018 | | | | | | | | | | | | | | |
| TIME: | 02:24 AM | | | | | | | | | | | | | | |
| TYPE: | Injury | | | | | | | | | | | | | | |
| PFE Follow-Up: | | | | | | | | | | | | | | | |
| Issued By: | Contact For Additional Details: | | | | | | | | | | | | | | |

This Advisory is a NOTIFICATION of an event/condition, or potential, which may have resulted in a fatality at a Freeport-McMoRan location. The information below is intended to be used for proactive preventative purposes.

DESCRIPTION / DETAILS OF ADVISORY

At around 02:45 AM on Monday, February 5th 2018 in the Titon workshop a Sandvik mechanic was giving instructions to the Titon Drill #42 operator to position the feed rail perpendicular to ease spiral hose installation. The position of the mechanic giving instructions to the operator was about 2.6 meters in the front of the operator's cabin and about 3 meter from the feedrail that was positioned on the ground. While feed rail was nearly on perpendicular position, the connecting piece detached from the spindle rotary head and fell down onto the Drill boom (about 6 meters) then deflected off a structural member and hit a glancing blow to the mechanic's head (about 4.8 meters away). The connecting piece deflected from the victim's hardhat that was on his head, and landed 0.8 meters behind him. This contact caused laceration wounds on the left side of his head and abrasion on his right hand. The connection piece weight is 46 kg.

The accident investigation is being carried out to find out the root causes and to establish the actions to prevent recurrence.

FATAL RISKS

| | |
|-----------------|-----------------|
| Falling Objects | Choose an item. |
|-----------------|-----------------|

| | |
|--------------------------------|-----------------|
| Uncontrolled Release of Energy | Choose an item. |
|--------------------------------|-----------------|

OTHER SIGNIFICANT RISK (specific to site or task not categorized as global)

ABSENT / INSUFFICIENT CONTROLS CONTRIBUTING TO THE EVENT

- No clear procedures regarding canabilizing components for parts
- Mechanic didn't make sure the lock on the connecting piece to rotary spindle shaft was installed even after
- noticing there was three bolts uninstalled on the connecting piece to rotary spindle shaft and the other 9 bolts
- still loose.
- No SOP for the rotary head assembly work.

HEALTH AND SAFETY POLICIES

APPLICABLE STANDARDS / POLICIES / PROCEDURES

Mine Organization

- PFE Applied at 2 of 4 Divisions
- Gaps were identified in the Division
- No Action Items generated


Processing Organization

- PFE Applied at 1 of 7 Divisions
- Gaps was identified 1 Division
- No Action Items generated

Administration Organization

- PFE Applied at 0 of 12 Departments

DEE Alert 2018 5

| POTENTIAL FATAL EVENT ADVISORY | | FREEPORT-McMORAN | |
|---|---------------------------|---|----------------|
|  | RUNAWAY HAUL TRUCK | PFE # | 2018 - PFE - 5 |
| | | IMS # | 84155 |
| | | OPERATION | Bagdad |
| | | INCIDENT DATE | 4/7/2018 |
| | | TIME | 4:15 P.M. |
| Issued By: Justin Cross | | PFE Follow-Up: Near Miss | |
| | | Contact For Additional Details: Lloyd Murphy (928) 925-8204 | |

This Advisory is a NOTIFICATION of an event/condition, or potential which may have resulted in a fatality at a Freeport-McMORAN location. The information below is intended to be used for proactive preventative purposes.

| DESCRIPTION / DETAILS OF ADVISORY | |
|---|-------------------|
| <p>Summary: A loaded haul truck experienced brake over strokes on all four wheels resulting in the loss of all primary braking systems as it traveled down a ramp and through the primary crusher area.</p> <p>Description: At 12:16 p.m., a loaded Caterpillar 793 haul truck experienced a brake over stroke. A mechanic reset the brake, identifying no mechanical issues at the time. At 4:06 p.m., the same loaded truck experienced another brake over stroke while traveling down the 1800 ramp. The truck operator called a mechanic and was en route for repair at the LSP tie down when the truck lost all primary braking systems (service brake and retarder) due to brake over strokes on all four wheels.</p> <p>The truck began to accelerate, experiencing multiple engine overspeeds as it headed toward the primary crusher – an area of congestion. The operator initiated a Mayday advising anyone in the primary crusher area to vacate. The operator briefly engaged the emergency braking system using the hand lever but did not attempt to set the park brake.</p> <p>The truck accelerated up to 32 mph as it came through the crusher area. The operator steered the truck to the West 2 ramp as it is at an incline. The truck came to a stop at the bottom of the West 2 ramp allowing the operator to back the truck into the berm.</p> | |
| FATAL RISKS | |
| Uncontrolled Release of Energy | Vehicle Collision |
| Vehicle Impact to Person | N/A |
| OTHER SIGNIFICANT RISK (specific to site or task not categorized as global) | |
| N/A | |
| ABSENT / INSUFFICIENT CONTROLS CONTRIBUTING TO THE EVENT | |
| <ul style="list-style-type: none"> An investigation of the event revealed leaks in two of the haul truck air brake canisters, which likely contributed to the initial brake over strokes during the incidents at: <ul style="list-style-type: none"> 12:16 p.m. when the loaded truck was traveling down a 780-foot ramp with a 9.5 percent grade. 4:06 p.m. when the loaded truck was traveling down a 3,300-long ramp with a 10 percent grade, eventually losing all primary braking systems. The haul truck air brake pressure safety alarm did not activate when the air pressure dropped below 90 psi – a level that can lead to a brake over stroke. The secondary braking system was not fully engaged using the hand lever or the park brake as a means of stopping the truck. | |

Mine Organization

- PFE Applied at 2 of 4 Divisions
- No gaps were identified in the Division
- No Action Items generated

Processing Organization

- PFE Applied at 3 of 7 Divisions
- 2 gaps were identified 1 of the Divisions
- No Action Items generated

Administration Organization

- PFE Applied at 0 of 12 Departments

Alert 2018 6

FREEPORT-McMoRAN

| | |
|----------------|----------------|
| PFE # | PFE - 2018 - 6 |
| IMS # | 84726 |
| OPERATION: | Miami |
| INCIDENT DATE: | 4/26/2018 |
| TIME: | 2 p.m. |
| TYPE: | Injury |
| PFE Follow-Up: | |



**Electrical Exposure Event
at a 4160v Switch Gear**

Issued By: Dale Gossett

Contact For Additional Details: Dale Gossett 928-473-7204

This Advisory is a NOTIFICATION of an event/condition, or potential which may have resulted in a fatality at a Freeport-McMoRan location. The information below is intended to be used for proactive preventative purposes.

DESCRIPTION / DETAILS OF ADVISORY

Summary: A Miami electrician assisting in a load banking exercise with Empire electricians received a shock when he grabbed a pothead that was energized.

Description: A Miami Hydromet electrician was assisting three Empire electrical employees in performing load testing on an emergency backup generator in the mine. Before the test, the electricians took steps to disconnect the 4160v power at the transfer switch and believed it was de-energized.

After the test was complete, the Miami electrician went to help one of the Empire employees who was struggling to disconnect the test cable pothead from the generator. At some point after, the Miami electrician picked up the Miami side pothead connected to the transfer switch, placing his hand on one of the contacts inside and received an electrical shock.

A follow-up investigation revealed the mechanism to disengage the stabs from the contact points at the transfer switch failed. The handle on the switch indicated it was in the open position when in fact the stabs were still in the closed position, leaving the pothead energized during the test.

An RCA on this event is being conducted.

FATAL RISKS

| | |
|--------------------------|-----------------|
| Contact with Electricity | Choose an item. |
|--------------------------|-----------------|

| | |
|-----------------|-----------------|
| Choose an item. | Choose an item. |
|-----------------|-----------------|

OTHER SIGNIFICANT RISK (specific to site or task not categorized as global)

N/A

ABSENT / INSUFFICIENT CONTROLS CONTRIBUTING TO THE EVENT

- Failure to follow verification/tryout portion of the LOTOTO procedure
- Failure to visually verify the stabs were open through the window on the transfer switch
- Mechanism to disengage stabs from contact points failed

HEALTH AND SAFETY POLICIES

**APPLICABLE STANDARDS / POLICIES /
PROCEDURES**

Energy Control (LOTOTO)

LOTOTO

Mine Organization

- PFE Applied at 1 of 4 Divisions
- No gaps were identified in the Division
- No Action Items generated

Processing Organization

- PFE Applied at 1 of 7 Divisions
- No gaps were identified in the Divisions
- No Action Items generated

Administration Organization

- PFE Applied at 0 of 12 Departments

POWERED
BY COPPER



**Make
Safety
Personal...**



Contractor On-Boarding and Up-Dating

- Bryon Wiley, Estevan Varela and Chinenye Ifeanyi-Ileka – **Safety**
- Christina Seballos – **Environmental**
- Dusty Gatlin – **Training**
- Amanda Medina – **Contracts Administration**
- Gay Cole – **Contracts Management**

Processing

- Morenci Mill/Filter Plant/Moly Plant/CLP – **Cliff Mull**
928-965-2530
- Metcalf Mill/Tailings– **Jessica Rodriguez**
928-965-6104
- Hydromet – **Frank Maldonado**
928-965-0219
- C&C –**Bryon Wiley (Temporary Coverage)**
928-965-3540
- Maintenance Services – **Deborah Kamba**
928-965-4035
- Leaching – **John Koon**
928-215-0547

FMMO Safety Departments/Contacts

Administration

- All Administration/Including Town-Site – **Estevan Varela 928-965-0542**
- Industrial Hygiene – **Chineye Isichei 928-965-0824**

FMMO Safety Departments/Contacts

Mine

- Resource Management/Fragmentation/Elect Shop – **Trent Mitchell**
928-215-6000
- Mine Shops – **Garrit Culver**
928-965-4890
- Loading Support/Shovel & Drill/Fab Shop – **Danny Leyvas**
928-965-0292
- Haulage – **Robert Franco**
928-965-0198



3 Prioritized Safety Goals

1. Prevent Fatalities

2. Reduce Incident Severity

3. Improve Continuously

Workplace Exam Standard – What's New?

Who and What

- Competent person
- Examine each working place
- At least once each shift ***before work begins or as miners begin work in that place***
- For conditions that may adversely affect safety or health

Workplace Exam Standard – What's New?

Notification / Corrective Action

Current Rule (until 6/2/18)

- Where adverse conditions are found:
 - Promptly initiate corrective action

New Rule (effective 6/2/18)

- Where adverse conditions are found:
 - ***Promptly notify miners in the affected area***
 - Promptly initiate corrective action

Workplace Exam Standard – What's New?

Record of Examination

Current Rule (until 6/2/18)

- Must keep a record that the examination was conducted

New Rule (effective 6/2/18)

- Record of each exam ***must be made before end of shift***
- ***Record must include:***
 - ***Name of examiner***
 - ***Date of exam***
 - ***Location of areas examined***
 - ***Description of each adverse condition not corrected promptly***

Workplace Exam Standard – What's New?

Record Retention and Availability

Current Rule (until 6/2/18)

- Must retain for one year
- Make available for review by MSHA

New Rule (effective 6/2/18)

- Must retain for one year
- Make available for *inspection or copy upon request by*
 - *MSHA*
 - *Miners' representative(s)*

Workplace Exam Standard – What's New?

Supplementing the Record to Show Corrective Action

Current Rule (until 6/2/18)

- [NO PROVISION]

New Rule (effective 6/2/18)

- *When an adverse condition that was not promptly corrected is subsequently corrected, the record shall include or be supplemented to include the date of the corrective action*

Workplace Exam Standard – What’s Not New?

Some Things Remain the Same

- No change to the meaning of “competent person”
 - Not restricted to supervisors and foremen
 - Operator can designate
 - A person having abilities and experience that fully qualify him/her to perform the assigned duty, including the ability to recognize hazards and adverse conditions typical of the work area
- No change to the meaning of “working place”
 - A location where miners work
 - Includes mine roads traveled to and from the work area
 - Areas where work is not scheduled to be performed do not require examination
- No change to the meaning or interpretation of “adverse” in the context of adverse conditions requiring correction – MSHA believes the mining community understands what this means

Purpose of Streamlined Policies

- Site feedback: policies were often confusing and cumbersome, and not always consistent or usable in the field
- Consolidate the roles and responsibilities for all policies
- Provide usable document in the field, with only pertinent safety information, not policy administration
- Create alignment with audit and training requirements

Note: By creating one single set of administrative requirements, there are minor changes that affect all policies

Policy Release Dates

- March 7, 2018:
 - Confined Space, Technical Supplement, Permit
 - Hot Work, Permit
 - Working at Heights, Technical Supplement
- Q2 2018
 - Evaluation of initial rollout will determine count and date for new releases
- Previous policies were archived June 7th, 2018

Confined Space, Notable Changes

Policy, Technical Supplement (TS) and Permit

- No policy changes
- TS includes:
 - Atmospheric monitoring requirements
- Permit includes:
 - Regulatory requirements for General Industry and International sites
 - Additional signatures/initials from team members
 - Separate page to log all entrants

Hot Work, Notable Changes

Policy and Permit

- “Thorough inspection of the work area”
- Clarifies time of validity (one task, one shift)
- Promote evaluation and use of cold work
 - Challenge the practice of cutting everything with a torch
- No significant changes to permit

Working at Heights, Notable Changes

Policy and Technical Supplement

- 6' to 4' fall protection requirement
- No separate Open Hole policy/permit
 - Significant analysis conducted to determine feasibility of combining the two policies
- TS specifies:
 - Fall Arrest System requirements
 - Guardrail requirements
 - Hole protection requirements

Working at Heights and Open Hole

- Fatal Risk of work at height and work around floor openings is the fall from height
- Critical controls are the same for both activities
- All openings in walk/work surfaces that a person could fall through should be treated with the same controls and mitigations as leading edge work
- Streamlined policy requires no openings shall be created until fall prevention/mitigation is applied
- Technical supplement explains and clarifies fall protection measures/equipment

Previous policies were
archived on June 7th 2018

Contractors Safety Manual Part 1

Section 2.0 Emergency Action and Incident Reporting

2.1 General Procedures

In the event of a serious injury, immediately activate the site emergency response system, maintain scene safety and trained contractor personnel should render first aid to any incident victims. Contractor personnel shall immediately contact the Freeport-McMoRan Safety Department, and the Freeport-McMoRan project manager. Freeport-McMoRan senior management will address any media inquiries or announcements and make other decisions critical to the overall site.




Contractors Safety Manual Part 1

Section 2.0 Emergency Action and Incident Reporting

2.1 General Procedures

Emergency telephone numbers shall be posted at all contractor lunchrooms and meeting locations as well as where there may be a hardline available.

If an incident requires immediate notification to government agencies, the area must be secured and nothing disturbed or removed after evacuation of the injured employee until approval from all Government Agencies, and Freeport-McMoRan representatives is received. The area can only be released by the owner.



Contractors Safety Manual Part 1

Section 2.0 Emergency Action and Incident Reporting

2.2 Incident Reporting

- All employees shall promptly report any incident (including near-misses), no matter how slight, to their supervisor. All incidents shall also be reported to the Freeport-McMoRan Safety Department immediately.

Contractors Safety Manual Part 1

Section 2.0 Emergency Action and Incident Reporting

2.2 Incident Reporting

- Incidents of a serious nature may require “immediate” notification to government agencies. It is the responsibility of each contractor to ensure its leaders identify what incidents require “immediate” notification and maintain a list of numbers of who must be notified, and the time limits required (15 minutes in some cases with MSHA). If time permits a brief call to Freeport-McMoRan representatives will be made prior to notifying agencies such as MSHA. In some cases the site may make the call to the agency. Check with local site H&S for site-specific requirements.



Contractors Safety Manual Part 1

Section 2.0 Emergency Action and Incident Reporting

2.2 Incident Reporting

- A completed “Incident Reporting Form” must be provided to the Freeport-McMoRan site Safety Department within 24 hours of all injuries, regardless of severity. Contractor needs to coordinate record information and details of an incident using the site Incident Report form.

2.2 Incident Reporting

- Each incident will be reviewed immediately to determine if it had the potential to result in a fatality. A Potentially Fatal Event (PFE) could be a near miss or property damage with no actual injury. The determination is based on the potential severity not actual severity. After the occurrence of such an event, the contractor shall immediately contact the Freeport-McMoRan site safety department and project manager so they may assist in the investigation. In such instances the event will be investigated with the same rigor as if a fatality had actually occurred. Actions plans will be developed and implemented to prevent re-occurrence. Investigations shall be fully documented and maintained on site for review. FCX views these as opportunities to prevent an actual fatality so reporting is essential.



Contractors Safety Manual Part 1

Section 2.0 Emergency Action and Incident Reporting

2.2 Incident Reporting

- Failure to promptly report a workplace injury, illness or significant event may result in cancellation of the contract.



Contractors Safety Manual Part 1

Section 2.0 Emergency Action and Incident Reporting

2.2.1 Monthly Frequency Report

All contractors shall provide to the Freeport-McMoRan site Safety Department, Project Manager or his/her delegate a monthly safety summary for results occurring on the project, which must include the following:

Contractors Safety Manual Part 1

Section 2.0 Emergency Action and Incident Reporting

2.2.1 Monthly Frequency Report

- Number of lost time/restricted duty injuries
- Number of medical treatment injuries
- Number of occupational illnesses
- Number of first aid injuries
- Number of hours worked by contract personnel (Note: Hours and injuries reported must be specific to the location where contract work is being completed).
- Fire incidents o Vehicle equipment damages o Property damages
- Monthly summary reports will be due no later than the 5th of the following month
- (Note: These reports are to be site-specific, not company-wide data)

Contractors Safety Manual Part 1

5.17.9 Mobile Cranes



Contractors Safety Manual Part 1

5.17.9.1 Operator Qualifications

- Crane operators shall comply with site requirements to operate a crane.
- Crane operators who possess a nationally recognized license or certificate will be required to provide evidence of their training, qualifications and competence prior to arrival on site. In any case, the operator shall have a current, applicable written documentation of training for the category of equipment being operated.

Contractors Safety Manual Part 1

5.17.9.1 Operator Qualifications

- Crane operators shall document a recent physical examination, including a vision test, prior to applying for a project crane operator license. (Note: The D.O.T. Physical forms meet the above requirements and may be used as a guideline.)



Contractors Safety Manual Part 1

5.17.9.1 Operator Qualifications

- In order to receive a project crane operator license, an applicant must be able to pass a written test that includes, at minimum, the following elements:
 - Crane Set-up
 - Reading Load Charts
 - Calculating capacities at a given radius
 - Calculating deductions for rigging, block, jib, etc.
 - Proper Crane Operation
 - Rigging and Rigging Inspection
 - Evaluating Site Conditions
 - Pre-Operations Inspection

Contractors Safety Manual Part 1

5.17.9.1 Operator Qualifications

- Potential candidates for crane operator shall be able to pass a “hands on” test that includes the following skills:
 - Perform Pre-Operation inspection
 - Set crane up for a lift
 - Inspect rigging
 - Operate crane and show ability to follow hand signals (i.e., swing boom, place hook, etc.)
 - Ability to read load chart and calculate load
 - Perform a test lift
 - The “hands on” test shall be documented and results made available upon request.

Contractors Safety Manual Part 1

5.17.9.2 Operating Procedures

- The operator shall not engage in any practice that may divert his or her attention while engaged in crane operations, and will never leave the controls when there is a load on the hook.
- The operator shall not operate the crane if physically or mentally unfit, or if taking prescription drugs which may affect judgment.
- The operator shall not respond to any signal that is unclear or is given by anyone other than the appointed signal person (with the exception of a stop signal given by anyone).

Contractors Safety Manual Part 1

5.17.9.2 Operating Procedures

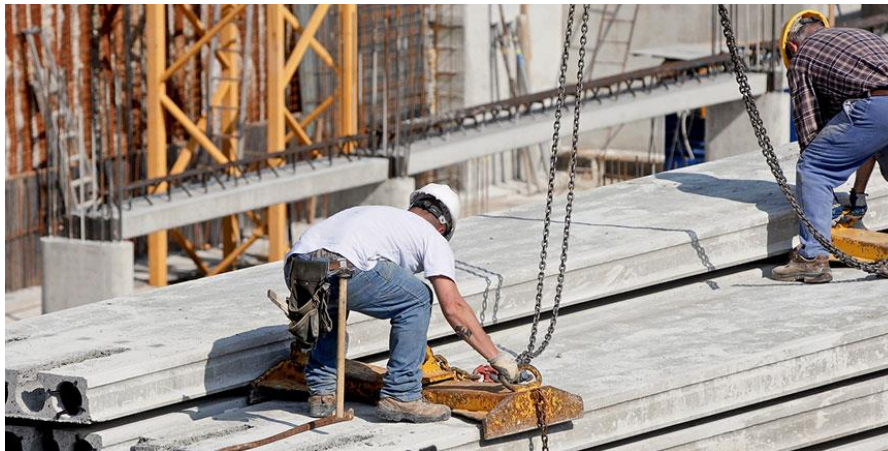
- The operator shall have final responsibility and control over the crane operations. When there is any doubt as to safety, the operator shall have the authority to stop and refuse to handle the loads until safety has been assured. **Any manager, supervisor or person attempting to bypass the crane operator's authority on this issue will be removed immediately from the site.**



Contractors Safety Manual Part 1

5.17.9.2 Operating Procedures

- The load shall be attached to the hook by means of slings or other approved devices, and **no open hooks shall be used. Hooks shall have functional safety latches.**
- A shackle shall be used to retain two or more choker eyes in the hook where the hook is not so designed to attach multiple rigging components.



Contractors Safety Manual Part 1

5.17.9.2 Operating Procedures

- Hooks shall not be changed, defaced or deformed in any manner. Hooks that have been exposed to excessive heat such as welding, burning, grinding, etc. will not be allowed on-site.
- The operator shall position the hook over the load in a manner to prevent load swing.
- **The operator shall** determine that the rope is properly seated in the drum and in the sheaves; the load line is not kinked; and multiple part lines are not twisted around each other.

Contractors Safety Manual Part 1

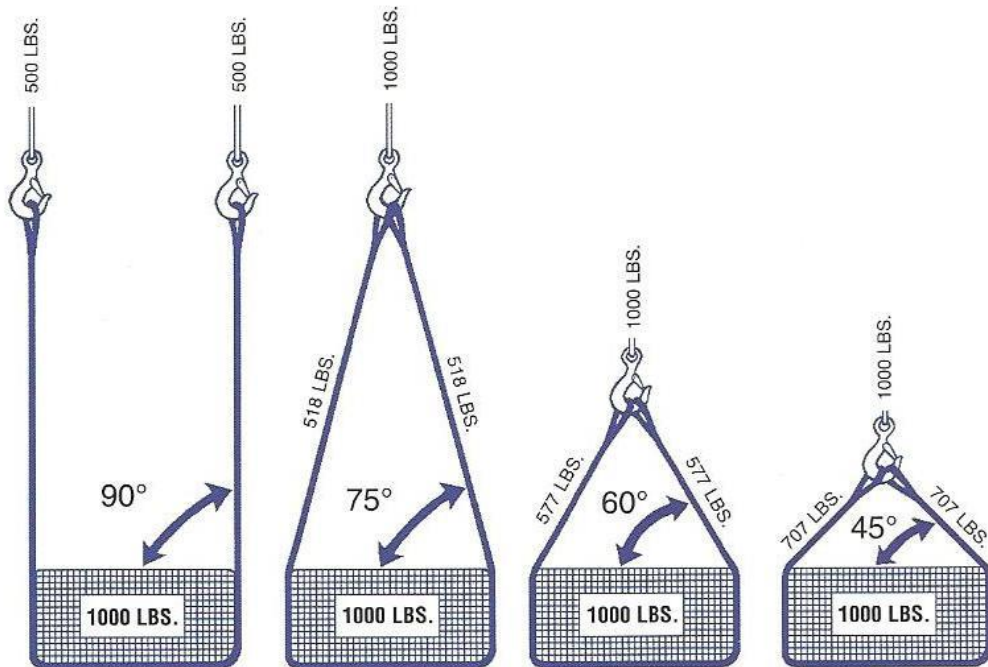
5.17.9.2 Operating Procedures

- Shake out hooks will be used only for shaking out materials.
- During hoisting, the operator shall not suddenly accelerate/decelerate a moving load; allow the load to contact any obstructions; swing loads over personnel; or allow side loading or load dragging.
- All load rigging equipment shall be appropriately rated. Ratings shall be displayed on the device.

Contractors Safety Manual Part 1

5.17.9.3 Rigging Requirements

- Rigging will only be completed by competent individuals who have received training on proper rigging techniques. Evidence of such training must remain with riggers during working hours.



Contractors Safety Manual Part 1

5.17.9.3 Rigging Requirements

- All rigging equipment shall be inspected prior to each use. Damaged or defective slings shall be immediately removed from service and destroyed.
- “Shop-made” grabs, hooks, clamps or other lifting devices are prohibited.
- All rigging equipment shall have a safety factor of five.

Contractors Safety Manual Part 1

5.17.9.4 Safe Operating Practices

- Slings shall not be shortened by knots, bolts or other makeshift devices.
- Wire rope slings shall be padded or softeners used to protect against damage due to sharp corners.
- Slings used in a basket hitch shall have the loads balanced to prevent slippage.



Contractors Safety Manual Part 1

5.17.9.4 Safe Operating Practices

- Loads handled by slings shall be landed on cribbing or dunnage so that slings will not be pulled from under or crushed by the load.
- Slings subjected to shock loading shall be immediately removed from use and destroyed.

Contractors Safety Manual Part 1

5.17.9.4 Safe Operating Practices

- Tag lines will be used with all lifting operations.
- **Repair to rigging equipment is prohibited.** It shall be removed from service and destroyed or sent to the manufacturer for repair.

Contractors Safety Manual Part 1

5.17.9.5 Inspections and Recordkeeping

- A thorough written inspection of slings, ropes and chains in use shall be made on a regular basis, but not less frequently than six months.
- A record of inspections shall be maintained.



5.17.9.6 Work Platforms Suspended from Cranes

A permit is required prior to using a crane for lifting personnel in a suspended platform. The platform must be certified by a professional engineer. The permit will be issued by the contractor when it is determined that the use of the platform is the only feasible method of accomplishing the task. The safety checklist included with the permit will be utilized prior to hoisting personnel. A pre-lift meeting must take place prior to the lift and be documented. Fall protection must be in place according to regulatory and FCX Working at Heights Policy. Personnel and materials cannot be lifted together.

2018 Meeting Schedule

2018 Contractor Monthly Safety Meeting Schedule
Freeport Morenci

| Meeting Dates | 1/8/2018 | 2/12/2018 | 3/12/2018 | 4/10/2018 | 5/1/2018 | 6/12/2018 | 7/10/2018 | 8/14/2018 | 9/11/2018 | 10/9/2018 | 11/13/2018 | 12/11/2018 |
|---------------|-------------------|-------------------|-------------------|-------------------|-------------------|-------------------|-------------------|-------------------|-------------------|-------------------|-------------------|-------------------|
| Time | 10am to 11am | 10am to 11am | 10am to 11am | 10am to 11am | 10am to 11am | 10am to 11am | 10am to 11am | 10am to 11am | 10am to 11am | 10am to 11am | 10am to 11am | 10am to 11am |
| Place | Morenci Club Hall | Morenci Club Hall | Morenci Club Hall | Morenci Club Hall | Morenci Club Hall | Morenci Club Hall | Morenci Club Hall | Morenci Club Hall | Morenci Club Hall | Morenci Club Hall | Morenci Club Hall | Morenci Club Hall |