

CLIMAX OPERATIONS

HAZARD RECOGNITION

The following rules and guidelines apply during your visit at Climax operations. For your personal safety and the safety of others, observe these rules and guidelines at all times.

CONFIDENTIALITY AGREEMENT

While on Climax property, use of photographic or video equipment or similar technology is prohibited without the express prior written consent of Freeport-McMoRan. In consideration for the granting of permission to enter the Climax property, I hereby agree all knowledge and information acquired or otherwise obtained by me relating to the site's operations may not be used by me for any purpose or divulged to any person other than authorized representatives of Climax operations without the express prior written consent of Freeport-McMoRan.

RELEASE AND INDEMNITY

On behalf of myself, my parent and subsidiary corporations, in consideration for the granting of permission to enter upon the property owned by Freeport-McMoRan Climax Operations, I release and agree to hold harmless and indemnify Freeport-McMoRan, its affiliates, officers, employees, and agents, from and against all claims and all injuries, losses, and damages to any person or property arising out of entry onto the company's operations from the date of this release.

All visitors, employees and contractors have the ability, are EXPECTED to STOP WORK, and report any unsafe behaviors.

HAZARD RECOGNITION AND AVOIDANCE

- Observe all No Smoking areas.
- All vehicles and equipment must be inspected before operated or used on site and pre-trip inspections must be completed daily before use.
- The operator and passengers must wear Seatbelts while vehicles are in motion.
- Horn Signals-One honk before starting engine. Two honks for forward driving, three honks before backing.
- All vehicles operating on any roadway at Climax must be equipped with a lighted buggy whip 12 feet in height.
- Chains are required when conditions require. Be prepared September through May for snow and ice on roads.
- Steep, wet, muddy, rough, narrow curves and slippery roads can be encountered year round.
- Authorization is required to drive on roads in the Open Pit along with Pit Driving Certification. Left-hand traffic is used throughout the Mine/Open Pit area.
- A two-way radio with the "Pit Ops" channel is required to drive in Open Pit.
- Yield to all Heavy Equipment on site roads and use positive communication when interacting with equipment. On Site Roads use "Site Travel" radio channel.
- Maximum speed is 25 mph on site.
- Observe traffic regulatory signs and rules at all times.
- All vehicles must be chocked and have the park brake set when parked
- Be alert for slip, trip and fall hazards. Walk slower, use handrails, shovel and spread snowmelt or traction material during winter conditions.
- Stay clear of all "blast zones" and observe radio silence during blasting countdown tones.

ENVIRONMENTAL

- Know the signs and prevent cold stress, frostbite and hyperthermia.
- Prevent dehydration winter or summer seasons.
- Climax is located at 11,300 feet. Be Alert for signs of altitude related illness. If signs are present, stop work and seek assistance immediately.
- Climax Mine is equipped with a lightning detection system. Be familiar with the different color alerts, announcements, and storm distances and stop work when appropriate.
 - **Yellow** –30 mile radius
 - **Orange**–20 mile radius
 - **Red**– 10 mile radius or visual
- Climax mine uses an avalanche hazard rating and notification system at each gate. Be familiar with current rating, restrictions and restricted areas.
- Proper disposal of all food, trash, liquids or recyclables.
- All chemicals must be approved before brought on site
- Report all spills immediately to your supervisor, Climax Security or Environmental.

BASIC PERSONAL PROTECTIVE EQUIPMENT – PPE

- Hard hat
- Reflective and hi-visibility vest/jacket/outer layer
- Safety glasses with side shields
- Hearing protection
- Safety toe boots
- Long pants that extend over the top of boots
- Additional PPE requirements may be required depending on area.

SAFETY SHOWERS

Safety showers and eyewash stations are located throughout the Climax operations. In the event you are exposed to a hazardous chemical or substance, call a Mayday and proceed to the nearest safety shower and flush with water immediately for a minimum of 15 minutes, then seek medical attention.

ADDITIONAL

- Report all employee injuries, property damages immediately to your supervisor.
- All electrical cords must be in good working conditions and ground checked before use.
- Appropriate training and certifications to operate equipment or complete certain tasks.
- Use Critical Controls for lifting operations. Never enter potential drop zone.
- Unauthorized possession of firearms is prohibited in work areas.

PHONE NUMBERS

- **On Site Emergency: 719-486-7583**
- Emergency: 911
- Main Gate for Non-Emergency: 719-486-7583

Work Restriction	Avalanche Hazard Rating Operational Impact
Stage 1	Vehicle travel: No restrictions. Plowing: No restrictions Out of vehicle work: Proper PPE and spotters required.
Stage 2	Vehicle travel: Spotters required or supervisor / security notification required while traveling through the hazard area. Notify contact when safely through the restricted area. No stopping allowed. Plowing: Spotter required while plowing in restricted area. Out of vehicle work: Critical work only. Requires spotter and proper PPE.
Stage 3	Vehicle Travel: Spotters required. Plowing: Spotters required. Out of vehicle work: Highly critical work only. Requires proper PPE and Mine Rescue standby in immediate area.

FATAL RISKS PRESENT AT CLIMAX OPERATIONS

These symbols indicate a Fatal Risk may be present in the area. Please consult with local leadership before proceeding to ensure all Critical Controls are in place to prevent any serious incidents from occurring.



Blasting



Confined Spaces



Contact with Molten Material



Drowning



Entanglement and Crushing



Exposure to Electrical Hazards



Fall from Heights



Falling Objects



Fire



Ground Failure



Hazardous Substance – Acute Exposure



Hazardous Substance – Chronic Exposure



Interaction with Aircraft



Lifting Operations



Uncontrolled Release of Energy






Vehicle Impact on Person

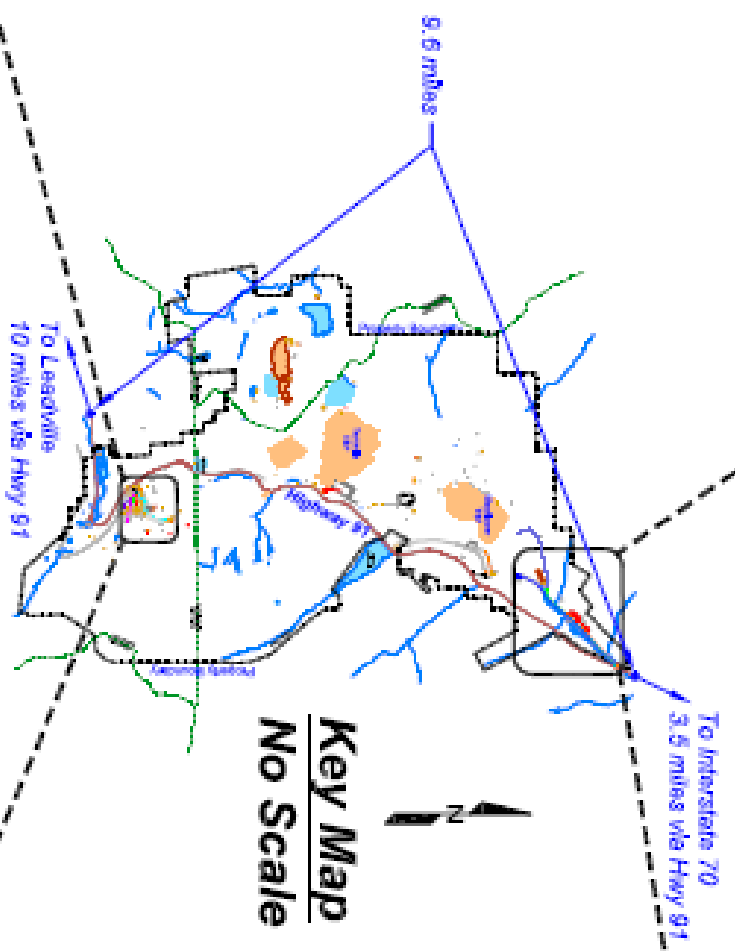
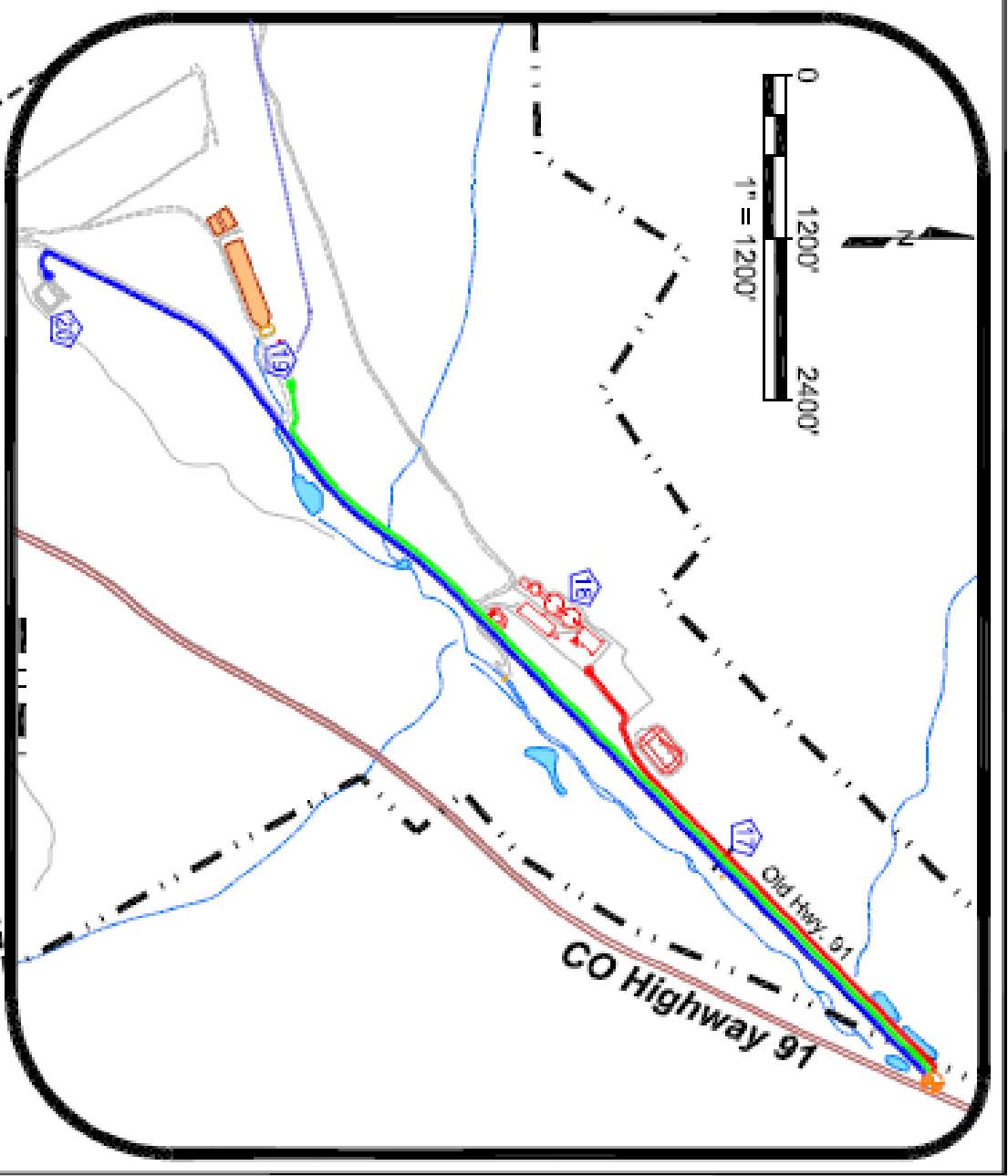


Vehicle Collision or Rollover


EMERGENCY/Mayday Activation

PUSH THE ORANGE RADIO MAYDAY / P4 BUTTON OR Announce "MAYDAY, MAYDAY, MAYDAY" on Any Radio Channel OR CALL 719-486-7583

- Route Legend** (North Area)
- PDWTP Complex 
 - Mayflower Tunnel Laydown 
 - Excel Mayflower Substation 



- Facility Legend**
-  Gate House
 -  Scale House
 -  Mill / Admin Bldg
 -  Admin Parking Lot
 -  3-Mill
 -  3-Mill Parking
 -  Moly Loading Area
 -  Mill Warehouse (Doors & Staging)
 -  Mine Maintenance Shop (Truck Shop)
 -  Mine/Phillipson Warehouse
 -  Primary Crusher
 -  Secondary Crusher
 - Crusher Dry
 - Southwest Energy Shop
 - Coarse Ore Storage Dome
 - North Gate
 - PDWTP
 - Mayflower Tunnel & Laydown Yard
 - Excel Mayflower Substation

- Route Legend** (Camp Area)
- Mill, Warehouse 
 - Administration, Parking 
 - Moly Packing 
 - Phillipson / Mine Warehouse 
 - 3-Mill 
 - Southwest Energy 
 - North 40 Laydown Yard

