

# PFE LESSONS LEARNED: Employee Falls from Fixed Ladder

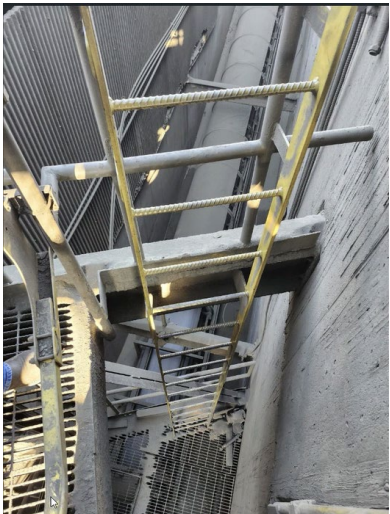


Fall from Height

## Incident Overview

Miami, July 10, 2024

An employee was climbing a fixed ladder after cleaning hoppers. Approximately 12 feet up from the landing, the employee lost their grip and fell to the grating at the base of the ladder. The employee landed on their left arm and struck their head.



## Causal Factors

- Chute design caused material buildup, requiring manual removal by employees.
- Employee did not maintain a firm grip on ladder rails or rungs.

## Site Specific Actions



- **Engineering** – Redesign fixed ladder to a stairway or ramp for easier chute access.



- **Engineering** – New chutes to be installed with an improved design to minimize material buildup. This will reduce the need for employees to climb and descend ladders to clean the chute.



Fall from Height

## Incident Overview

Miami, July 10, 2024

An employee was climbing a fixed ladder after cleaning hoppers. Approximately 12 feet up from the landing, the employee lost their grip and fell to the grating at the base of the ladder. The employee landed on their left arm and struck their head.



### Smelter Employees

- Maintain three points of contact when climbing up or down ladders.
- If you are exposed to fall hazards, utilize the appropriate controls.



### Smelter Leadership

- Avoid unnecessary exposure to hazards. If there is a situation that creates exposure to unsafe conditions, stop work and collaborate with your team to mitigate the hazards.
- Make routine visits to work areas to observe work activities and check for safe working habits. Verify standard operating procedures are followed, correct PPE is worn, and teams have the right tools to perform work safely.




### All of Us

- Maintain three points of contact when climbing up or down ladders.
- If exposed to fall hazards, utilize the appropriate controls.
- Do not ignore hazards. Stop work and address unsafe conditions immediately.

# Potential Fatal Event: Employee Falls from Fixed Ladder

Preliminary Incident Details	
Operation	Miami
Date / Time	July 10, 2024 / 4:55 p.m.
Event Type	Injury – Medical Treatment
Summary	An employee was climbing a fixed ladder after cleaning hoppers. Approximately 12 feet up from the landing, the employee lost their grip and fell to the grating at the base of the ladder. The employee landed on their left arm and struck their head.
Risk Category	Monitor – Significant (3) Possible (2)
Findings / Missing Controls	<ul style="list-style-type: none"><li>Fall protection was not required</li></ul>
Applicable Policies / Procedures	<ul style="list-style-type: none"><li><a href="#">FCX-HS02 Working at Heights</a></li></ul>
Employee Condition	<ul style="list-style-type: none"><li>Employee broke thumb</li></ul>
Contact	<ul style="list-style-type: none"><li>Justin Taylor, Manager-Health and Safety</li></ul>

Photos / Links



Location of ladder and fall.