

# FCX Monthly Safety Content

The following slides have been provided to aid in compiling content for monthly Health & Safety meetings, tailgates, etc. with FCX employees and contractors.

- Please keep in mind - some of this information is preliminary and may be pending complete investigations.

## Best Practices

- Be familiar with content prior to presenting
- Hide/Unhide incidents that are relevant to your team
- Interact with your audience, relating information to your specific work
- Update dashboards to share meaningful data ([Incident Summary - Power BI](#), [FRM - Power BI](#)). Contact your local H&S staff for site-specific dashboards or external access.

# THE POWER OF COPPER

## FCX Safety Updates

December 2023

(Incidents and Communications from November 2023)

FCX  
LISTED  
NYSE



ICMM  
Member

**FREEPORT**  
*FOREMOST IN COPPER*  
fcx.com

# THE POWER OF COPPER

## FCX Safety Incidents, Successes, & Alerts

November 2023

FCX  
LISTED  
NYSE



ICMM  
Member

**FREEPORT**  
*FOREMOST IN COPPER*

fcx.com



# High Risk Event: Drill Contact with Lube Truck

Incident Details	
Operation	Morenci
Date / Time	October 27, 2023 / 1 p.m.
Type	Property Damage
Summary	A mechanic in a lube truck approached a drill that was supposed to be down for protec. The mechanic parked 15-20 feet behind the drill to wait for it to finish a hole. The driller lifted a drill bit and started to back up. The mechanic was standing 20-30 feet from the cab side and tried to get the driller's attention but was neither seen nor heard. The mechanic moved to the rear of the drill and hit the emergency stop to keep it from striking the truck, but contact was still made.
Fatal Risk	Vehicle Impact on Person
Risk Category	Monitor
Pre / Post Rating	Significant (3) Possible (2) <b>NOT A PFE</b>
Absent / Insufficient Controls	<ul style="list-style-type: none"> <li>Lack of positive communication with drill operator</li> </ul>
Applicable Policies / Procedures	<ul style="list-style-type: none"> <li>FCX-23 Heavy Equipment Interaction</li> </ul>
Employee Condition	No Injury
Contact	Keith Barnett, Superintendent-Shovel and Drill



Photos / Links



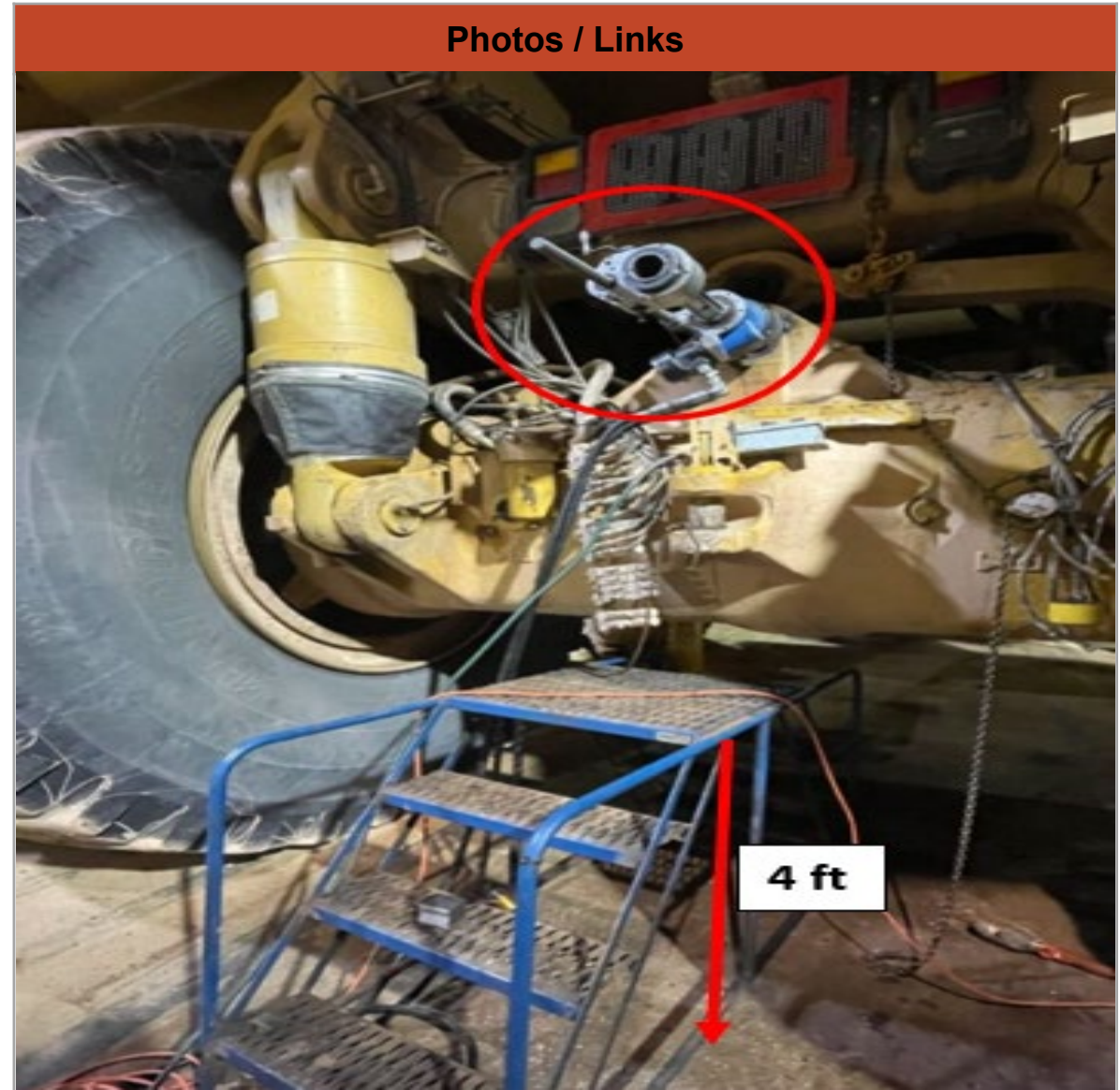


# High Risk Event: Fall from Ladder Platform

## Incident Details

Operation	Morenci
Date / Time	November 2, 2023 / 10:40 p.m.
Type	Injury
Summary	An employee fell off a 4-foot ladder platform while machine boring behind a haul truck. The employee sustained a head injury.
Fatal Risk	Fall from Heights
Risk Category	Monitor
Pre / Post Rating	Significant (3) Possible (2) <b>NOT A PFE</b>
Absent / Insufficient Controls	<ul style="list-style-type: none"><li>• Failure to use correct working platform for the specific task</li></ul>
Applicable Policies / Procedures	<ul style="list-style-type: none"><li>• Working at Heights Policy</li></ul>
Employee Condition	After the fall, the employee was unconscious for about a minute, then came too but was not fully coherent. The employee was transported to the local health clinic and later to the regional medical center for further care. The employee sustained a bruise to the back of the head.
Contact	Willie Biggs, Superintendent-Mine Maintenance

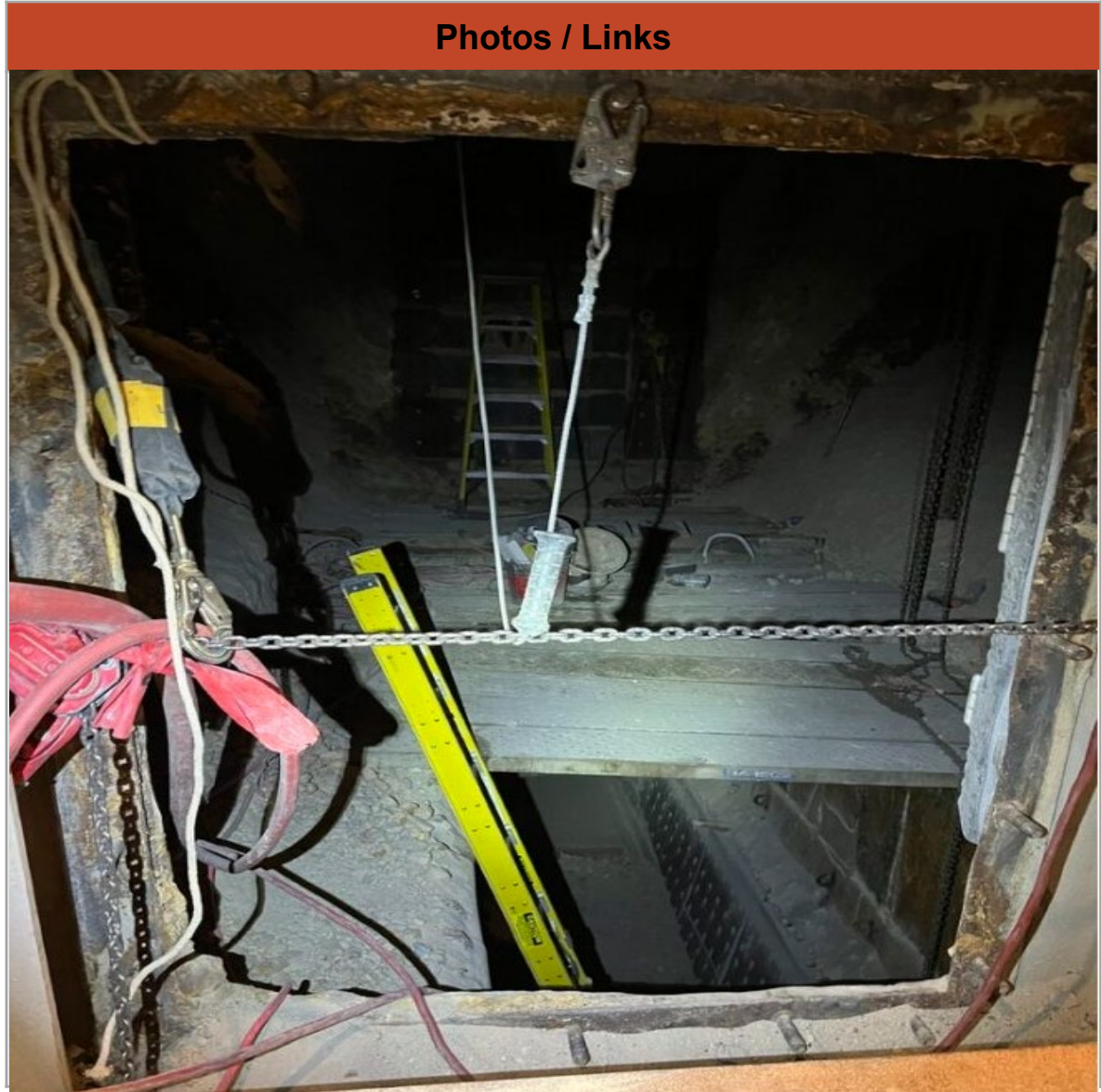
## Photos / Links





# High Risk Event: Liner Fell Off Wall

Incident Details	
Operation	Morenci
Date / Time	November 8, 2023 / 10:00 p.m.
Type	Near Miss
Summary	Contract were working in the 8a and 8b feeders. The employee above was on an 8-foot A frame ladder that was leaning on the wall and employee was tied off cutting the liner with a grinder. As the employee was cutting the liner, it fell off the wall towards them and deflected off their hard hat, face shield and left hand of the employee. The ladder tipped back, causing the employee to fall and their harness to catch them. The liner fell through a small opening to the lower level ~10ft below where the other employee was working on the opposite side of the bin approximately 20ft away.
Fatal Risk	Fall from Heights, Falling Objects
Risk Category	Monitor
Pre / Post Rating	Significant (3) Possible (2) <b>NOT A PFE</b>
Absent / Insufficient Controls	<ul style="list-style-type: none"><li>Scaffolding-Ladder inappropriate due to the nature of the work</li></ul>
Applicable Policies / Procedures	<ul style="list-style-type: none"><li>Working at Heights Policy FCX-HS02</li></ul>
Employee Condition	No Injury
Contact	Chris Seick-Manager Metcalf Mill







# High Risk Event: Contractor's Arms Were Pinned Between Steel Pipes

## Incident Details

Operation	Bagdad
Date / Time	November 9, 2023 / 1:00 p.m.
Type	Injury
Summary	Employee was fitting connection from the intake pipe to new intake manifold. The pipe was put in place and the flange was adjusted. They moved the pipe away with the crane and tele-handler and rested it on pipe stands. The second operator inadvertently released the park brake. The original operator then jumped into the tele-handler to step on the brake. The tele-handler had rolled back several feet into the berm, pulling the pipe into the welder performing the pipe fitting. The welder was grinding on intake pipe and connector's flange impacted their hands.
Fatal Risk	Uncontrolled Release of Energy
Risk Category	Monitor
Pre / Post Rating	Significant (3) Possible (2) <b>NOT A PFE</b>
Absent / Insufficient Controls	<ul style="list-style-type: none"> <li>Employee in the forklift dismantled without setting the suspended load on the ground</li> </ul>
Applicable Policies / Procedures	<ul style="list-style-type: none"> <li>COHE Policy/FCX Contractors H&amp;S &amp; Environmental Manual</li> </ul>
Employee Condition	No Injury
Contact	Denise Frankum, Health and Safety

## Photos / Links



# THE POWER OF COPPER

## PFE Events

November 2023

FCX  
LISTED  
NYSE



ICMM  
Member

**FREEPORT**  
*FOREMOST IN COPPER*

[fcx.com](http://fcx.com)



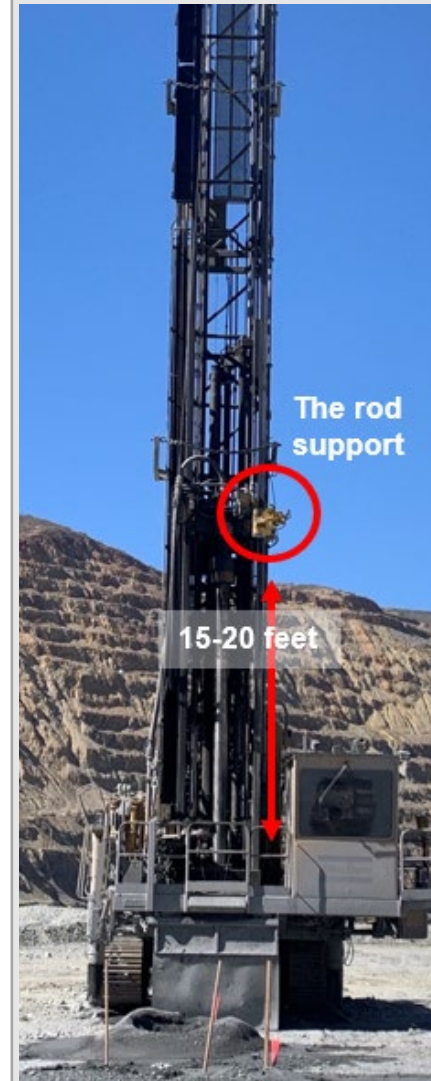


# Potential Fatal Event: Falling Rod Support on Drill

## Preliminary Incident Details

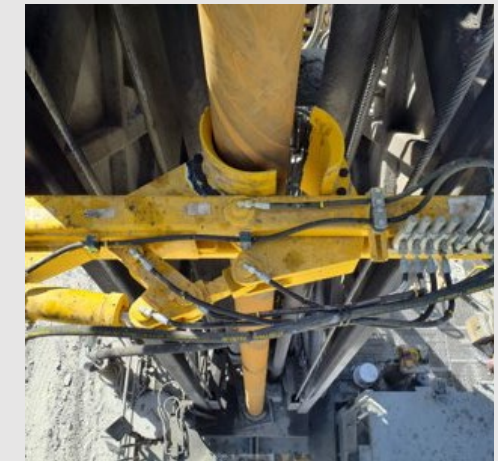
<b>Operation</b>	Sierrita
<b>Date / Time</b>	October 21, 2023 / 3:20 a.m.
<b>Type</b>	Property Damage
<b>Summary</b>	A drill operator was in position to start a new hole and stepped out of the cab onto the platform. As the employee was looking away, the rod support mechanism – estimated to weigh approximately 500 pounds – fell 15 to 20 feet and landed on the deck about four feet away. The operator was struck on the shoulder with a hydraulic hose attached to the rod support.
<b>Fatal Risk</b>	Falling Objects
<b>Risk Category</b>	Actionable
<b>Pre / Post Rating</b>	Significant (3) Likely (3)
<b>Findings / Missing Controls</b>	<ul style="list-style-type: none"><li>• Operator competency</li><li>• Safety cable failed</li></ul>
<b>Applicable Policies / Procedures</b>	<ul style="list-style-type: none"><li>• Drill SOP</li></ul>
<b>Employee Condition</b>	No Injury
<b>Contact</b>	Allen Bruce Kinney, Superintendent-Mine Operations

## Photos / Links

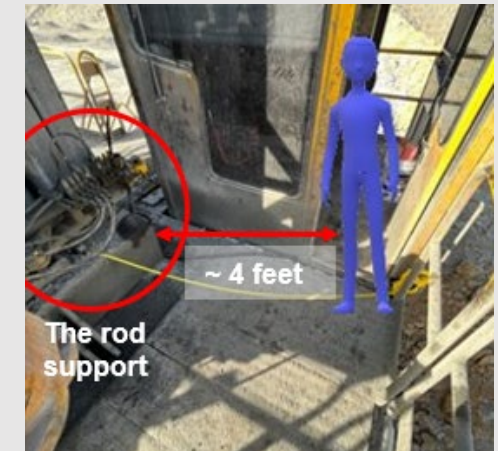


The rod support

15-20 feet



The rod support in place around the drill shaft.



The rod support

~ 4 feet

The employee's position when the rod support fell.



# Potential Fatal Event: Contractor Falls from Shovel Ladder

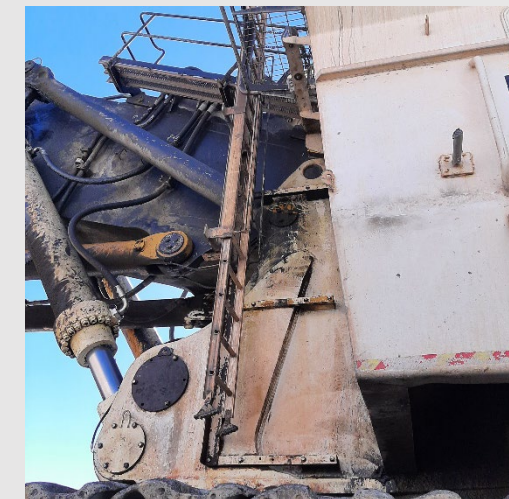
## Preliminary Incident Details

<b>Operation</b>	Climax
<b>Date / Time</b>	October 25, 2023 / 11:30 a.m.
<b>Type</b>	Injury
<b>Summary</b>	<p>A contractor employee used the emergency egress ladder to access the track below the operator's cab to clean the front of the shovel. After cleaning, the employee began to ascend the ladder, which had retracted. While part way up the ladder, it descended, causing the contractor to fall an estimated 5 to 10 feet below onto the tracks.</p>
<b>Fatal Risk</b>	Fall From Heights
<b>Risk Category</b>	Monitor
<b>Pre / Post Rating</b>	Significant (3) Possible (2)
<b>Findings / Missing Controls</b>	<ul style="list-style-type: none"><li>• Contractor fall protection was not connected</li><li>• Onsite personnel lift was in use on the other side, so not used for this task</li><li>• Job walk was not performed prior to starting task</li></ul>
<b>Applicable Policies / Procedures</b>	<ul style="list-style-type: none"><li>• <a href="#">Working at Heights</a></li></ul>
<b>Employee Condition</b>	Contractor is recovering from a fractured patella
<b>Contact</b>	Greg Gerloff, Senior Supervisor-Industrial Hygiene

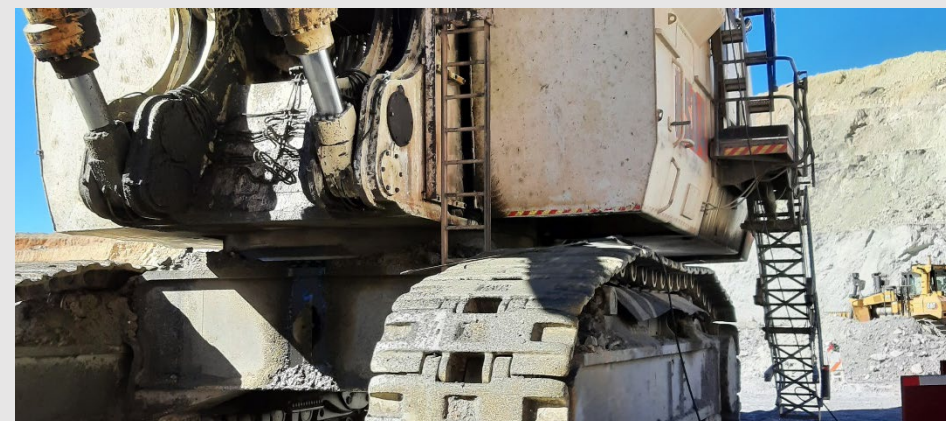
## Photos / Links



*Ladder Extended*



*Ladder Retracted*



*Scene Overview*





# Potential Fatal Event: Fall from Heights

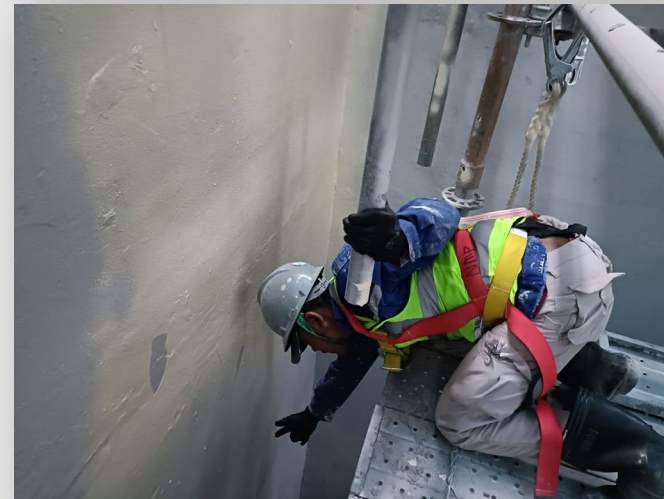
## Preliminary Incident Details

<b>Operation</b>	Manyar Smelter – Desalination Plant
<b>Date / Time</b>	October 31, 2024 / 3:30 p.m.
<b>Type</b>	Injury
<b>Summary</b>	A subcontractor employee was applying coating on a tank from scaffolding and was reminded to tie off by a Health and Safety specialist. While attempting to stand up to tie off, the employee lost balance and fell through the gap about 4 meters (13 feet) to the ground.
<b>Fatal Risk</b>	Fall from Heights
<b>Risk Category</b>	Monitor
<b>Risk Rating</b>	Significant (3) Possible (2)
<b>Findings / Missing Controls</b>	<ul style="list-style-type: none"><li>Employee was not tied off</li></ul>
<b>Applicable Policies / Procedures</b>	<ul style="list-style-type: none"><li><a href="#">Working at Heights policy</a></li><li>Work procedures and training</li></ul>
<b>Employee Condition</b>	The employee received a laceration requiring eight stitches above the right eye and was cleared to return to work.
<b>Contact</b>	Zach Scrivner, Manager-Corporate Project Engineering Safety

## Photos / Links



*The scaffolding where the worker fell.*



*Reenactment – The worker fell about four meters to the ground.*



# THE POWER OF COPPER

## Agency Shares

November 2023

FCX  
LISTED  
NYSE



ICMM  
Member

**FREEPORT**  
*FOREMOST IN COPPER*

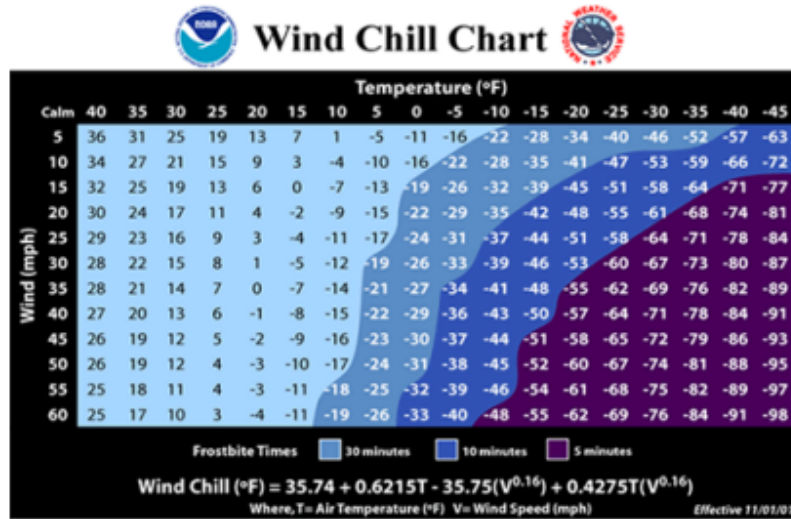
fcx.com

# MSHA Safety Alert – Safety in Cold Weather

Cold weather can cause cold stress, which can lead to hypothermia, frostbite, and other severe injuries, and illnesses.

## Best Practices:

- Monitor your physical condition and that of your coworkers.
- Wear appropriate clothing.
- Wear clothing that allows a full range of motion necessary for the tasks of the work.
- Move into warm locations during breaks.
- Include chemical hot packs in your first aid kit.
- Avoid touching cold metal surfaces with bare skin.



## Best Practices:

- Maintenance of fuel-burning equipment and vehicles is crucial. Vehicle exhaust systems need to be regularly inspected for leaks or other damage.
- Monitors and audible alarm systems should be in place wherever CO is a potential hazard. Use portable CO detectors as necessary.
- Properly ventilate work areas. The ventilation system should be designed and maintained to remove contaminants from the mine atmosphere.
- Maintain travelways and keep them free of ice and debris.

In addition, some portable heaters can emit deadly carbon monoxide (CO). CO is odorless and colorless and can accumulate in confined spaces and enclosed areas such as the cabs of vehicles, work trailers, and unventilated areas. Exposure to 200 parts per million of CO for 15 minutes can cause disorientation, unconsciousness and eventual death.

# MSHA Fatality Alert – November 13, 2023

**MINE FATALITY** – On November 13, 2023, a rotating drill steel of a roof bolting machine entangled a miner, causing fatal injuries.



### Best Practices

- Always follow manufacturer recommendations when conducting maintenance on equipment, including:
  - Turn off or de-energize the machine.
  - Secure the equipment against hazardous motion.
- Never touch or hold the drill steel, wrench, or bolt while it is rotating.
- Do not wear loose-fitting or bulky clothing when working around any machinery with rotating parts.

[PDF LINK](#)

This is the 36<sup>th</sup> fatality reported in 2023, and the 14th classified as “Machinery.”