

FCX Monthly Safety Content

The following slides have been provided to aid in compiling content for monthly Health & Safety meetings, tailgates, etc. with FCX employees and contractors.

- Please keep in mind - some of this information is preliminary and may be pending complete investigations.

Best Practices

- Be familiar with content prior to presenting
- Hide/Unhide incidents that are relevant to your team
- Interact with your audience, relating information to your specific work
- Update dashboards to share meaningful data ([Incident Summary - Power BI](#), [FRM - Power BI](#)). Contact your local H&S staff for site-specific dashboards or external access.

THE POWER OF COPPER

FCX Safety Updates

January 2024

(Incidents and Communications from December 2023)

FCX
LISTED
NYSE



ICMM
Member

FREEPORT
FOREMOST IN COPPER

fcx.com

THE POWER OF COPPER

FCX Safety Incidents, Successes, & Alerts

December 2023

FCX
LISTED
NYSE



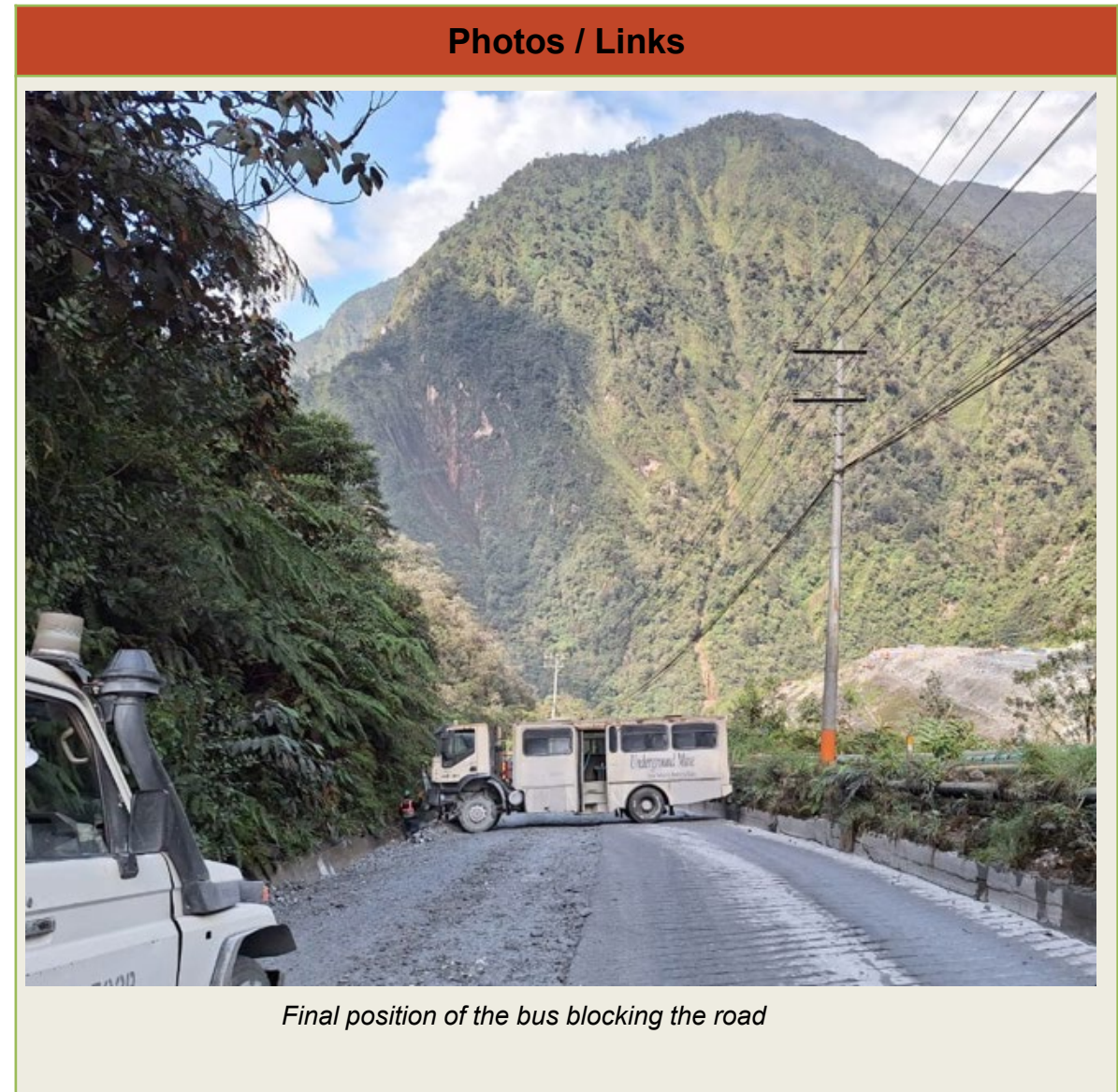
ICMM
Member

FREEPORT
FOREMOST IN COPPER
fcx.com



High Risk Event: PTFI Bus Near Miss

Incident Details	
Operation	PT Freeport Indonesia
Date / Time	December 1, 2023 / 10:15 a.m.
Type	Near Miss
Summary	A bus traveling down MP74 about 100 meters (330 feet) from Davey Tunnel moved onto a section of concrete road to allow an excavator traveling uphill to be on a concrete-free section. The bus tires slipped on the slick concrete, causing the bus to skid and block the access road.
Fatal Risk	Vehicle Collision or Rollover
Risk Category	Actionable
Pre / Post Rating	Catastrophic (4) Possible (2)
Absent / Insufficient Controls	<ul style="list-style-type: none">operator not using the proper gear when going down the road incline.
Applicable Policies / Procedures	<ul style="list-style-type: none">Low speedsBermsGPS Tracking SystemsOperational Safety Mobile Assets.
Employee Condition	N/A
Contact	Andri Abdullah, UG Health and Safety Manager



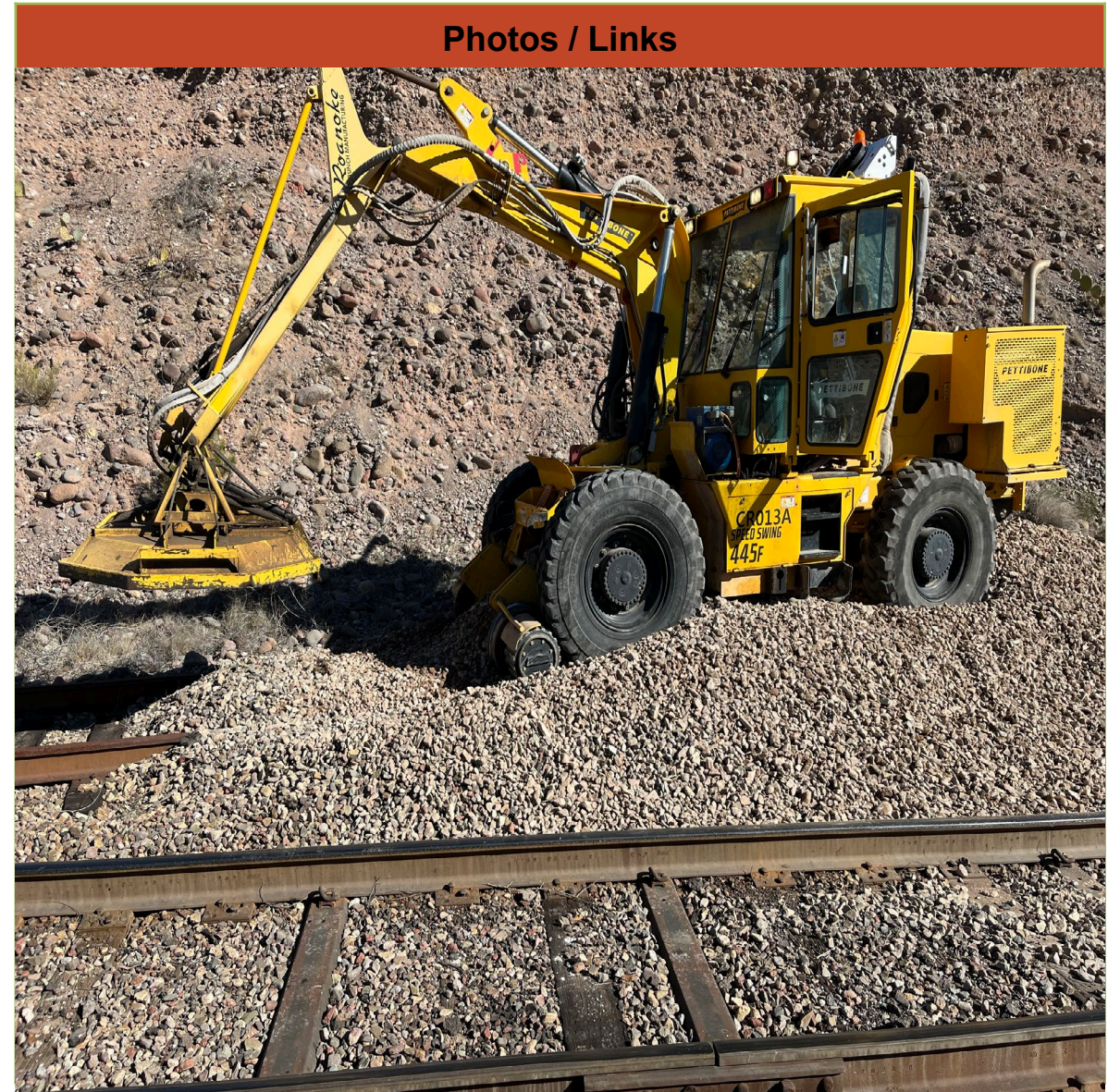


High Risk Event: Morenci Railroad Near Miss

Incident Details

Operation	FM Americas: Morenci
Date / Time	December 28,2023 / 9:00 am
Type	Near Miss
Summary	<p>A Railroad employee was using a rail mounted piece of equipment (Petty Bone) to trim vegetation along the Railroad when he stopped at the Columbine Gate crossing to dismount the rail. He stopped and was getting ready to disengage the wheels when he felt the Petty Bone rolling away. He couldn't stop it with the brake system, so he dismounted the equipment and the equipment continued down the track approximately 1.76 miles coming to a stop at the derailer.</p>
Fatal Risk	Railroad Collision
Risk Category	Actionable
Pre / Post Rating	Significant (3), Likely (3)
Absent / Insufficient Controls	
Applicable Policies / Procedures	
Employee Condition	N/A
Contact	Rassie Ras, Health & Safety Manager

Photos / Links



THE POWER OF COPPER

PFE Events

December 2023

FCX
LISTED
NYSE



ICMM
Member

FREEPORT
FOREMOST IN COPPER

fcx.com

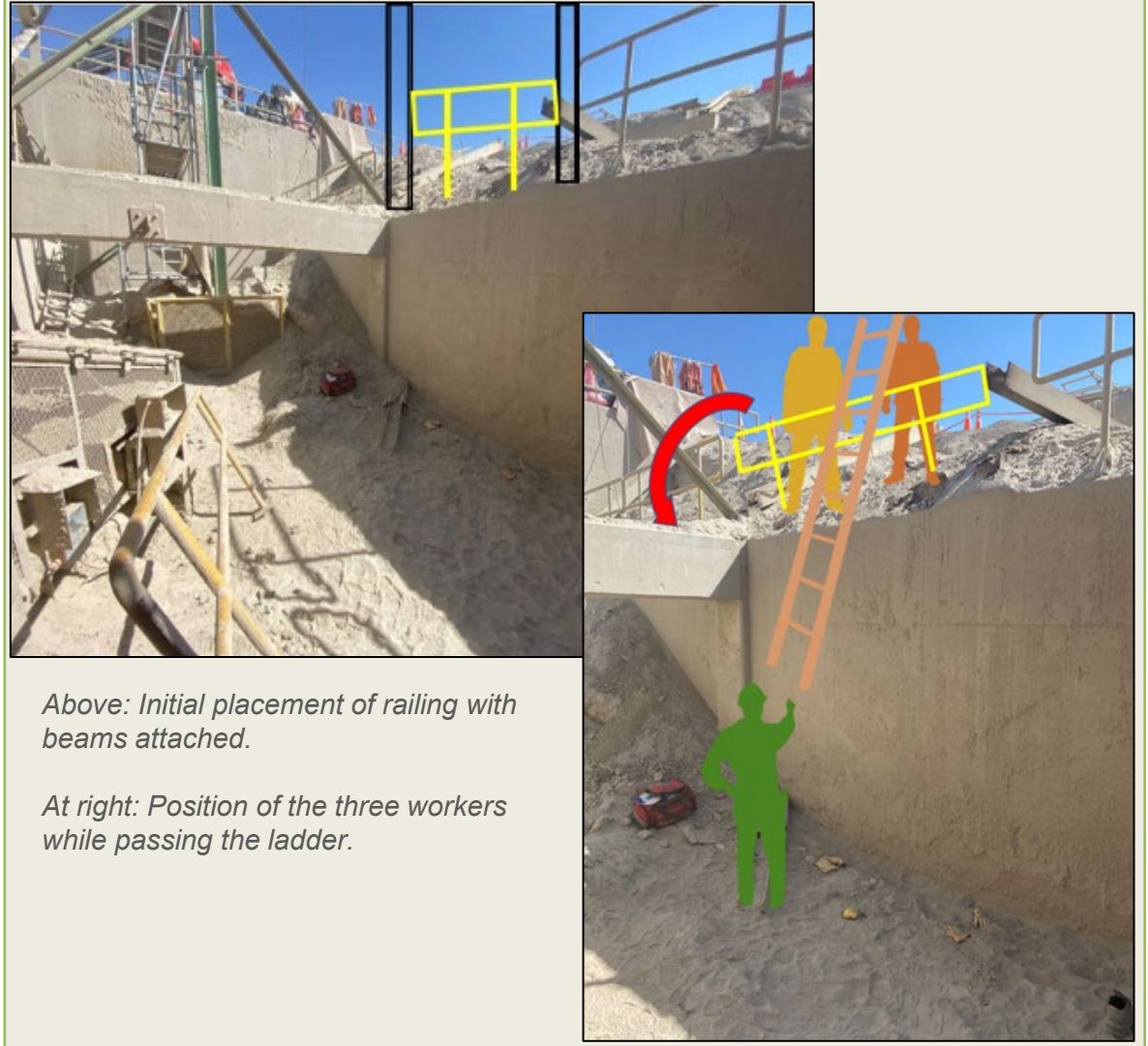


Potential Fatal Event: Fall from Heights

Preliminary Incident Details

Operation	Cerro Verde
Date / Time	November 27, 2023 / 2 p.m.
Type	Injury
Summary	Two workers were trying to pass a ladder from a platform to a coworker approximately 3 meters (9 feet) below. They rested the ladder on the railing, which gave way. The two workers and the ladder fell onto the coworker below. Earlier that day, the three workers had cut/removed two beams used to support the railing as part of demolition activities.
Fatal Risk	Fall from Heights
Risk Category	Actionable
Risk Rating	Significant (3) Likely (3)
Findings / Missing Controls	<ul style="list-style-type: none">After removing the primary support structures, no new inspection was conducted to check the integrity of the handrails.
Applicable Policies / Procedures	<ul style="list-style-type: none">Working at Heights Policy / StandardWorkplace inspections
Employee Condition	The three workers sustained several contusions.
Contact	Jorge Chavez Rivera, Mine, Tailings and Water Project Manager

Photos / Links



Above: Initial placement of railing with beams attached.

At right: Position of the three workers while passing the ladder.



Potential Fatal Event: Lifting Operations

Preliminary Incident Details

Operation	Chino
Date / Time	December 1, 2023 / 10:00 am
Type	Property Damage
Summary	A crane was lifting roof panels to be installed on the roof of the mill when a void opened under the left front outrigger, causing the crane to tip forward and hit the building. There were four employees working on the roof installing the roof panels – three were standing about 25 feet away as the load was being flown in and one was guiding the load with a tag line. When the crane tipped forward into the building, the load swung and came within 4-5 feet of hitting the employee holding the tag line.
Fatal Risk	Lifting Operations
Risk Category	Monitor
Pre / Post Rating	Significant (3) Likely (2)
Findings / Missing Controls	<ul style="list-style-type: none">• The drainage system was not identified when setting the crane up.• The drainage system does not show on the prints of the area.
Applicable Policies / Procedures	<ul style="list-style-type: none">• Crane and Rigging Policy• Crane and Rigging Critical Lift TS
Employee Condition	No injuries
Contact	Sean Maddock, Superintendent-Mill Maintenance, Herman Armijo, Senior Supervisor-Health and Safety

Photos / Links



Position of the crane after the event



Location of where the crane hit the roof



Cavity that the outrigger fell into



Damage to the roof



Potential Fatal Event: Runaway Ballast Car

Preliminary Incident Details	
Operation	PT Freeport Indonesia
Date / Time	December 1, 2023 / 1:30 p.m.
Type	Near Miss
Summary	Upon completion of loading the ballast wagon, the rail maintenance team parked the four-wagon set in the trolley shop and decoupled them from the open tray and Zephyr shunting locomotive. A few minutes later the fully loaded ballast wagons, each with 25 tons of material, rolled unattended approximately 190 meters (625 feet) from the trolley shop to a turnout at the rail shop east access. The set collided with a moving freight car and stopped. Six people were exposed during the incident.
Fatal Risk	Rail Impact on Person
Risk Category	Monitor
Pre / Post Rating	Significant (3) Possible (2)
Findings / Missing Controls	<ul style="list-style-type: none">Lack of controls and poor work practice for securing wagons before decoupling from the Zephyr locomotive.Failure to install wheel chocks.
Applicable Policies / Procedures	<ul style="list-style-type: none">SOP-6.01-UG-T16 Ballast Train Delivery and Ballast Discharging
Employee Condition	No Injury
Contact	Matthew Sullivan, Sr. Vice President-Underground Mine Division

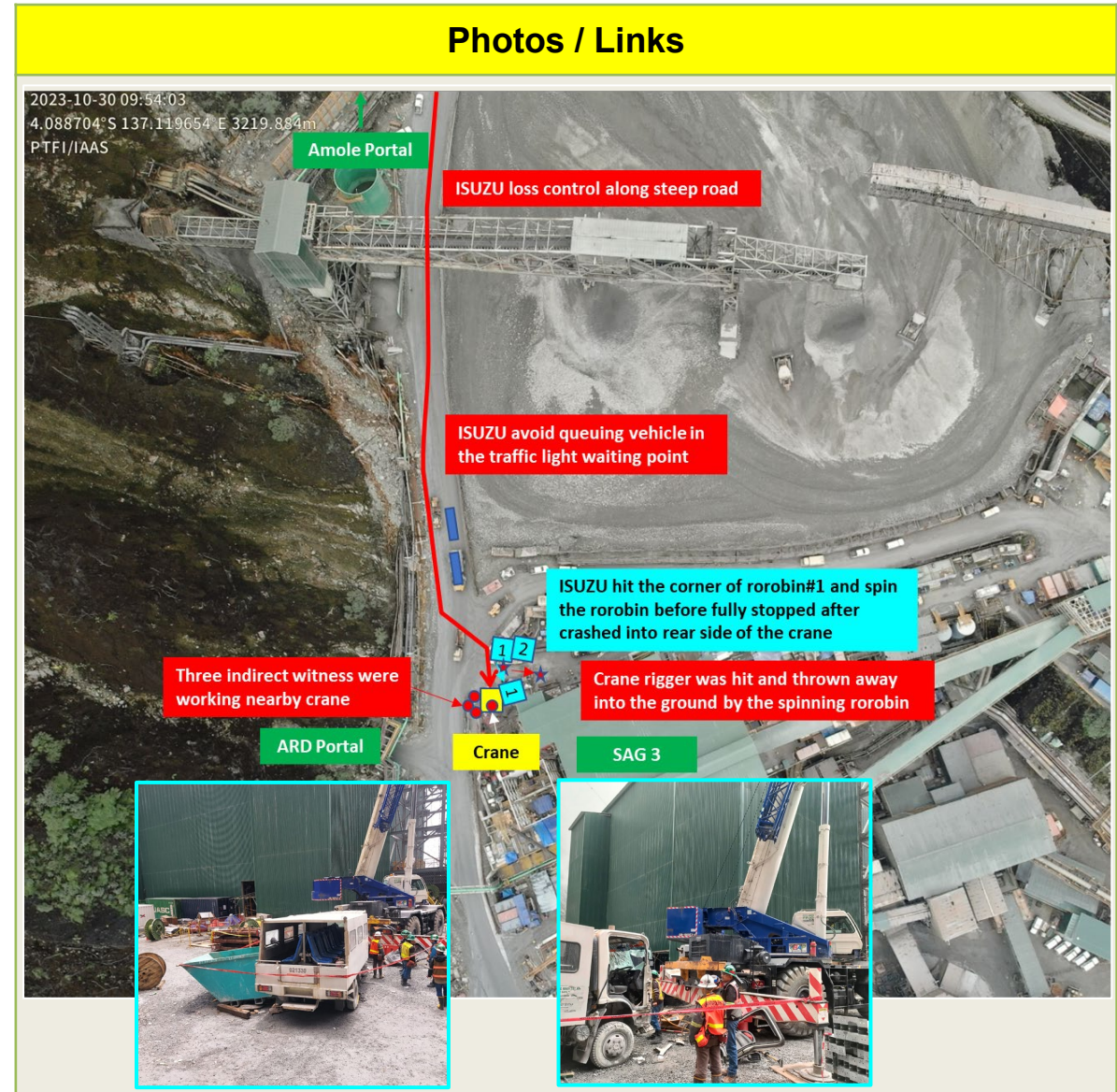
Photos / Links

Path the ballast train followed.



Potential Fatal Event: Manhaul Truck Collided with Crane

Preliminary Incident Details	
Operation	PT Freeport Indonesia
Date / Time	December 4, 2023 / 11:30 a.m.
Type	Injury
Summary	An Isuzu passenger transport truck was heading to Kasuang when the driver lost control along a steep downhill road segment. The vehicle hit a trash bin, causing it to spin, before striking a crane and coming to a stop. The trash bin struck a rigger who was standing nearby, resulting in injury. The truck operator's foot was pinched inside the cabin, requiring extraction to be released from the vehicle.
Fatal Risk	Vehicle Collision or Rollover
Risk Category	Actionable
Pre / Post Rating	Significant (3) Likely (3)
Findings / Missing Controls	<ul style="list-style-type: none">• Incorrect or unsuccessful use of proper gear selection• Failure to operate vehicle according to road conditions• Failure to secure control of the vehicle
Applicable Policies / Procedures	SOP-6.01-UGMO03 Operating Procedure Truck Isuzu NPS-75 Type Manhaul, Boom Crane and Rescue Truck in the Underground Mine and Surface Area
Employee Condition	Truck operator received first aid. Rigger sustained chest and hand injuries and is under observation.
Contact	Matthew Sullivan, Sr. Vice President-Underground Mine Division



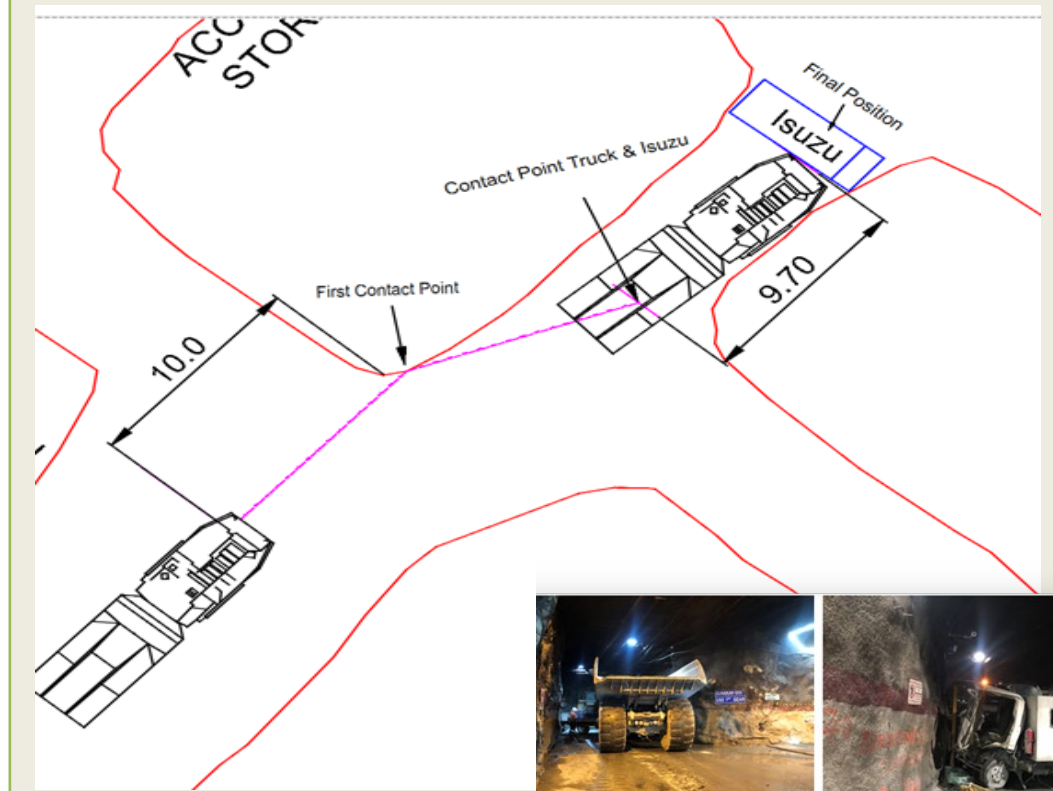


Potential Fatal Event: Haul Truck Collided with Isuzu Man Haul

Preliminary Incident Details

Operation	PT Freeport Indonesia
Date / Time	December 20, 2023 / 6:30 a.m.
Type	Injury
Summary	The operator of an AD60 haul truck lost control of the vehicle and accelerated into an Isuzu man haul unit coming from the opposite direction. The haul truck collided with the man haul's front cabin structure, pushing the Isuzu backward ~10 meters (30 feet) before turning it ~90 degrees. The man haul driver and five passengers were able to exit the vehicle without emergency team assistance.
Fatal Risk	Vehicle Collision or Rollover
Risk Category	Monitor
Pre / Post Rating	Significant (3) Possible (2)
Findings / Missing Controls	Failure to operate equipment properly – Prior to hitting the man haul, the haul truck accelerated toward the rib. The operator tried to apply the service brake with the left foot while still applying the throttle. The haul truck hit the rib and articulated right. The sudden change in direction caused the operator's left foot to come off the brake and right foot to apply full throttle.
Applicable Policies / Procedures	<ul style="list-style-type: none"> •SOP-6.01-UG-J05 Operating Procedure Truck Elphinstone Series AD30, AD55, AD55B and AD60 •SOP-6.01-UG-J08 Elphinstone AD55, AD55B and AD60 Truck Operating Procedure and Truck Guidance System
Employee Condition	Man haul operator sustained a hand abrasion and shin contusion and was released fit for work after undergoing medical observation at Ridge Camp Clinic.
Contact	Matthew Sullivan, Sr. Vice President-Underground Mine Division

Photos / Links



Above: Map of incident location

Right: Photos of damage to the man haul



Potential Fatal Event: Pedestrian Struck By Light Vehicle

Preliminary Incident Details	
Operation	Miami Smelter
Date / Time	December 27, 2023 / 5:57 a.m.
Type	Injury
Summary	An employee was walking through a parking lot to join a lineout meeting when a pickup truck made a wide turn into a parking spot and struck the employee, who was knocked to the ground.
Fatal Risk	Vehicle Impact on Person
Risk Category	Monitor
Pre / Post Rating	Significant (3) Possible (2)
Findings / Missing Controls	<ul style="list-style-type: none"> No documented vehicle inspection performed Employee was crossing parking lot outside of designated walkway Light vehicle windows were not fully defrosted, reducing visibility Speed
Applicable Policies / Procedures	<ul style="list-style-type: none"> Interaction with Heavy Mobile Equipment – Surface
Employee Condition	The employee was taken to the regional medical center with a scraped knee and abdominal pain and was released with no restrictions.
Contact	Louie Barreras, Senior Supervisor Health and Safety

Photos / Links

The light vehicle (left) that struck the employee and the parking spot.

THE POWER OF COPPER

Agency Shares

December 2023

FCX
LISTED
NYSE



ICMM
Member

FREEPORT
FOREMOST IN COPPER

fcx.com

OSHA – Winter Weather



Introduction

Winter weather presents hazards including slippery roads/surfaces, strong winds and environmental cold. Employers must prevent illnesses, injuries, or fatalities, by controlling these hazards in workplaces impacted by winter weather.

OSHA and National Oceanic and Atmospheric Administration ([NOAA](#)) are working together on a public education effort aimed at improving the way people prepare for and respond to [severe weather](#). This page is designed to help businesses and their workers prepare for winter weather, and to provide information about hazards that workers may face during and after winter storms.



*OSHA is a Weather-Ready Nation
Ambassador committed to
working with NOAA and other
Ambassadors to strengthen
national preparedness for and
resilience against extreme
weather.*

Preventing Slips on Snow and Ice

To prevent slips, trips, and falls, employers should clear snow and ice from walking surfaces, and spread deicer, as quickly as possible after a winter storm. When walking on snow or ice is unavoidable workers should be trained to:

- Wear footwear that has good traction and insulation (e.g. insulated and water resistant boots or rubber over-shoes with good rubber treads)
- Take short steps and walk at a slower pace to react quickly to changes in traction



Preventing Falls When Removing Snow from Rooftops and Other Elevated Surfaces

[OSHA's Hazard Alert, Snow Removal: Know the Hazards Pamphlet](#), and [winter weather webpages](#) provide guidance to employers on how to prevent serious injuries and fatalities. Employers should consider options to avoid working on roofs or elevated heights, plan ahead for safe snow removal and must:

- Provide required fall protection and training when working on the roof or elevated heights
- Ensure ladders are used safely (e.g. clearing snow and ice from surfaces)
- Use extreme caution when working near power lines
- Prevent harmful exposure to cold temperatures and physical exertion