



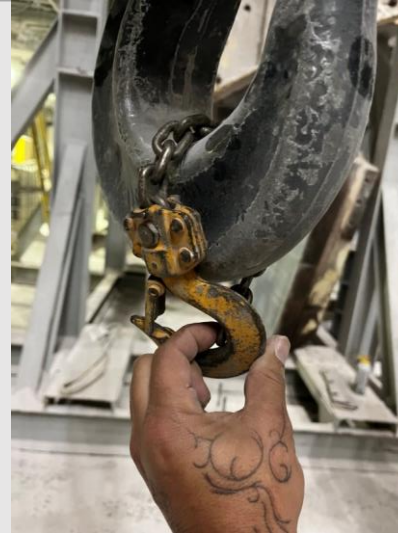
Uncontrolled
Release of Energy

Potential Fatal Event: Employee Struck with Rigging

Preliminary Incident Details

Operation	Morenci
Date / Time	April 18, 2024 / 3:15 p.m.
Event Type	Injury – Restricted Duty
Summary	A mechanic was lowering guides with a crane. A come-along was attached to the crane and the guide to stabilize and balance the load. The mechanic observed signs of over-tension and tried to loosen the come-along. While adjusting, the chain broke, causing a component to strike the employee's hard hat.
Risk Category	Actionable – Significant (3) Likely (3)
Findings / Missing Controls	<ul style="list-style-type: none"> Lifting execution – improper use of equipment
Applicable Policies / Procedures	<ul style="list-style-type: none"> FCX-HS32 Crane and Rigging Policy Original equipment manufacturer procedures
Employee Condition	<ul style="list-style-type: none"> Employee sustained two lacerations and was treated with multiple staples.
Contact	<ul style="list-style-type: none"> Jacob Sweet, Manager-Health and Safety John Murphy, Manager-Metcalf Mill

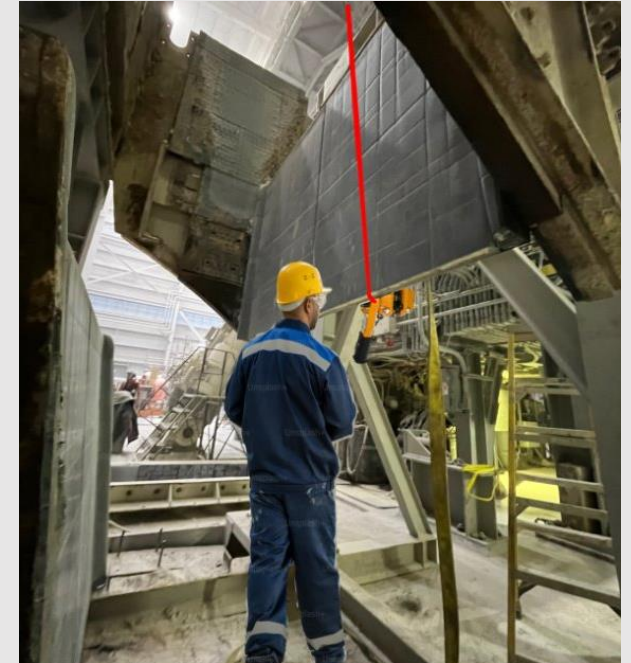
Photos / Links



Come-along secured to the crane hook.



Employee's hard hat after impact.



Reenactment of employee's position and chain location (red line).