



Potential Fatal Event: Fall Through an Open Hole

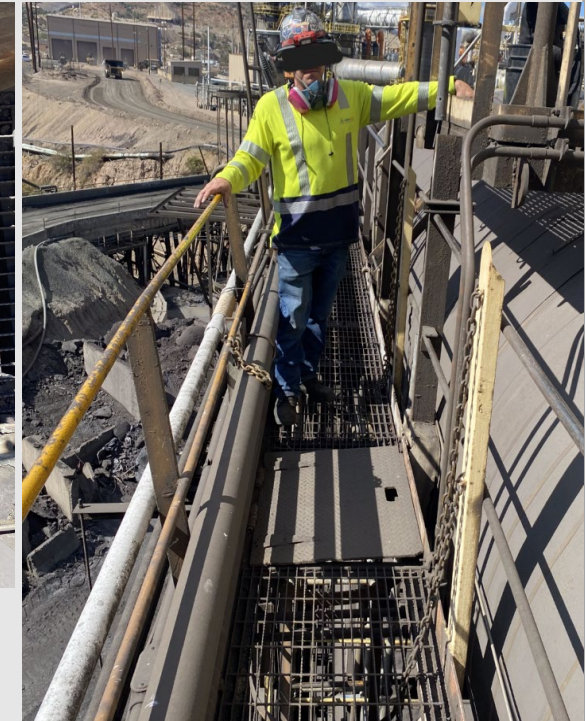
Preliminary Incident Details

Operation	Miami Smelter
Date / Time	October 25, 2023 / 11:30 a.m.
Type	Injury
Summary	A worker carrying a junction box with both hands in front was following a fellow worker on a catwalk. A hatch door was open in the catwalk to provide access to a lower platform. The first worker stepped over the open hatch. The second worker, who was carrying the junction box, could not see the open hatch. Without warning, the worker fell through and dropped approximately nine feet before hitting the platform below, sustaining minor injuries.
Fatal Risk	Fall From Heights
Risk Category	Monitor
Pre / Post Rating	Significant (3) Possible (2)
Findings / Missing Controls	<ul style="list-style-type: none">• Chain guards not used• Hard barricade and flagging not used• Failure to initiate correct action to close hatch door before proceeding
Applicable Policies / Procedures	<ul style="list-style-type: none">• FCX-HS02 Working at Heights
Employee Condition	<ul style="list-style-type: none">• Worker sustained abrasions and contusions along left arm and leg. Released to full duty after evaluation at the local emergency room.
Contact	Cameron Coon, Senior Supervisor-Health and Safety

Photos / Links



The open hatch the worker fell through and platform below (looking top down).



An example of how the catwalk with hatch and chains are to be used when the hatch is open.