



# Potential Fatal Event: Contractor Falls from Shovel Ladder

## Preliminary Incident Details

<b>Operation</b>	Climax
<b>Date / Time</b>	October 25, 2023 / 11:30 a.m.
<b>Type</b>	Injury
<b>Summary</b>	<p>A contractor employee used the emergency egress ladder to access the track below the operator's cab to clean the front of the shovel. After cleaning, the employee began to ascend the ladder, which had retracted. While part way up the ladder, it descended, causing the contractor to fall an estimated 5 to 10 feet below onto the tracks.</p>
<b>Fatal Risk</b>	Fall From Heights
<b>Risk Category</b>	Monitor
<b>Pre / Post Rating</b>	Significant (3) Possible (2)
<b>Findings / Missing Controls</b>	<ul style="list-style-type: none"><li>• Contractor fall protection was not connected</li><li>• Onsite personnel lift was in use on the other side, so not used for this task</li><li>• Job walk was not performed prior to starting task</li></ul>
<b>Applicable Policies / Procedures</b>	<ul style="list-style-type: none"><li>• Working at Heights</li></ul>
<b>Employee Condition</b>	Contractor is recovering from a fractured patella
<b>Contact</b>	Greg Gerloff, Senior Supervisor-Industrial Hygiene

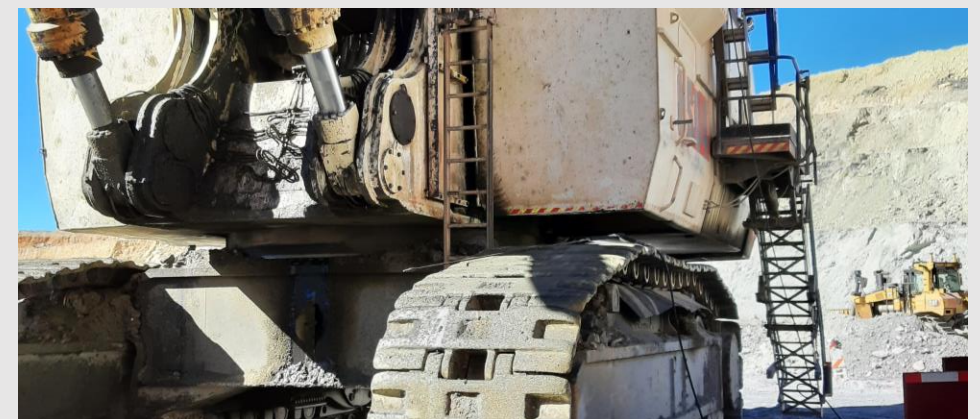
## Photos / Links



*Ladder Extended*



*Ladder Retracted*



*Scene Overview*