



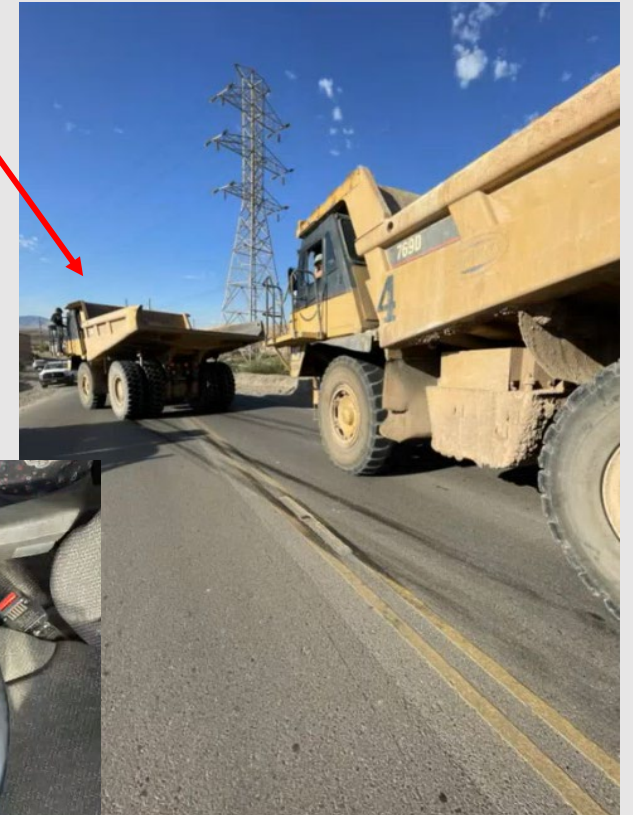
# Potential Fatal Event: Steering Wheel Came Off Steering Column

## Preliminary Incident Details

<b>Operation</b>	Morenci
<b>Date / Time</b>	August 31, 2023 / 9:40 a.m.
<b>Type</b>	Near Miss
<b>Summary</b>	Contractor haul truck operator was driving an unloaded CAT 769D downhill when the steering wheel came off. The driver activated all braking systems and began to drift into the oncoming traffic lane. A service truck in that lane was able to avoid the haul truck, which slid about 25 feet before stopping. A second haul truck following behind the first one also applied their brakes and came to a sliding stop.
<b>Fatal Risk</b>	Vehicle Collision
<b>Risk Category</b>	Monitor
<b>Pre / Post Rating</b>	Significant (3) / Possible (2)
<b>Findings / Missing Controls</b>	<ul style="list-style-type: none"><li>The steering column had been replaced three weeks prior to the incident as part of a rebuild.</li><li>The keeper nut holding the steering wheel onto the steering column was not properly torqued.</li><li>Protocols for quality assurance/control were not followed.</li></ul>
<b>Applicable Policies / Procedures</b>	<ul style="list-style-type: none"><li>CAT 769D Task Training</li><li>Interaction with Heavy Mobile Equipment</li></ul>
<b>Employee Condition</b>	No Injury
<b>Contact</b>	Dana Wise, Manager Health and Safety

## Photos / Links

*The final location of the haul truck, which slid about 25 feet before coming to a stop after the steering wheel came off the steering column.*



*The steering wheel that came off the steering column during operation*



# Potential Fatal Event Learnings: Steering Wheel Came Off Steering Column

## Causal Factors

1. The keeper nut in the steering column was not torqued/tightened

## Action Items

(Empire) technicians will no longer place steering wheel cap before a QC inspection is completed, a white paint dot will be applied to a torqued nut to indicate proper torquing

A QC detailed cab checklist (by Empire) will include a check of the steering wheel retaining nut for torque indication and will be uploaded to the work order and be traceable to technician performing work

## Hierarchy of Controls

Administrative

Administrative