

## Copper Queen Branch- Bisbee AZ

### HAZARD RECOGNITION



**The following rules and guidelines apply during your visit at Copper Queen Mine Site. For your personal safety and the safety of others, observe these rules and guidelines at all times.**

#### RELEASE AND INDEMNITY

On behalf of myself, my parent and subsidiary corporations, in consideration for the granting of permission to enter upon the property owned by Freeport-McMoRan, release and agree to hold harmless and indemnify Freeport-McMoRan, its affiliates, officers, employees, and agents, from and against all claims and all injuries, losses, and damages to any person or property arising out of entry onto the company's operations from the date of this release.

#### HAZARD RECOGNITION AND AVOIDANCE

- Freeport-McMoRan prohibits the transport or use of alcoholic beverages, drugs and narcotics on company property.
- Observe traffic regulatory signs and rules at all times.
- Vehicle operators and passengers must wear seatbelts while vehicles are in motion.
- All vehicles 1 ton and above must be chocked and have the parking brake set when parked.
- All vehicles less than 1 ton must have the park brake engaged when parked.
- All vehicles are subject to periodic, unannounced inspections at any location on the site.
- Approach mobile equipment with caution. Stay out of its blind zones and make eye contact with the operator.
- Use proper eye protection in areas where cutting and welding are being performed.
- Do not walk under suspended loads.
- Be alert for slip, trip and fall hazards.
- Observe all No Smoking areas.

#### BASIC PERSONAL PROTECTIVE EQUIPMENT – PPE

- Hard hat
- Safety glasses with side shields
- Reflective Vest
- Safety toe boots
- Long pants that extend over the top of boots
- Hearing Protection

#### FIREARMS

In Accordance with A.R.S. 12-781, Firearms must be located in your vehicle or in a locked compartment on your motorcycle and the firearm must not be visible from outside the motor vehicle or motorcycle.

#### EYEWASH STATIONS

Eyewash stations are located throughout the mine site. In the event you are exposed to a hazardous chemical or substance, proceed to the nearest safety station and flush with water immediately for a minimum of 15 minutes, then seek medical attention.

#### PHONE NUMBERS

- Emergency: 9-911 (from any land line)
- Site Manager (Robert Quintanar): (520) 432-6209
- Site Senior Supervisor (Terry Maddux): (520) 249-6290
- Site Health and Safety Supervisor (John Acosta): (520) 508-7427

#### FATAL RISKS PRESENT AT COPPER QUEEN BRANCH

These symbols indicate the types of Fatal Risks that may be present in the area. Please consult with site supervisors before proceeding to ensure all Critical Controls are in place to prevent any serious incidents from occurring.



Drowning



Entanglement and  
Crushing



Exposure to Electrical  
Hazards



Fall from Heights



Falling Objects



Fire



Ground Failure



Hazardous Substance  
– Acute Exposure



Hazardous Substance –  
Chronic Exposure



Confined Spaces



Lifting Operations



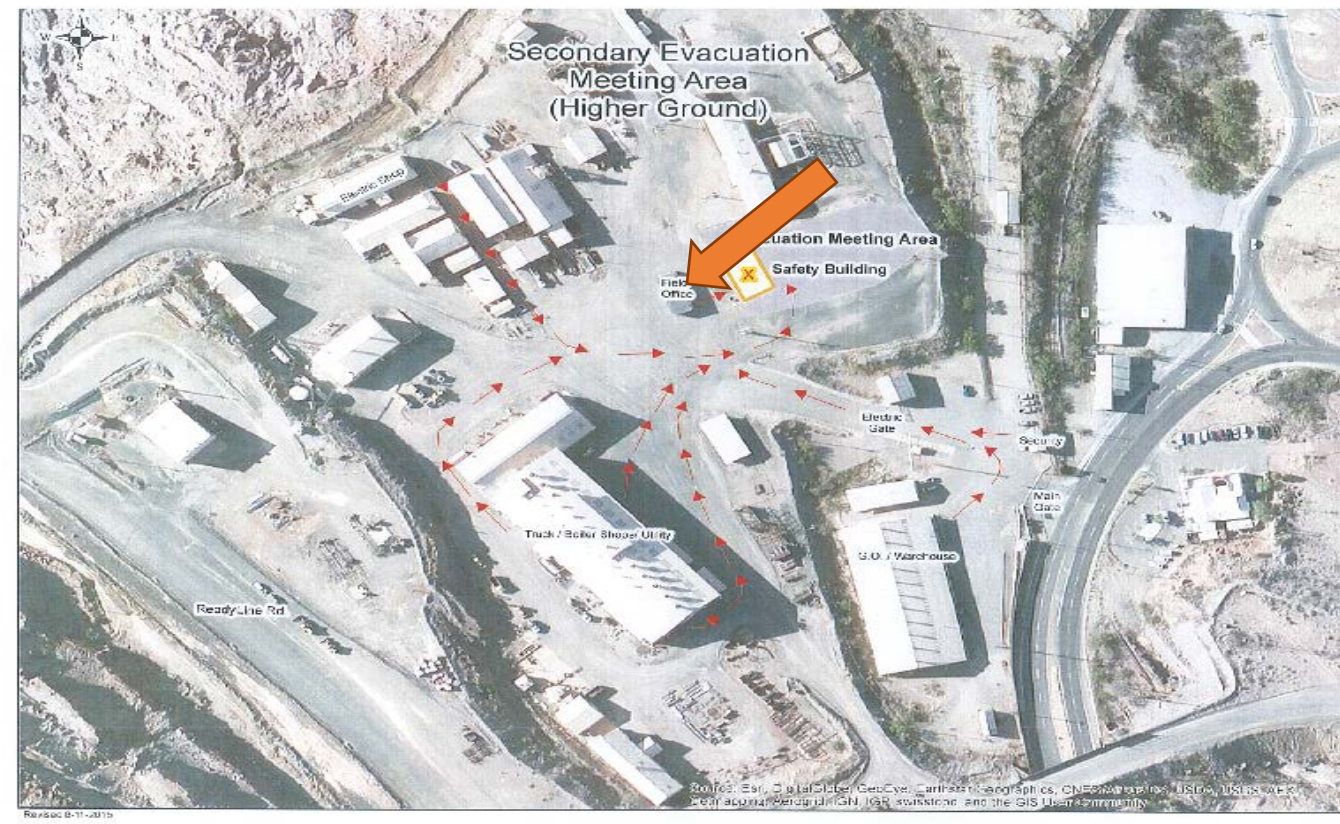
Uncontrolled Release of  
Energy



Vehicle Impact on  
Person



Vehicle Collision or  
Rollover



- EVACUATION PLAN**
- Communication while on property is required by either cell phone or radio.
  - In case of evacuation, listen for the mine horn.
  - Notification will be given if you are to Shelter in Place.
  - If horn sounds 9 times, personnel shall gather at the security guard shack for roll call.
  - If horn sounds 5 times, personnel shall gather at the Safety Building for roll call.



**(9) MINE HORN BLASTS-REPORT TO GUARD SHACK AT MAIN GATE**



**(5) MINE HORN BLASTS REPORT TO SAFETY BUILDING**