



2016 February Contractor Safety Meeting



FCX
LISTED
NYSE

fcx.com



FREEPORT-McMoRAN

Agenda

VALUE AT OUR CORE

- TRIR
- PFEA
- January incident overview
- MSHA citations
- Contractor Management
- Environmental



TRIR

**“EXCELLENCE IS
NEVER AN ACCIDENT;
IT IS THE RESULT OF
HIGH INTENTION,
SINCERE EFFORT,
INTELLIGENT DIRECTION,
SKILLFUL EXECUTION
AND THE VISION TO SEE
OBSTACLES AS
OPPORTUNITIES.”**

ANONYMOUS



Day of the Year	Employees working Safely (FMMO Only, includes First Aids)			REPORTABLE INJURY RATE				LTIR			PROPERTY DAMAGE			DAYS W/O LTA	Hrs W/O LTA	Days W/O Rec.	Hrs W/O Rec.	MTD HEHI	YTD HEHI	YTD HEHI Rate	HEHI Target
38	TOTAL	MTD	YTD	MTD	YTD	QTD	Target	MTD	YTD	Target	MTD	YTD	Target								
Number	3243	3241	3224	2	11	11	1.60	1	1	0.38	15	54	12.84	3	70972	1	23657	0	2	0.44	0.53
Rate				2.42	2.45	2.45		1.21	0.22		18.12	14.73									

Safety Performance

2/8/2016

VALUE AT
OUR CORE

FCX
LISTED
NYSE

fcx.com

If you are not the intended recipient, you are hereby formally notified that any use, copying or distribution of this material, in whole or in part, is strictly prohibited.

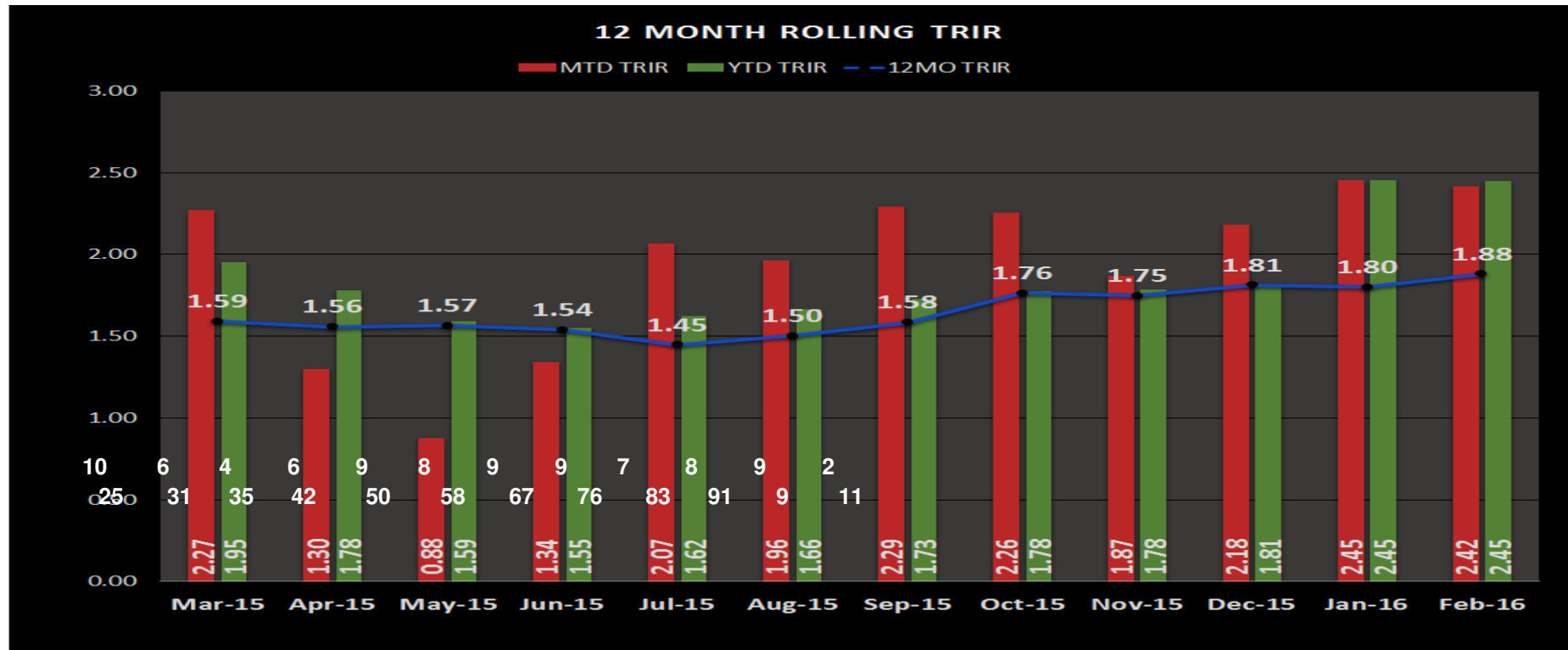


Safety Dashboard 2/7/2016

VALUE AT OUR CORE

TRIR BREAKDOWN	MTD REP	MTD TRIR	YTD REP	YTD TRIR	1 st QTD REP	1 st QTD TRIR	Quarterly Reportable Injuries
FMMO	2	3.22 124345	11	3.26 675015	11	3.26 675015	
CONTRACTORS	0	0.00 41257	0	0.00 223968	0	0.00 223968	
CURRENT TOTAL MORENCI ALL	2	2.42 165602	11	2.45 898983	11	2.45 898983	

11





The road to success must be paved with optimism!

VALUE AT OUR CORE

Division	Date of Last Rep. Injury (FMMO)	# of Days w/o Rep. Injury (FMMO)	Date of Last Rep. Injury (Contractors)	# of Days w/o Rep. Injury (Contractors)	Date of Last HEHI Event	# of Days w/o a HEHI Event
MAINTENANCE SERVICES	1/24/2015	14	9/14/15	146	8/1/2015	159
HYDROMET & CLP	12/6/2015	63	3/27/15	317	6/10/2015	230
LEACHING	11/17/2015	82	12/18/15	51	2/25/2015	286
MORENCI CONCENTRATOR	11/18/2015	81	8/25/15	166	2/10/2015	380
METCALF CONCENTRATOR	11/5/2015	94	8/8/15	183	3/3/2015	341
CRUSH & CONVEY	1/19/2016	19	11/10/15	89	7/28/2015	194
MINE MAINTENANCE	2/6/2016	1	10/18/15	112	9/25/2015	135
FRAGMENTATION/LOADING/SUPPORT	1/14/2016	24	4/19/12	1396	5/7/2015	276
HAULAGE	1/29/2016	9	8/1/2008	2958	5/7/2015	276
RESOURCE MANAGEMENT	11/17/2014	447	11/6/14	458	1/5/2016	33
ADMINISTRATION	2/10/2015	380	9/15/15	145	1/1/2014	768
MERCANTILE	12/28/2015	41	3/3/15	341	1/1/2014	768
CONTRACTORS	12/16/2015	53	12/16/15	53	1/28/2016	10



VALUE AT OUR CORE

— NO JOB —
IS SO IMPORTANT
& NO SERVICE IS
SO URGENT
THAT WE CANNOT
TAKE TIME TO
PERFORM OUR WORK
— SAFELY —



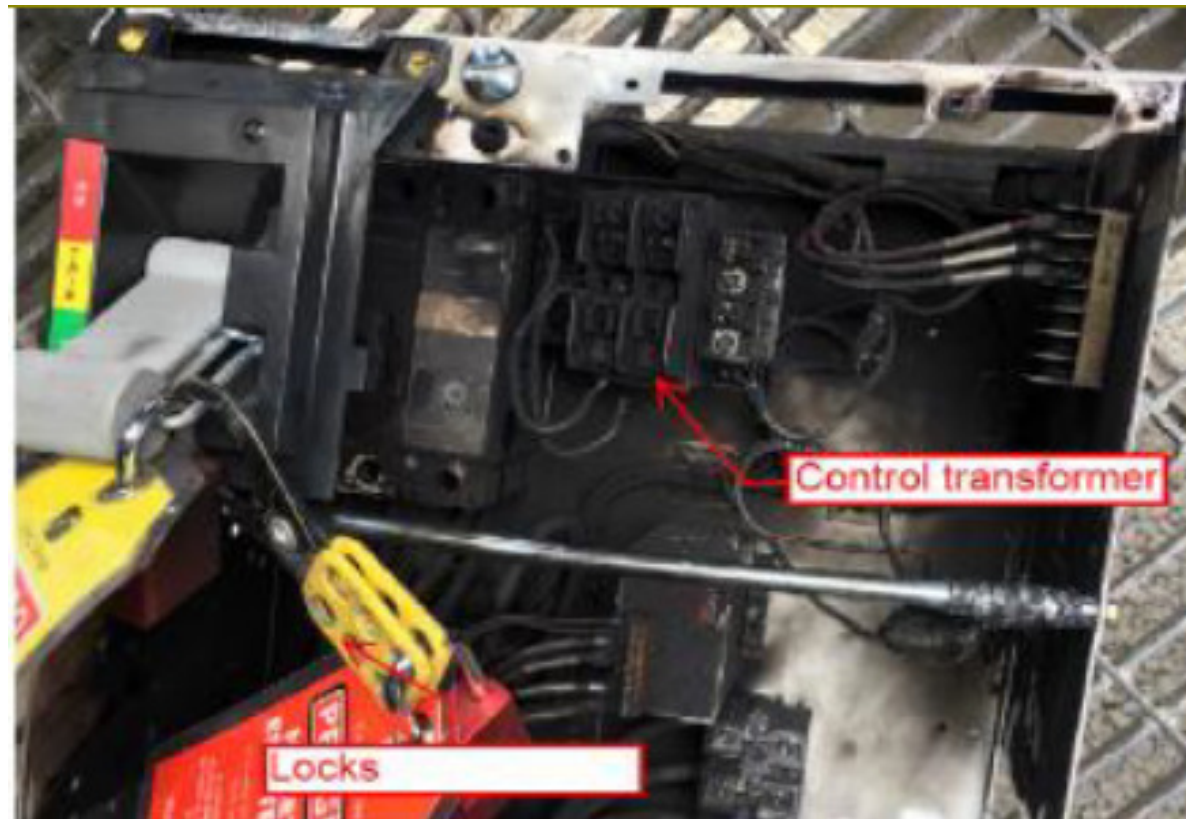
FREEPORT-McMoRAN

PFEA



Cerro Verde Arc Flash

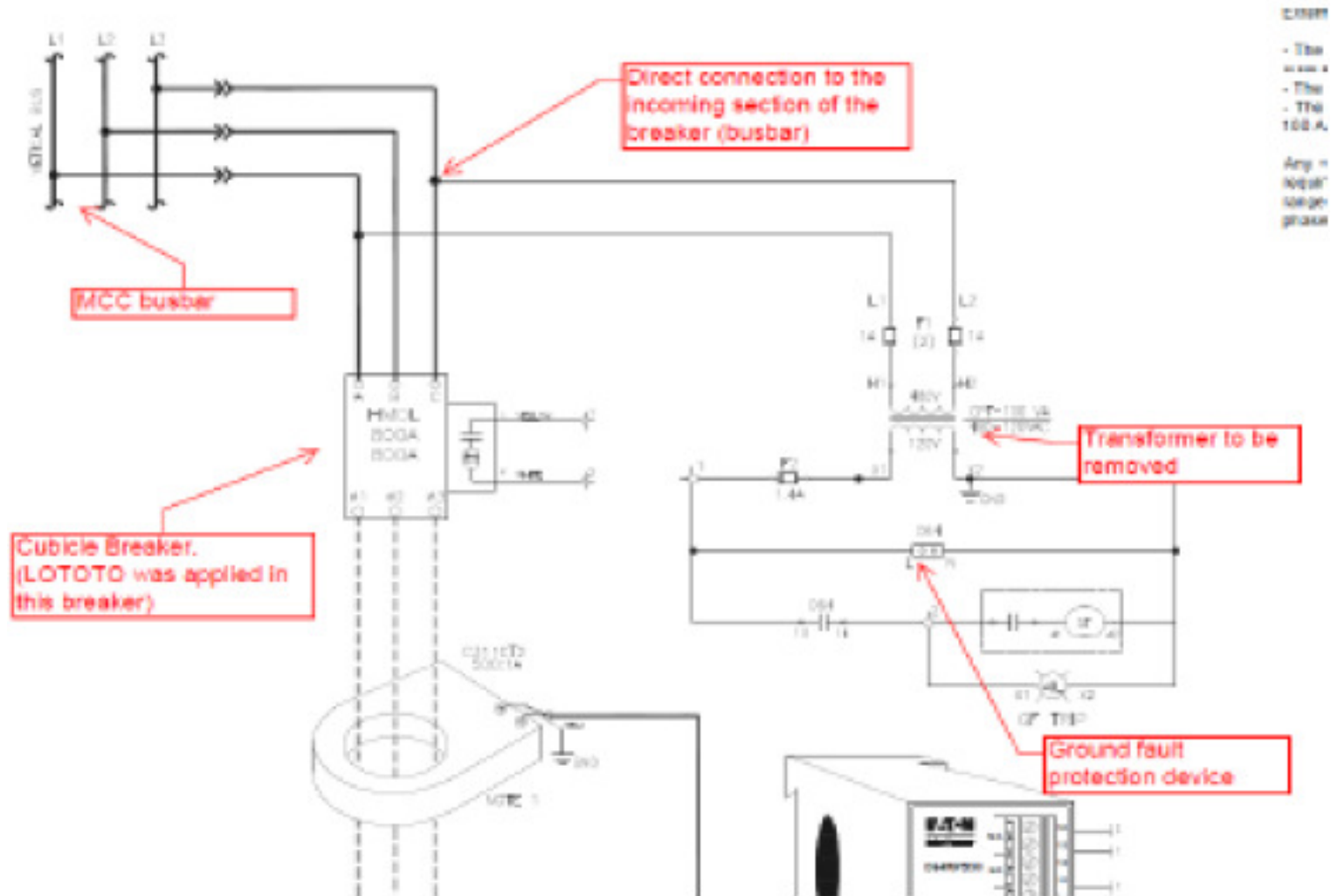
VALUE AT OUR CORE





Cerro Verde Arc Flash

VALUE AT OUR CORE





FREEPORT-McMoRAN

January Overview



First Aid & Restricted Duty

VALUE AT OUR CORE

1-First Aid & 1-Restricted Duty

Date	12.28.2015		
Organization	Mercantile		
Division	Community Center		
Potential Risk	2	3	6
	Consequence	Likelihood	Potential Risk
Brief Description	A maintenance employee tasked the Lead Lifeguard to clean the pool walls and Plexiglas in the pool area. The Lead Lifeguard then delegated the task to the lifeguards. The lifeguards used CLR cleaner to sprayed the Plexiglass. The CLR was left to sit for approximately 2-3 hours before they wiped it off. The initial spray mist and reaction from the CLR and chlorine caused irritation to the eyes and skin of two lifeguards. The employees rinsed their eyes and skin without relief but continued to work the remainder of their shift. Employees were taken to clinic after their shift.		

Best Practices

1. Conduct thorough JSA/Risk Assessment prior to starting work
2. Ensure adequate training for all individuals involved with chemical handling. (HAZCOM)
3. Provide & utilize proper PPE per SDS recommendations.





High Risk – Property Damage

VALUE AT OUR CORE

Property Damage			
Date	01.05.2016		
Organization	Administration		
Division	Resource Management		
Potential Risk	3	3	9
	Consequence	Likelihood	Potential Risk
Brief Description	The operator of the LV848A stopped at the first stop sign at the Highway 191 and Acid Gate Rd. intersection. He saw a break in the North bound traffic and pulled out. He was struck by a vehicle in the South bound lane. The employee stated he did not see the car.		

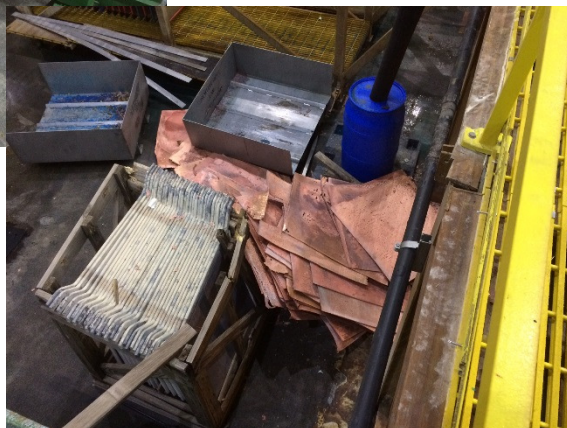




High Risk – Property Damage

VALUE AT OUR CORE

Property Damage			
Date	01.10.2016		
Organization	Processing		
Division	Hydromet		
Potential Risk	3	2	6
	Consequence	Likelihood	Potential Risk
Brief Description	EW Operator was moving the pre-strip bin with the overhead to the Back Bay when the it slid off the strong back. The pre-strip bin went through the top and mid fiberglass Handrails to the lower level. There were no other employees in the Back Bay at the time of the incident.		





Near Miss

VALUE AT OUR CORE

Near Miss			
Date	01.19.2016		
Organization	Contractor		
Division	Leaching		
Potential Risk	3	2	6
	Consequence	Likelihood	Potential Risk
Brief Description	A B.J. Cecil driver was driving to unload acid at Ponderosa when the employee could not see so he reached up to put down his visor. The truck driver veered to the left striking a berm. The operator was traveling approximately 25 mph.		

Best Practices

1. Conduct a thorough equipment inspection prior to vehicle use.
2. Ensure windows are clean prior to vehicle operation to aid in visibility.
3. Drive to weather / road conditions and decrease speed during adverse conditions.
4. When visibility is decreased or obstructed, pull to a safe location and stop.



View from in the cab



First Aid

VALUE AT OUR CORE

First Aid			
Date	01.20.2016		
Organization	Contractor		
Division	Leaching		
Potential Risk	3	2	6
	Consequence	Likelihood	Potential Risk
Brief Description	A CTI employee was preparing to unload acid at the Metcalf SX Acid Unloading Dock. When the employee opened the vapor recovery valve, there was stored pressure inside the pipe causing acid to be sprayed onto the employees face shield and acid jacket. Acid Contacted the employee's face and right arm causing minor burns. Employee was treated at GHR.		

Best Practices

1. Always perform a workplace exam, JSA, equipment inspection prior to starting a task.
2. Ensure proper training
3. Ensure all equipment is properly functioning prior to unloading.
4. Ensure PPE is adequate for potential exposure.





Property Damage

VALUE AT OUR CORE

Property Damage			
Date	01.24.2016		
Organization	Mine		
Division	Haulage		
Potential Risk	4	2	8
	Consequence	Likelihood	Potential Risk
Brief Description	The operator of the 587HT lost control of the truck and drove into the safety berm that separates the LVA and Haul Roads. The operator stated he was blinded by the sun glare when he realized his front tire had gone over the safety berm. The truck was stopped when the rear tire was stopped by safety berm.		

Best Practices

1. Ensure windows are clean prior to vehicle operation to aid in visibility.
2. Drive to weather / road conditions and decrease speed during adverse conditions.
3. When visibility is decreased or obstructed, pull to a safe location and stop.

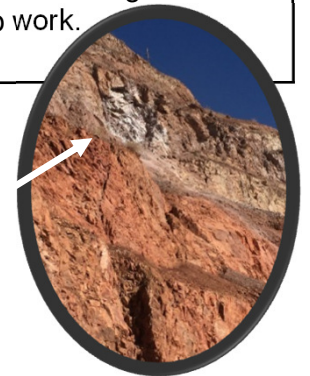


Property Damage

VALUE AT OUR CORE

Property Damage			
Date	01.28.2016		
Organization	Contractor		
Division	Resource Management		
Potential Risk	3	3	9
	Consequence	Likelihood	Potential Risk
Brief Description	The 9002 articulating truck was being loaded by the 5012 excavator when the operator of the articulating truck noticed rocks raveling from the high wall. The articulating truck operator exited the cab to get a closer look and noticed a large chunk of rock released overhead. He exited the articulating truck and retreated to safety. The operator of the excavator also exited and retreated to a safe distance. Once the area was clear and raveling stopped, employees removed the equipment from the area a parked it a safe distance away.		

Best Practices	
1.	Ground conditions must be examined by a competent person, prior to work.
2.	When necessary ground must be tested and scaling conducted.
3.	Loose and unconsolidated ground conditions should be reported immediately.
4.	Catch basins should be established to prevent loose material from falling where persons are required to work.





Near Miss

VALUE AT OUR CORE

Near Miss			
Date	02.04.2016		
Organization	Mine		
Division	Fragmentation-Loading/ Support		
Potential Risk	3	2	6
	Consequence	Likelihood	Potential Risk
Brief Description	Two open vertical mine shifts were discovered unbermed and within 120 feet of a haul truck bathroom tie down. The mineshafts were unmarked.		

Best Practices

1. Complete thorough workplace exams
2. Caution should be used when approaching areas of uncertain mining history
3. Newly discovered mine openings must be sealed and communicated
4. When open holes are discovered, hard barricades must be installed





Lost Time

VALUE AT OUR CORE

Near Miss			
Date	02.04.2016		
Organization	Mine		
Division	Mine Maintenance		
Potential Risk	3	2	6
	Consequence	Likelihood	Potential Risk
Brief Description	An employee was skinning insulation when his knife slipped causing significant laceration to left pinky finger. The employee was wearing leather gloves at the time of injury.		

Best Practices

1. Always assess the task related risks prior to commencement of work
2. Use the right tool for the job
3. Ensure proper PPE usage (cut resistance gloves)





MSHA citations



Fire extinguisher

VALUE AT OUR CORE

- The fire extinguisher located in the cab of a Cat backhoe at the laydown yard did not have the monthly inspection documented.
- Should this fire extinguisher be needed to fight fires in the early stages and it fails, serious injury could occur.



VALUE AT OUR CORE





FREEPORT-McMoRAN

Labeling of containers

VALUE AT OUR CORE

- A 5 gallon safety can was not properly labeled. The can contained an unknown chemical which could expose the employee and result in illness and/or injury.



Labeling of Containers

VALUE AT OUR CORE

- **47.41 Requirement for container labels.**
- (a) The operator must ensure that each container of a hazardous chemical has a label. If a container is tagged or marked with the appropriate information, it is labeled.
- (1) The operator must replace a container label immediately if it is missing or if the hazard information on the label is unreadable.
- (2) The operator must not remove or deface existing labels on containers of hazardous chemicals.
- (b) For each hazardous chemical produced at the mine, the operator must prepare a container label and update this label with any significant, new information about the chemical's hazards within 3 months of becoming aware of this information.
- (c) For each hazardous chemical brought to the mine, the operator must replace an outdated label when a revised label is received from the chemical's manufacturer or supplier. The operator is not responsible for an inaccurate label obtained from the chemical's manufacturer or supplier.



FREEPORT-McMoRAN

Safe Access

VALUE AT OUR CORE

- Safe access was not provided to the electrical panels.





Drill

VALUE AT OUR CORE

- A drill power cord had the conductors exposed.





Freeport Citations

VALUE AT OUR CORE

- 56.20003a – Hoses were in the walkway leading to the raff tank.
- 56.14207 – The SU-48 Grader was found parked on a grade without the wheel chocks set.
- 56.14115b – A grinder located in the West Repair Weld Shop, was found with a 1/8 inch gap.
- 56.16005 – The Oxygen/Acetylene tanks, West of the VLE Plant were not secured.
- 56.42012 – A fire extinguisher located in the alley of the West Repair without a current annual inspection; 1 ½ years out of date.
- 56.16007b – A BO sling was found in use at the screen repair shop at the East end of the Mill.
- 56.20003b – Mud was noted on the floor of the South Repair Bay
- 47.41 – A diesel tank located in the South Repair Bay was not labeled to identify the contents.
- 56.4602 – An Oxygen/Acetylene at the 50-10 Tail Thickener underflow tail spigot tank was found with broken gauges
- 56.16006 – Valves on the Oxygen/Acetylene tanks at the 50-10 Tail Thickener underflow tail spigot tank were not protected.



Freeport Citations

VALUE AT OUR CORE

- 56.12023 – A welding lead in the 2 Unit Crusher Floor/ Counterbox floor was found with exposed inner conductors
- An electrical panel in the 3 Unit by the birdie cage was found with exposed lugs and missing cover plate.
- 56.16005 – Acetylene Tanks in the Crusher East Repair Bay were not secured.
- 56.12018 – The Crusher Control Room Breaker Box had breakers labeled as spare that were in the on position
- 56.4201a1 – A fire extinguisher at the 110 Subsite did not have a current annual inspection (January).
- 56.12006 – A Breaker Box was found at coalescent tanks with unlabeled breakers.
- 56.14100b – The SU-48 Grader was traveling when the inspector noticed the brake lights were not functioning properly.
- 56.14207 – The LV191A did not have the park brake set.
- 56.12069 – The lightning arrestor on a power pole was not attached to the ground



Freeport Citations

VALUE AT OUR CORE

- 56.12034 – A light fixture in the Pan Feeder Tool room was not equipped with a guard.
- 56.14112b – Adequate guards were not in place on the 1A-1B Tripper Car
- 56.14100c – The headlight and turn-signal on the FAB-44 Forklift did not function properly when tested.
- 56.20003 – Nails were protruding from a crate at the electrical laydown yard at the Central Tankhouse.
- 47.41a – A bottle of unknown liquid was found in the Electrical Shop, without a label to identify the contents.
- 47.41a – Two cans of lubricant were not labeled to identify the contents.
- 56.20014 – Chemicals were being stored in the same location as food.
- 56.4201 – Fire extinguisher found with expired annual inspection on the rental scissor-lift.
- 56.12032 – A flash card was missing from the 120/240 breaker box
- 56.11001 – Material accumulated in walkway in a dome shape making access hazardous.
- 56.18002(a) – Material (rocks and mud) accumulated on floor of the COB basement; flagging tag noted the hazard identified on Friday (2-5-16)
- 56.14103(b) – Broken rear window on CO134 loader (equipment was not tagged out, a B/O was placed during the inspection)



FREEPORT-McMoRAN

THE LOW HANGING FRUIT...

VALUE AT OUR CORE



HAS BEEN PICKED!



FREEPORT-McMoRAN

A central graphic featuring a grey t-shirt with a blue stylized logo. The logo consists of a vertical line with a circle at the top and a hook-like shape at the bottom. To the left of the t-shirt is a yellow and red striped sign with the text 'REMEMBER SAFETY GAIN ACCIDENT PAINFUL.' To the right is a yellow hard hat on a white stand, with the text 'Safety is first, you last.' above it. Below the hard hat is a blue sign with the text 'PRACTICE IT! SHOWING SAFETY IS NOT ENOUGH'.



FREEPORT-McMoRAN

Contractor Management

Gay Cole



VALUE AT OUR CORE

Competency Training

February 12, 2016 at Noon

Room 4 at Modoc Training Center

Ron Mason, Charles Olds, Jimmy Pearson, Dave Crownover,
Grady Partin, Sandi Hansen, Rory Wilson, Stacey Scott, Larry
Kerrigan, James Marin, Kari Swapp, Jason Wainscott, Alex Blake,
Tamela Doughty, Mark Williams, Rick Haswell, Jenny Burk, Nate
Shechter, Jason Watson, Chris Salle, Dwayne Stotlleyre, Todd
Marriage, Shawn Davidsen, Jeffrey Bradford, Steven Nemitz



FREEPORT-McMoRAN

VALUE AT OUR CORE

Competency Training

Feb 26 at 7 am

Rm. 4 at Modoc Training Center

Art Martinez, Dionna White, Gerardo Garcia, Troy Merrell, Renae Maldonado, John Peltó, Dominick Giacoletti, Wayne Hewitt, Nate Mortensen, Tom Blake, Tonya Norton, Troy Kowalski, Ed & Cheryl Comaduran, Ryan La Pointe, Justin Dupuy, David Bartels, Sean Taylor,

Andrew Koch III, Robert Groseth, David Gillmore, Chris Scorse, Darren Sanders, Jorisen Brinkerhoff, Bill Sollers



VALUE AT OUR CORE

***If you are unable to
make the class you are
assigned too, please let
me know.***



Gay Cole – Contractor Management Supervisor
928.865.7028 or 928.965.0756



FREEPORT-McMoRAN

Environmental Cynthia Christenson

If you are not the intended recipient, you are hereby formally notified that any use, copying or distribution of this material, in whole or in part, is strictly prohibited.

 FREEPORT-McMoRAN <small>MORENCI INC</small>	FREEPORT-McMoRAN COPPER & GOLD <small>MORENCI INC</small>	MSDS File Number:		 VALUE AT OUR CORE
		Reporting Date:		
	<h2 style="color: #4F81BD;">Environmental TRI Quarterly Reporting Form</h2>			
CONTRACTOR INFORMATION: (PLEASE PRINT)				
Company/Contractor Name:				
Product Name:				
Manufacturer:				
Location/Purpose:				
MSDS Product Requestor:				
Form must be completed at the end of each quarter and forwarded to Morenci Environmental Services.				
PLEASE CHECK THE REPORTING QUARTER:				
First Quarter (January - March)		<input type="checkbox"/>		
Second Quarter (April - June)		<input type="checkbox"/>		
Third Quarter (July - September)		<input type="checkbox"/>		
Fourth Quarter (October - December)		<input type="checkbox"/>		
Quantity	Unit of Measure	Container Size		
<i>Instructions: Fill out the company/contractor name, the product name, manufacturer name, and location that the product is used. Check the appropriate quarter that is being reported for and then indicate the quantity and units of measure for the product which was used during the reporting quarter. Send a copy of the completed form to Morenci Environmental Services by the 15th of the month following the close of the quarter.</i>				
Signature of person completing this form:				
Printed Name:				

Intranet posted document is the controlled copy. Verify printed document is still current prior to use.