

DRIVEN BY VALUE



# Monthly Contractor Safety Meeting

December 2017

# INTRODUCTION

- Facilities
- Emergency Exits
- Cell Phones
- Safety Share
- This months focus
  - Special Presentation by Ron Lindsay from Brahma
  - Environmental Presentation by Jonathan Anderson from FMI
  - Branch Safety Performance
  - Contractors Safety Manual Sections – 5.10 thru 5.13.3

# A Message From: Global Supply Chain (GSC)

- **GSC Contact:**
  - Please refer to the contact information for the Contract Administrator that issued your Agreement. Our office is located at Global Supply next to the Warehouse. Our assistant can place you in contact with your Contract Admin should you need to visit one of us.
- **Incident requirements for GSC:**
  - We expect to be notified within a reasonable time frame. Of course, priority is to notify Safety/the area you are working in. Our response will be specific to each individual case. We are here to assist, so do not hesitate to contact any one of us.

# WHO DO I CONTACT WHEN I HAVE AN ENVIRONMENTAL QUESTION?



**When in doubt. Call an Environmental Services representative.**



**SPILL HOTLINE — (928) 865-7745**



**Environmental Administration Office — Christina Seballos — (928) 865-6000**

**Environmental Yard, Satellite Accumulation, Roll Offs & Hoppers — Cody Watkins — 928-965-6928**

**Asbestos & Lead — Rob Walker — 928-215-6422**

**Air Quality — Shanna Holguin — (928) 965-0245, Bobby Scott — (928) 965-1770, Waleed Sunna — (928) 215-5695**



**Environmental ISO 14001 & Product Approvals — Ruth Chismar — (928) 215-9312 — Jonathan Anderson (928) 215-2730**

**Water Quality & Wild Life — James Hogan — (928) 965-0061, Dee Broadwell — (928) 965-3142, SWPPP — Jamie Aberle — (928) 215-0667**

**Asset Recovery & Morenci Transfer Station — Bryan Taylor — (928) 965-2777**

**Environmental Administration Accounting & Contracts — Cheryl Wright — (928) 965-1785**



## Contractor Environmental Guidance

Contractors are responsible for understanding the FCX Environmental Policy and complying with all site EMS requirements while on site.

- <https://fcx365-public.sharepoint.com/>

# Safety Performance

DRIVEN BY VALUE

12/04/2017



Day of the Year	FMMO Employees working Safely (Reportable Injuries Only)			DAYS W/O LTA	Hrs W/O LTA	Days W/O Rec.	Hrs W/O Rec.
337	TOTAL	MTD	YTD				
Number	3,170	3,170	3,103	22	589,315	5	133,935
Rate							

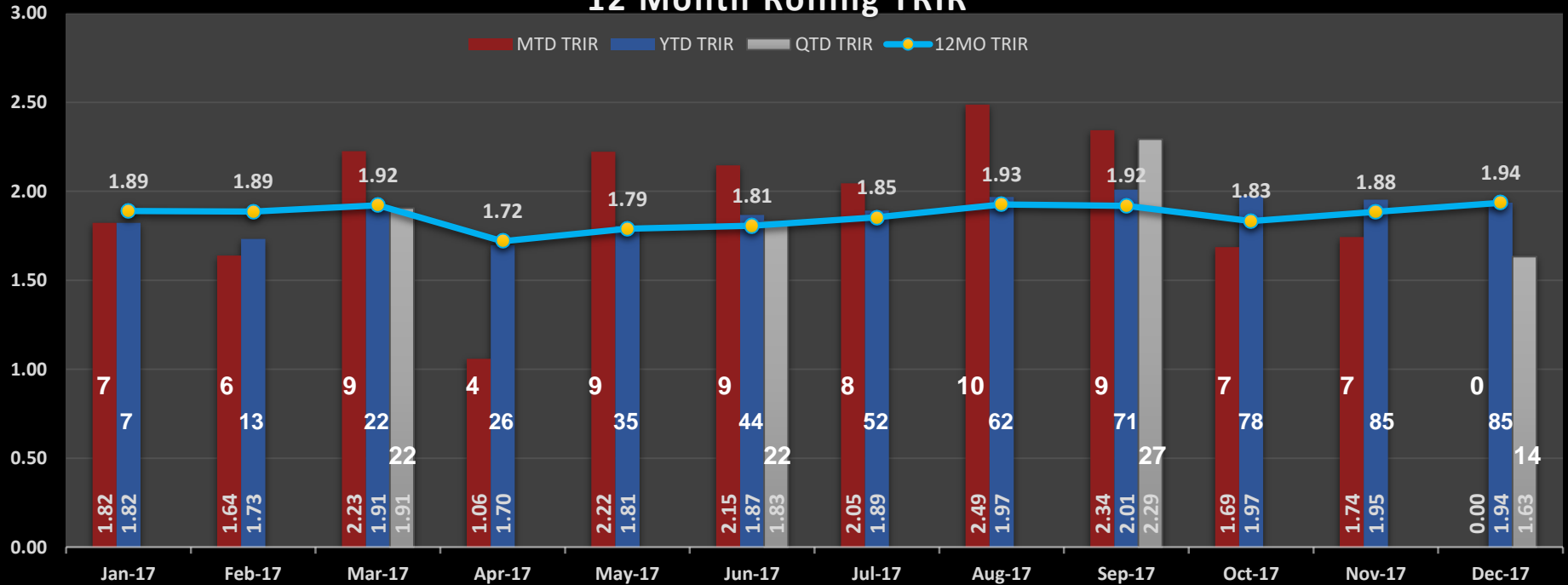
REPORTABLE INJURY RATE TRIR				Lost Time Injury Rate LTIR				Property Damage Rate PDIR				High Energy High Impact HEHI Events			
MTD	YTD	QTD	Target	MTD	YTD	QTD	Target	MTD	YTD	QTD	Target	MTD	YTD	QTD	Target
0	85	14	1.69	0	20	2	0.53	0	588	120	12.31	0	16	3	0.43
0.00	1.94	1.63		0.00	0.46	0.23		0.00	13.39	14.00		0.00	0.36	0.35	

217 Total Injuries

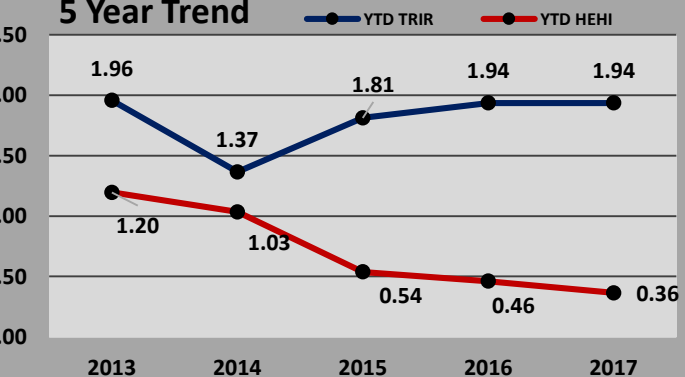
85 Reportable Injuries

# Safety Dashboard as of 12/3/2017

## 12 Month Rolling TRIR



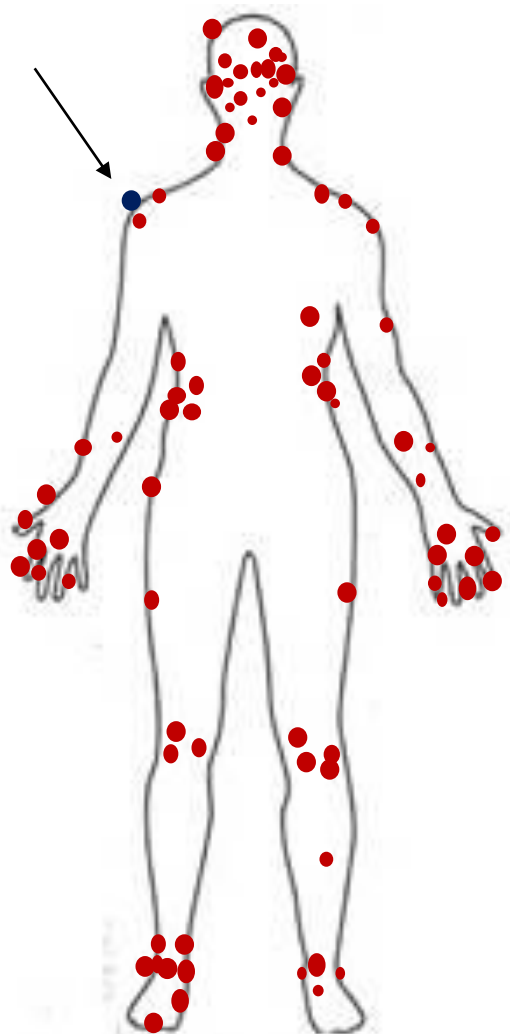
## 5 Year Trend



Incident Date	Incident Type	Organization/ Division	Short Description
11/27/17	First Aid	Processing Hydromet	An employee was trying to separate a blank that between the hook and the lock mechanism of the strong back when his finger was pinched between the bars.
11/28/17	Restricted Duty	Mine Haulage	An employee was conducting a pre-op inspection when he tripped and fell landing on his shoulder.
11/30/17	First Aid	Contractor Townsite	A Sollers Construction employee was bit by a dog.
11/30/17	First Aid	Processing Morenci Concentrator	An employee was washing under the ball mills when he felt irritation on his back.

# Reportable Injuries – Top 5 Injuries

Nature of Injury	Total No. of Injuries		Medical Treatment	Restricted Duty	Lost Time
Sprain/Strain	36	42%	0	23	13
Cut/Laceration	14	16%	14	0	0
Fracture	11	13%	2	3	6
Abrasion	7	8%	7	0	0
Bruise/Contusion	4	5%	0	4	0



- = Last week's injuries
- = Year to date injuries.

Part of Body by Classification of Injury	Total No. of Injuries		Medical Treatment	Restricted Duty	Lost Time
Eye	13	15%	13	0	0
Finger	11	13%	6	5	0
Ankle	10	12%	0	5	5
Shoulder	9	11%	0	8	1
Lower Back	7	8%	0	3	4



# As it stands...

<i><b>Division</b></i>	<i><b>Date of Last Rep. Injury (FMMO)</b></i>	<i><b># of Days w/o Rep. Injury (FMMO)</b></i>	<i><b>Date of Last Rep. Injury (Contractors)</b></i>	<i><b># of Days w/o Rep. Injury (Contractors)</b></i>	<i><b>Date of Last HEHI Event</b></i>	<i><b># of Days w/o a HEHI Event</b></i>
MAINTENANCE SERVICES	9/6/2017	88	4/22/17	225	7/1/2016	511
HYDROMET & CLP	11/15/2017	18	10/11/17	53	6/29/2016	522
LEACHING	2/17/2017	289	7/23/16	498	2/25/2015	951
MORENCI CONCENTRATOR	11/11/2017	22	10/23/17	41	6/6/2017	180
METCALF CONCENTRATOR	11/21/2017	12	10/4/17	60	3/12/2016	642
CRUSH & CONVEY	8/17/2017	108	10/11/17	53	5/18/2017	216
MINE MAINTENANCE	10/9/2017	55	11/22/17	11	3/19/2016	624
FRAGMENTATION/LOADING/SUPPORT	10/12/2017	52	4/19/12	2061	11/22/2017	11
HAULAGE	11/28/2017	5	8/1/2008	3623	11/13/2017	20
RESOURCE MANAGEMENT	10/11/2017	53	7/31/17	125	1/5/2016	698
ADMINISTRATION	5/19/2017	198	6/9/17	177	1/1/2014	1433
MERCANTILE	3/15/2017	263	6/20/17	166	1/1/2014	1433
CONTRACTORS	-	-	-	-	6/7/2017	179

# CONTRACTOR HEALTH AND SAFETY MANUAL

## PART ONE (Section 5.0 Safe Practices)

### 5.10 Construction Safety

- All equipment and materials used in concrete construction and masonry work shall meet the applicable regulatory requirements.
- Employees working more than 6 feet above adjacent working surfaces while placing reinforcing steel, setting or dismantling forms, etc., will use a safety harness with two lanyards/hooks. The standard of 100% fall-protection practices will be followed.



# CONTRACTOR HEALTH AND SAFETY MANUAL

## PART ONE (Section 5.0 Safe Practices)

### 5.10 Construction Safety Cont.

- Rebar shall be capped with steel reinforced impalement protection.
- **Where fall arrest systems are used, ensure there is enough distance to prevent persons from contacting surfaces during a fall.** If not, seek other means of fall protection such as fall restraint, handrail or other guarding.
- The riding of concrete buckets for any purpose shall be prohibited. Working crews shall be kept out from under suspended concrete buckets. **Buckets shall have tag lines, which are a minimum of 6-feet long.**

# CONTRACTOR HEALTH AND SAFETY MANUAL

## PART ONE (Section 5.0 Safe Practices)

### 5.10 Construction Safety Cont.

- Reinforcing mats used as a walkway shall be covered with plywood to provide safe footing.
- Workmen involved in abrasive blasting shall wear approved, properly functioning, supplied air respirators and hoods.
- Concrete workers will be required to wear appropriate shirts, boots, and gloves **appropriately bloused or taped at the ankles and wrists to reduce the danger of burns.**
- All lumber and materials shall be clear of nails and wire. Excess materials shall be removed from the immediate work area. **During form stripping, all nails and snap ties will be pulled.**

# CONTRACTOR HEALTH AND SAFETY MANUAL

## PART ONE (Section 5.0 Safe Practices)

### 5.11 Floor and Wall Openings

- All open-holes in decks and walkways must be guarded (covered), barricaded, or made otherwise inaccessible. If work must be performed and it is infeasible to prevent access to a potential fall hazard through barricading, an attendant must be assigned to prevent accidental exposure by ensuring fall protection is used 100% of the time.



# CONTRACTOR HEALTH AND SAFETY MANUAL

## PART ONE (Section 5.0 Safe Practices)

### 5.11 Floor and Wall Openings

- When a safe work platform has been altered, creating a fall hazard, substantial barriers or guarding, red “danger” flagging, and tagging that displays the nature of the hazard and protective action is required utilizing the FCX – Flagging, Guarding, and Barricading Guideline. Refer to FCX-Working at Heights Policy (FCX-02). FCX Flagging, Guarding, and Barricading Guideline in Part 2 of The Contractor Safety Manual.

# CONTRACTOR HEALTH AND SAFETY MANUAL

## PART ONE (Section 5.0 Safe Practices)

### 5.11.1 Barricading

- Barricading and/or covers shall be removed only after other means of fall protection are in place. Employees installing and/or removing guarding and/or covers shall be protected by alternative fall protection through the entire process. The contractor responsible for the removal of barricading/guarding/covers is responsible for its replacement.



# CONTRACTOR HEALTH AND SAFETY MANUAL

## PART ONE (Section 5.0 Safe Practices)

### 5.11.1 Barricading

- The perimeter, floor and wall opening shall be demarcated with orange, 4-foot high vertical debris nets or an equivalent means to demarcate and identify the hazard. Temporary toe boards shall be installed. When necessary, debris nets shall also be installed.
- No employee, regardless of position, craft or job assignment, shall be allowed in an area that could expose that person to a fall unless correct fall protection procedures are followed.

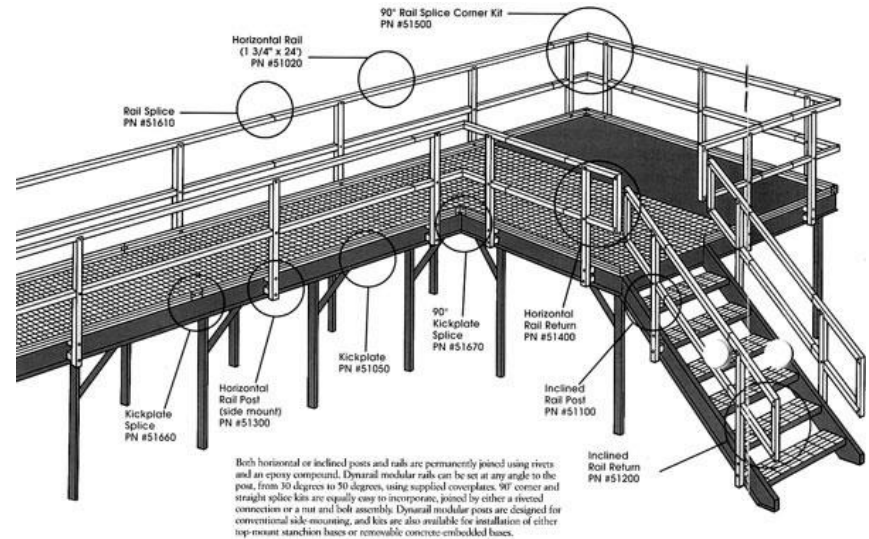


# CONTRACTOR HEALTH AND SAFETY MANUAL

## PART ONE (Section 5.0 Safe Practices)

### 5.11.2 Standard Rails

- A standard railing shall consist of a top rail, intermediate (mid-rail) rail, **4-foot high vertical debris nets and posts** (if toe boards are not present).



# CONTRACTOR HEALTH AND SAFETY MANUAL

## PART ONE (Section 5.0 Safe Practices)

### 5.11.2 Standard Rails

- The top rail shall be approximately 42 inches from the upper surface of the rail to the floor, platform or ramp level. The top rail shall be smooth-surfaced throughout its length and be made of at least 2-inch by 4-inch stock or 3/8-inch cable, tripleclamped wire rope and turnbuckles on all straight runs.

# CONTRACTOR HEALTH AND SAFETY MANUAL

## PART ONE (Section 5.0 Safe Practices)

### 5.11.2 Standard Rails

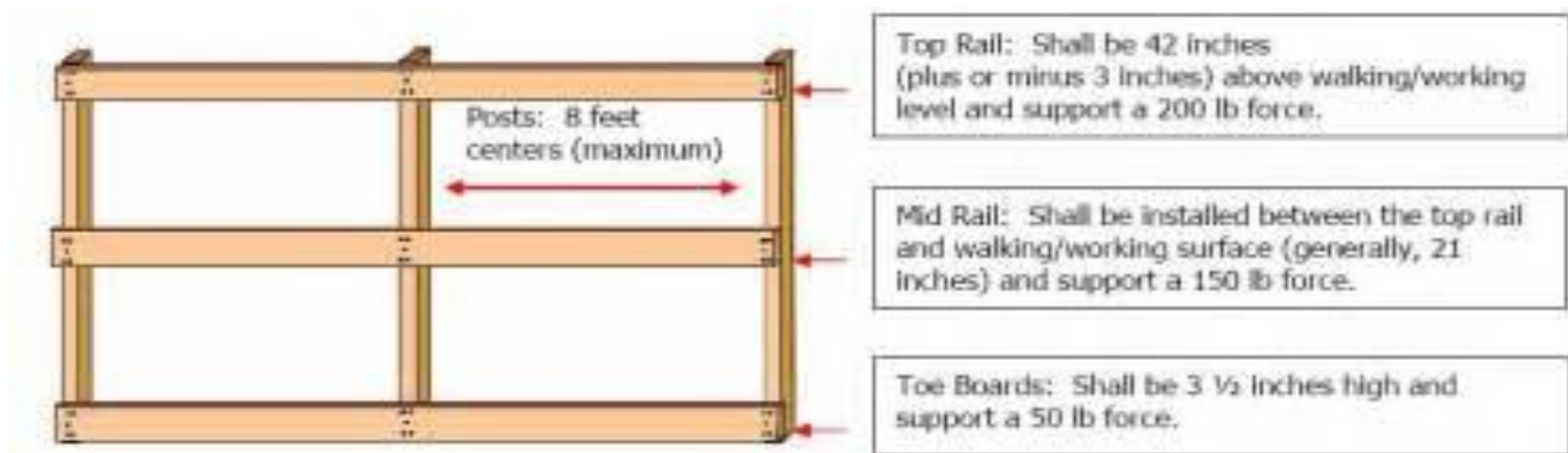
- The mid-rail shall be halfway between the top rail and the floor, runway, platform or ramp. The ends of the rail shall not overhang the terminal posts except when it does not constitute a projection hazard. The mid-rail shall be made of at least 2-inch by 4-inch stock or its equivalent (3/8-inch triple-cable clamped wire rope).
- The toe-board, with 4-inch minimum height, shall be securely fastened in place and have not more than 1/4 - inch gap between it and the floor level where vertical debris nets cannot be installed.

# CONTRACTOR HEALTH AND SAFETY MANUAL

## PART ONE (Section 5.0 Safe Practices)

### 5.11.2 Standard Rails

- Wood railing posts (verticals) shall be made of at least 2-inch by 4-inch stock or its equivalent and be spaced so as not to exceed 8 feet on center.



# CONTRACTOR HEALTH AND SAFETY MANUAL

## PART ONE (Section 5.0 Safe Practices)

### 5.11.2 Standard Rails

- Guardrail systems shall be capable of withstanding, without failure, a force of at least 200 pounds applied within 2 inches (5.1cm) of the top edge, in any outward or downward direction, at any point along the top edge.
- All welding must be inspected and approved by a certified welder.

# CONTRACTOR HEALTH AND SAFETY MANUAL

## PART ONE (Section 5.0 Safe Practices)

### 5.11.3 Stair Railings

A stair railing shall be constructed similarly to a standard railing, but the vertical height shall not be more than 36 inches, nor shall there be less than 34 inches from the top rail to the surface tread in line with the face of the riser at the riser's forward edge. All handrails shall be provided with a minimum clearance of 3 inches between the handrail and any other surface or object.



# CONTRACTOR HEALTH AND SAFETY MANUAL

## PART ONE (Section 5.0 Safe Practices)

### 5.11.4 Covered Floor Openings

Floor opening covers shall be capable of supporting two times the maximum intended load (which includes employees, equipment, and materials that may be imposed in any one square foot area of the cover at any time) and shall be installed as to prevent accidental displacement.

**Covers shall be distinctively marked and anchored.** All floor openings shall be protected by a cover or standard railing with vertical 4-foot-high debris nets.





# CONTRACTOR HEALTH AND SAFETY MANUAL

## PART ONE (Section 5.0 Safe Practices)

### 5.11.5 Procedures during Project Activity

- During the project, stairs shall be provided on all structures exceeding one story in height. Stairways shall be equipped with guardrail systems on leading edges. The guardrails may be temporary in nature so long as they comply with dimensional and strength requirements noted in 5.11.2, above.



# CONTRACTOR HEALTH AND SAFETY MANUAL

## PART ONE (Section 5.0 Safe Practices)

### 5.11.5 Procedures during Project Activity

- All parts of stairways shall be free of hazardous projections. Debris and other loose material shall not be allowed to accumulate on or under stairways. **No flammable or combustible material may be allowed to be stored or accumulate under or beneath any stairway.**
- Permanent steel stairways having hollow pan-type treads and landings that are to be used prior to concrete placement shall have the pans filled with solid material to the level of the edging.

# CONTRACTOR HEALTH AND SAFETY MANUAL

## PART ONE (Section 5.0 Safe Practices)

### 5.11.5 Procedures during Project Activity

- Temporary stairs shall have a landing not less than 30 inches wide, in the direction of travel, for every 12 feet of vertical rise. Wooden treads for temporary service shall be full width.
- Riser height and tread width shall be uniform throughout any flight of stairs.

**Steps are required when a vertical step height is 19 inches or greater.**

# CONTRACTOR HEALTH AND SAFETY MANUAL

## PART ONE (Section 5.0 Safe Practices)

### 5.11.6 Runways and Openings

- Wall openings from which there is a drop shall be physically barricaded. Flagging is not acceptable except as a secondary measure to identify the hazard.



# CONTRACTOR HEALTH AND SAFETY MANUAL

## PART ONE (Section 5.0 Safe Practices)

### 5.12 Fall Protection Requirements

Please refer to the  
Working at Heights Policy.



# CONTRACTOR HEALTH AND SAFETY MANUAL

## PART ONE (Section 5.0 Safe Practices)

### 5.13 Steel Erection

#### ■ 5.13.1 Permanent Flooring

Permanent floors shall be installed as soon as practical following the erection of structural members. At no time shall there be more than four floors, or 48 feet, of unfinished bolting or welding above the foundation or uppermost-secured floor.

# CONTRACTOR HEALTH AND SAFETY MANUAL

## PART ONE (Section 5.0 Safe Practices)

### 5.13.2 Temporary Flooring

- The erection floor shall be solidly planked over its entire surface except for access openings which shall be properly and appropriately guarded at all times.
- Planking shall not be less than 2 inches thick, full size undressed, **and shall be laid tight and secured against movement.** Access openings will be guarded with standard guardrail.

# CONTRACTOR HEALTH AND SAFETY MANUAL

## PART ONE (Section 5.0 Safe Practices)

### 5.13.2 Temporary Flooring

- A safety railing shall be installed, approximately 42 inches high, around the periphery of all temporary planked or decked floors during structural steel erection. This railing shall be at least 3/8-inch cable with at least three cable clamps at each connection with turnbuckles installed in all continuous runs.

# CONTRACTOR HEALTH AND SAFETY MANUAL

## PART ONE (Section 5.0 Safe Practices)

### 5.13.3 General Requirements

- When structural steel is set, each piece shall be secured with no less than two bolts at each connection and drawn up wrench-tight before the load is released.
- Material shall not be hoisted to a structure unless it is ready to be put into place and secured.
- At no time shall an employee be exposed to the potential of a fall without required fall protection.



# CONTRACTOR HEALTH AND SAFETY MANUAL

## PART ONE (Section 5.0 Safe Practices)

### 5.13.3 General Requirements

- When loads are being hoisted, walking under the lift or allowing an employee to be exposed to the swing of the lift is prohibited. No one shall be allowed to ride the load under any circumstances.
- A tag line shall be used to control all loads.
- For the protection of other crafts on the project, barricades and signs shall be posted around the erection area, stating: “Danger Overhead Work in Progress.”
- There will be no “multi-tiering” of loads (Christmas Treeing).



## New Directive

---

**Please try to give advanced notice to me of any HEHI activities that are coming up.**

**The intent is just to be on site when the HEHI activities are taking place to help make assessments of the controls.**

**Thanks in advance for your help on this.**

## 2018 Contractor Monthly Safety Meeting Schedule Freeport Morenci

[illegible]

# Living the Vision

- Positive Recognition
- Living the VISION
- Make Safety Personal
- Who want's next month's Special Presentation?



















