

THE POWER OF COPPER

WELCOME Contactor Safety Meeting

May

FCX
LISTED
NYSE



ICMM
Member

FREEPORT
FOREMOST IN COPPER

fcx.com

Agenda

Safety Share

Environmental Share

Safety Stats

- Trends
- MSHA summary

Event Review

- Open Hole Learnings
- Empire Injuries

Recognition

- AMES Milestone
- BOART

Guest Speaker: Caesar Russell, Fitness and Work Impact

Contractor Headcount



Contractor Headcount

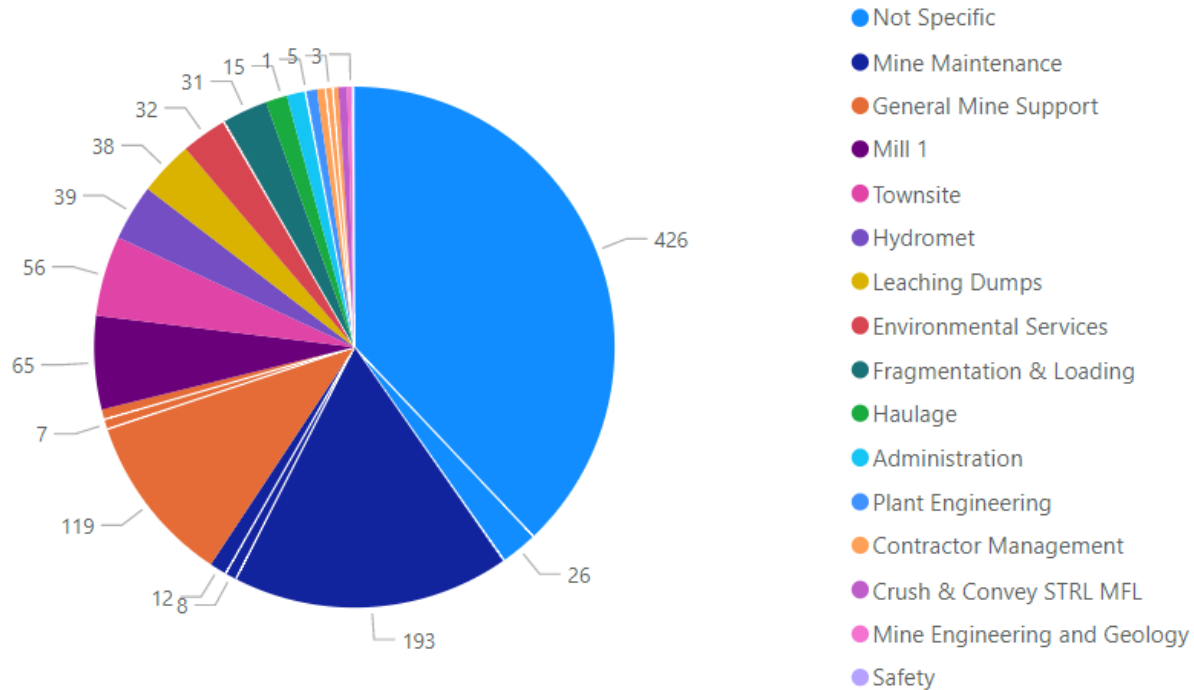
Date

May 2023

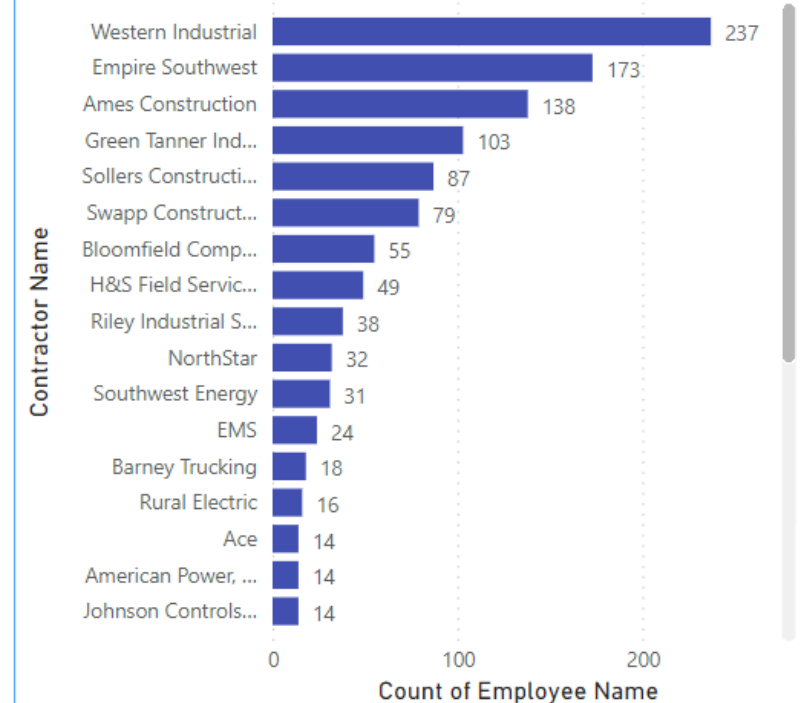
Site

All

Positions Per Department



Total Contractor Employees



Environmental Share Satellite Accumulation Areas

➤ What is a Satellite Accumulation Area (SAA)?

- Any location at or near the point of generation where hazardous wastes initially accumulate, which are under control of the operator of the process generating the waste.

➤ Requirements for SAA:

- Must not exceed 55 gallons of one type of hazardous waste in a working area
- Must be labeled starting with the words "Hazardous Waste" and area marked with the words "Satellite Accumulation Area"
- Container must be closed unless adding or removing waste
- Keep all aerosol cans, batteries, solvent rags, etc. always segregated
- Containers in a SAA can only be moved from SAA to the Central Accumulation area (aka Environmental Yard). They cannot be moved from one SAA to another SAA.



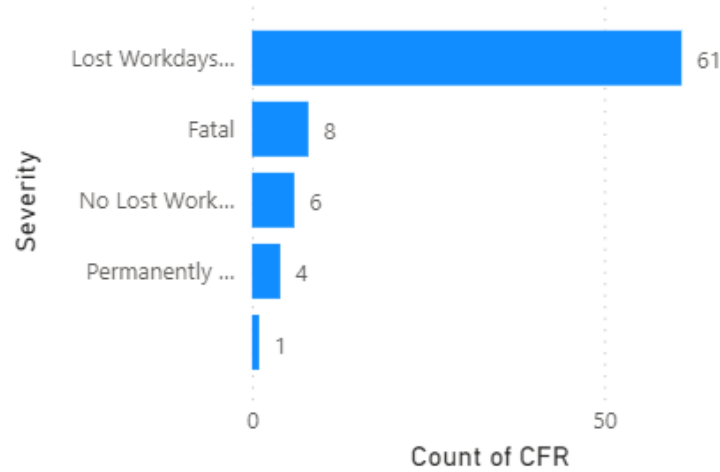
Keep waste streams
always segregated!

THE POWER OF COPPER

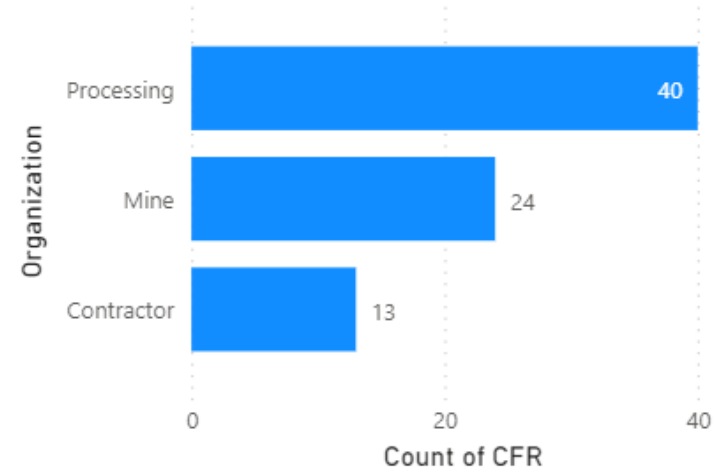
April Safety Results

April/May MSHA Results

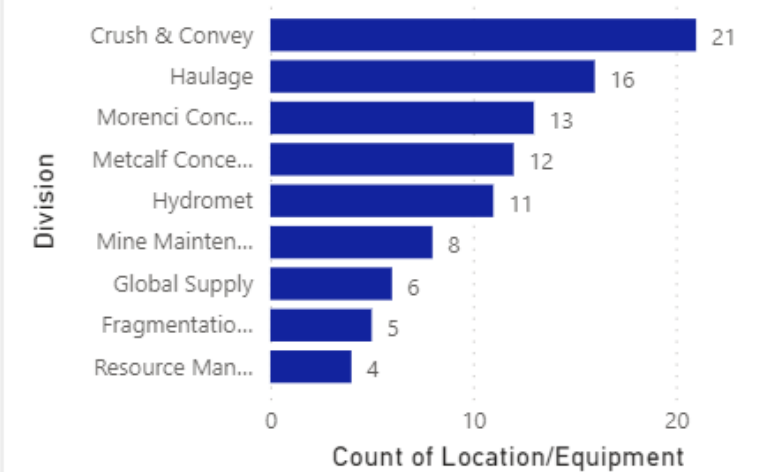
Count of CFR by Severity



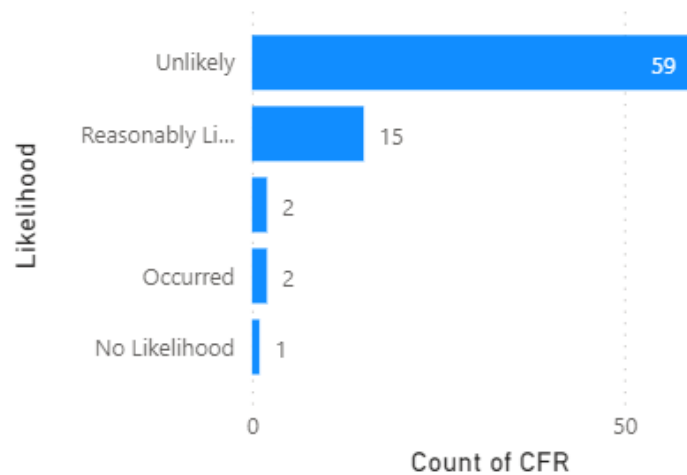
Count of CFR by Organization



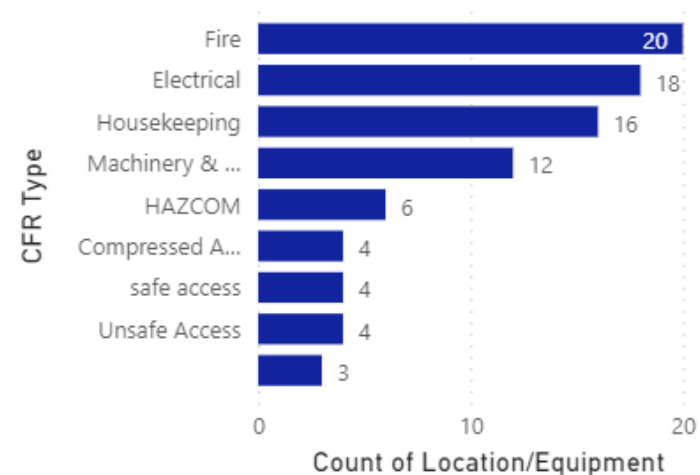
Count of Location/Equipment by Division



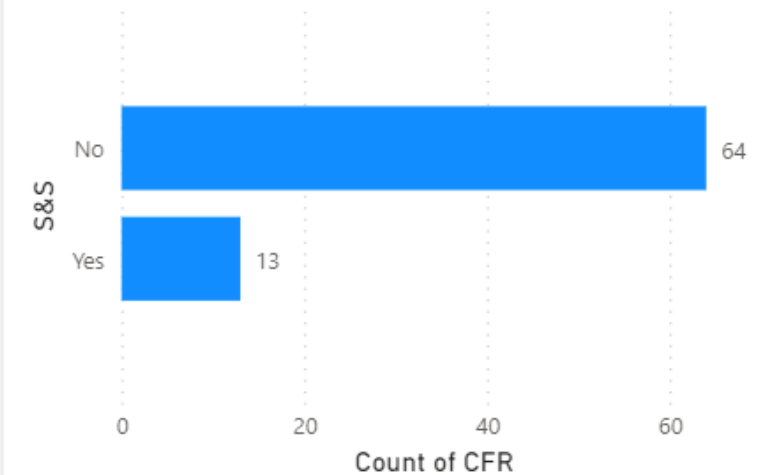
Count of CFR by Likelihood



Count of Location/Equipment by CFR Type



Count of CFR by S&S



12 Month Rolling TRIR

FREEPORT-McMORAN

Fatal Risk Management

(**Information is only displaying FRM missing control data**)

5/1/2022

4/30/2023

Business Function

- ☐ Admin
- ☐ Construction
- ☐ Exploration
- ☐ Maintenance
- ☐ Manufacturing
- ☐ Mining
- ☐ Processing
- ☐ Smelting
- ☐ Support

Sub-Function

- ☐ Acid Plant
- ☐ Blasting
- ☐ Concentrate
- ☐ Concentrate Leach Plant
- ☐ Construction
- ☐ Crush/Convey

195

Forms with Missing Controls

353

Total Missing Controls

2724

Total Verifications

92.8%

Passing Verifications

Fatal Risk

No

| | |
|---|----|
| <input type="checkbox"/> Lifting Operations | 85 |
| <input type="checkbox"/> Vehicle Impact on Person | 60 |
| <input type="checkbox"/> Fall from Heights | 58 |
| <input type="checkbox"/> Falling Objects | 27 |
| <input type="checkbox"/> Vehicle Collision or Rollover | 23 |
| <input type="checkbox"/> Fire | 21 |
| <input type="checkbox"/> Uncontrolled Release of Energy | 18 |
| <input type="checkbox"/> Confined Space | 13 |
| <input type="checkbox"/> Exposure to Electrical Hazards | 12 |
| <input type="checkbox"/> Hazardous Substance - Chronic | 10 |
| <input type="checkbox"/> Drowning | 8 |
| <input type="checkbox"/> Entanglement and Crushing | 8 |

Questions

No

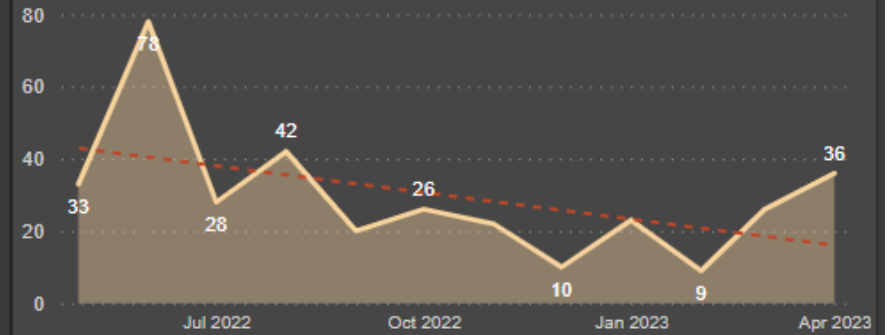
| | |
|---|----|
| Is the lifting operation controlled by barricading? | 17 |
| Do barricaded areas have adequate notification, signage/tags? | 15 |
| Has the team reviewed the rescue plan for this task? Does everyone know and understand the plan? | 12 |
| Have I verified that the barricading has 360 degree coverage to prevent unintended access to the potential drop/loading/unloading zone? | 12 |
| Have I erected barricades as required? | 11 |
| Are the segregation controls suitable for the hazards? | 10 |
| Is signage/demarcation of pedestrian walkways, crossings, and restricted areas in place? | 10 |

Submitter w/ Comments

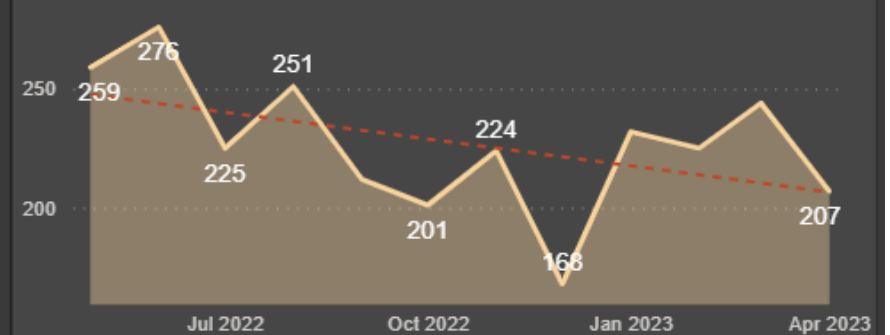
#

| | |
|--|---|
| <input type="checkbox"/> Daniel Pena | 8 |
| <input type="checkbox"/> Kenneth Herrera | 8 |
| <input type="checkbox"/> John Eby | 7 |
| <input type="checkbox"/> Robert Franco | 7 |
| <input type="checkbox"/> Steve Chartier | 5 |
| <input type="checkbox"/> Kale Schaub | 4 |
| <input type="checkbox"/> Sean Dowling | 4 |
| <input type="checkbox"/> Claire Palmer | 3 |
| <input type="checkbox"/> Daniel Leyvas | 3 |
| <input type="checkbox"/> Jeffrey Long | 3 |

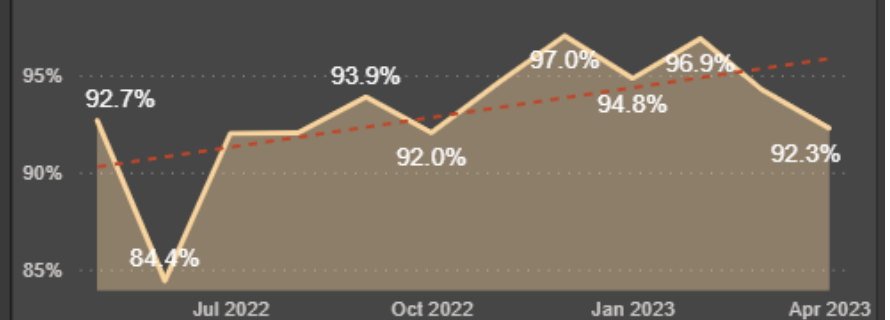
Total Missing Controls



Total FRM Verifications



% Passing Verifications

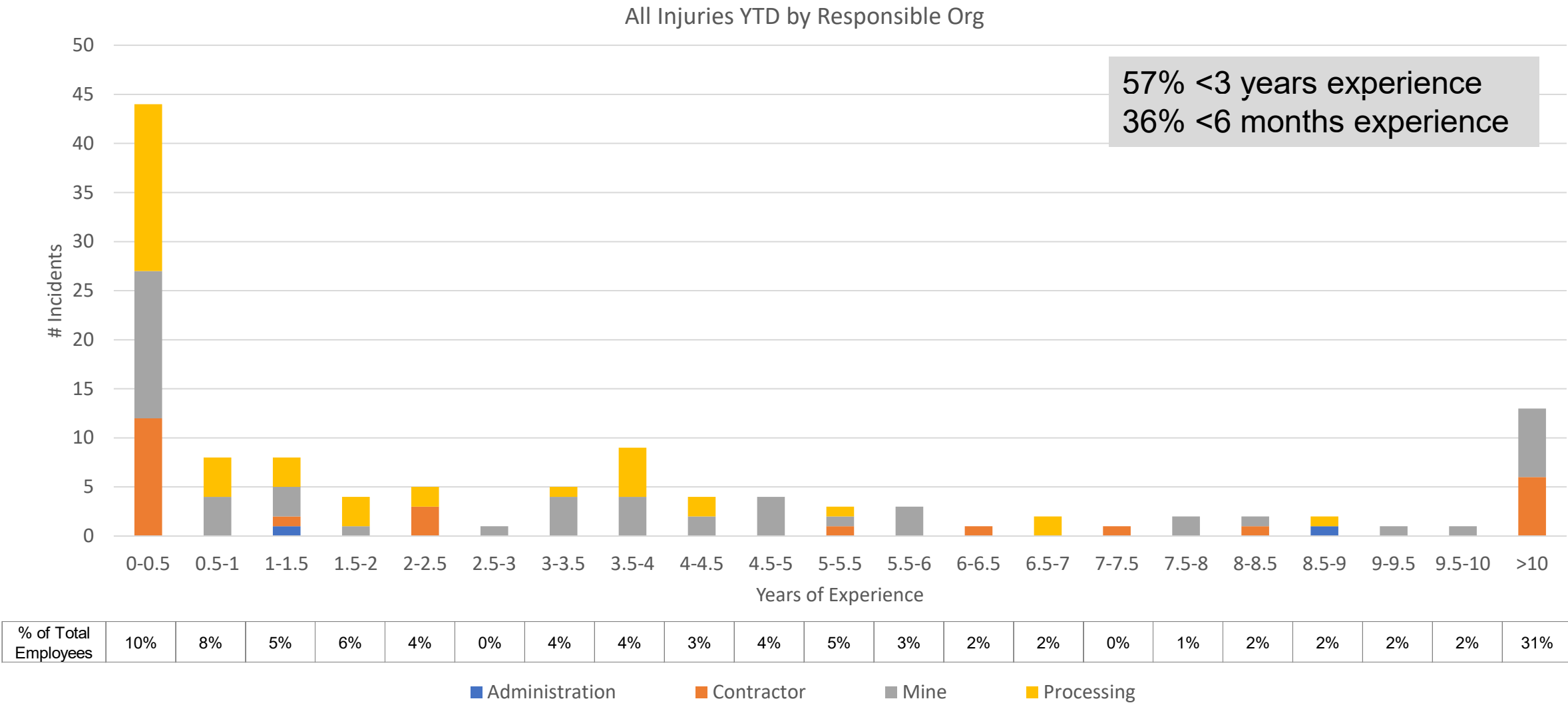


TRIR Opportunities



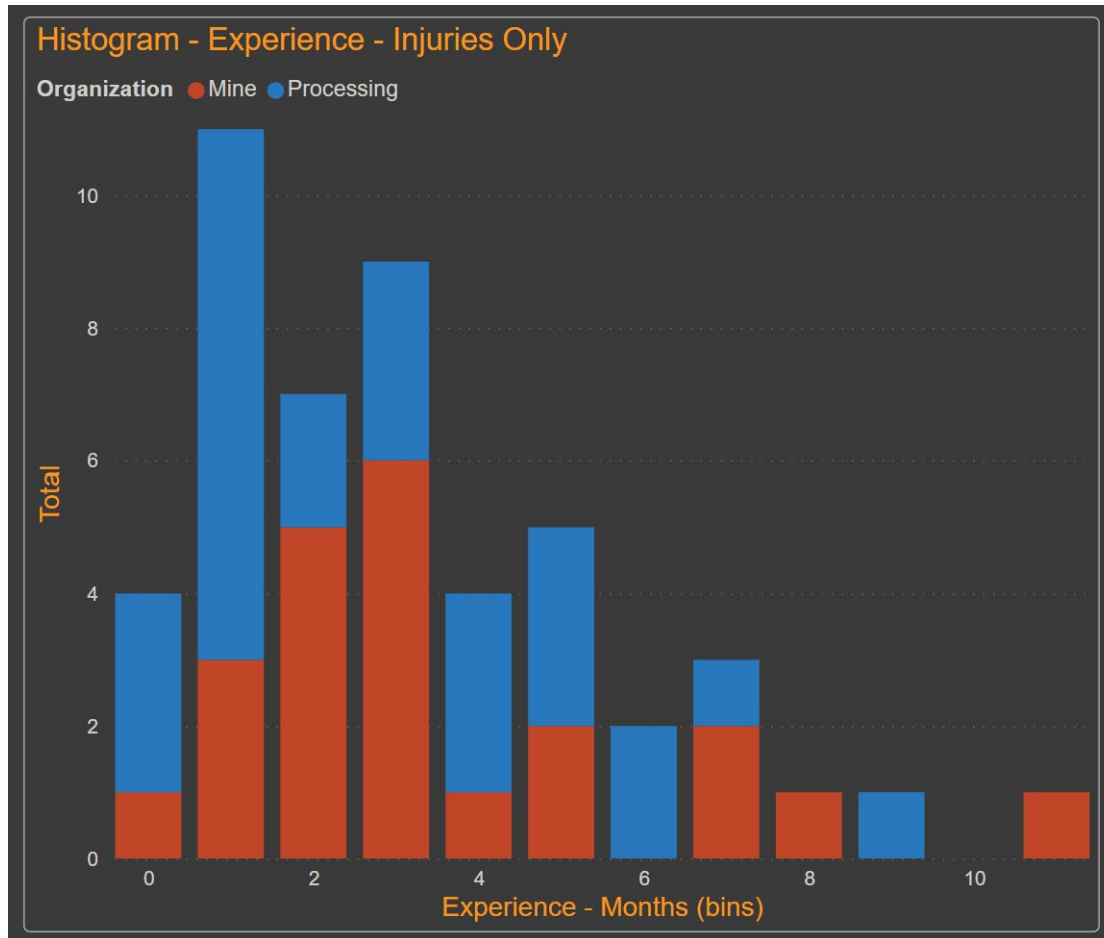
OKR 1.2: Site safety performance delivers a TRIR of 2.65 or lower for Q22023

All Injuries YTD – By Division

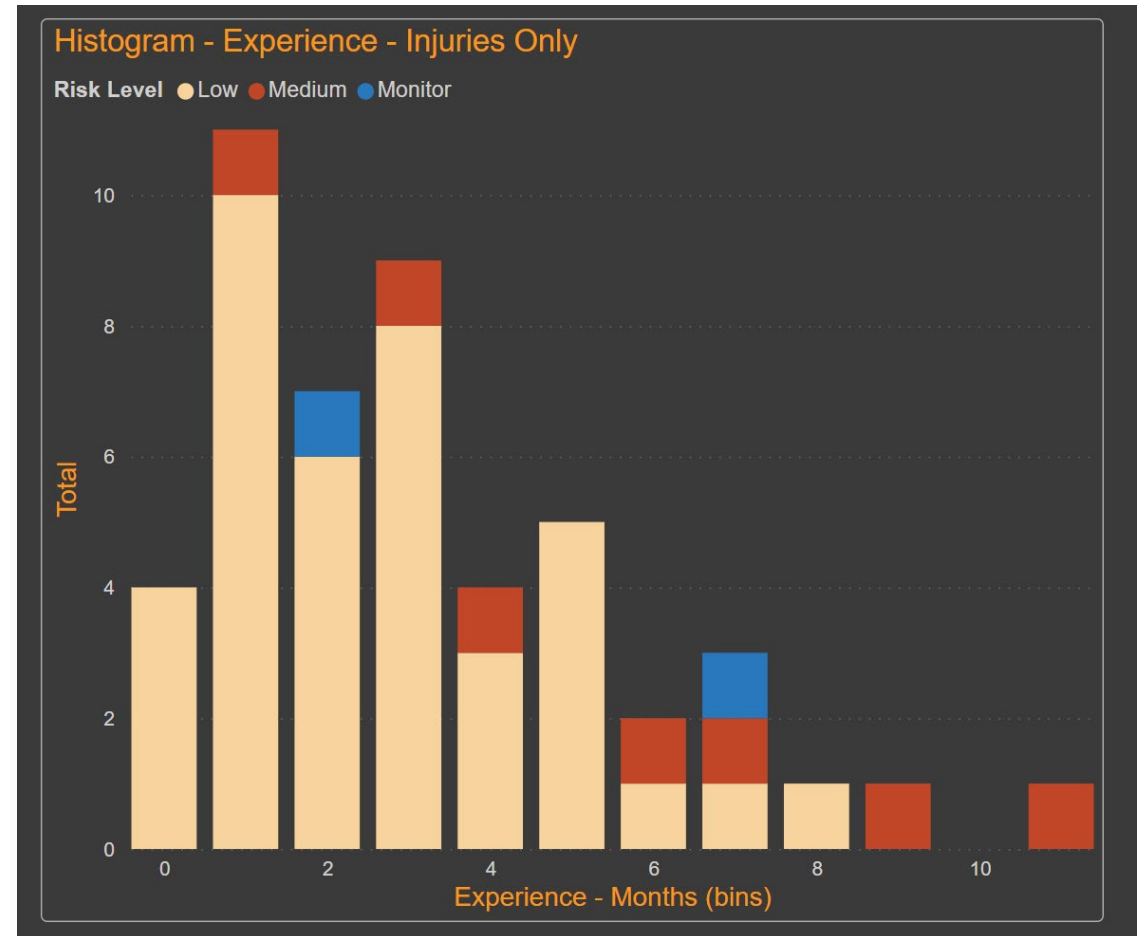


Injuries with <1 Year Experience

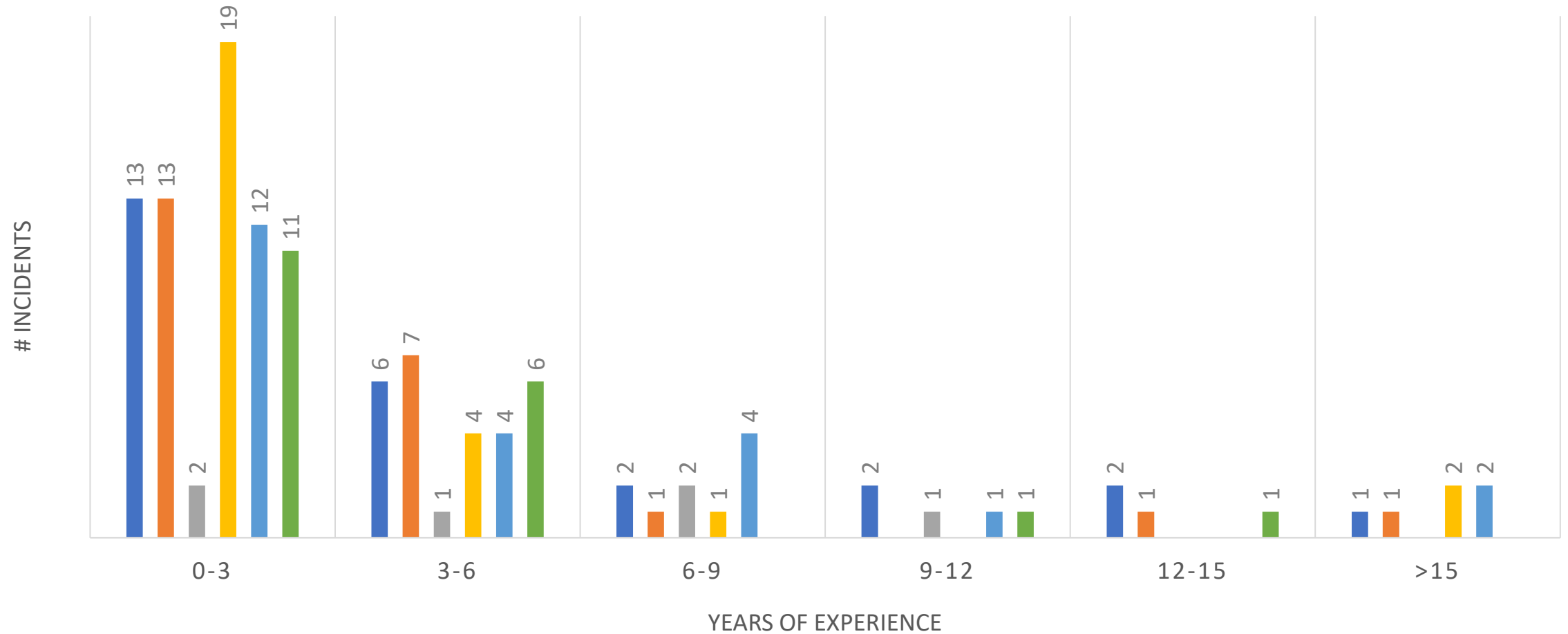
Most in 1st 4 Months



Mostly Low Risk



All Injuries YTD – Top Event Types



■ Contact With/Struck By ■ Exposure To ■ Machine/Tool Use ■ Physical Activity ■ Slips/Trips/Falls ■ Vehicle Events

Insights From Earlier Discussions

- Learning from Pockets of Success
- Red Hat Program / Onboarding
 - Intent vs execution at frontline
- Safety Performance scoreboard, making safety performance visible. Promote healthy competition
 - What message does our recognition programs send?
- Repetitive strain – Labor intensive work adds up
 - Encourage crews to plan physical labor
 - Work smarter not harder
 - Explore opportunities with work groups
- Are we executing our current processes effectively?
 - Tailgates, WPE, JSA's, discipline around PPE, etc...

THE POWER OF COPPER

April Safety Incidents

Open Hole - Event Details

At approximately 10:30 am supervisor told an equipment operator he had to go to CKC's mini-yard to grab steel plate to use as a temporary hole.

The supervisor gave instructions to stay by the manhole until he got back. CKC had barricading and caution tape around the area but left one side exposed. The operator decided to walk over to his work truck 30 yds away to prepare a chain for when the supervisor returned. The chain would be needed to remove the MH Frame & Cover.

While the operator was away getting the chain an FMI Safety officer walked by and notified him that without somebody standing by the manhole there was a potential fall from heights safety violation



Open Hole

Chain retrieved
by Pat

Open Hole - Event Details

After supervisor returned the Manhole Frame & Cover was replaced with a temporary steel plate.

There were three panels installed around the manhole to provide a hard barrier



Open Hole - Fatal Risks and Critical Controls

Fatal Risks

Leading Edge /Open Hole Protection

Is installed edge protection adequate to prevent falls? Note: Includes railings, horizontal lifelines, rat lines, etc.

Am I adequately protected from falling into of off of all openings or leading edges i.e. using barricades, guards or other fall prevention/protection?

Have I inspected the edge protection devices to ensure they are maintained and in good working order?

Learnings

Manholes vary in depth from 2 feet to 8 plus. (routine practices).

The Risk assessment from one side parking lot did not consider the hazard for another area of the parking lot. (did not include manhole removal.)

Do not place yourself in line of fire while correcting an identified hazard

Check for understanding

Actions

Immediate: Proper barricading

Set up Risk Assessment Process. Follow up with audits by Owner.

Conduct FRM review

Develop plan work processes to review prints- and create work plans commensurate to hazards

EMPIRE -



Utility Knife Event



4-26-23

Installing belts on a
4100 shovel

THE POWER OF COPPER

April/May

Recognition

FREEPORT
FOREMOST IN COPPER

AMES Safety Milestone

- 500,000 Thousand Manhours – No Reportable Injuries



BOART Risk Assessment Process

33.11665°N-109.35796°W Elevation: 1340' pulling 5' foot DA rise

HAZARD & RISK MANAGEMENT TOOL

Emergency Response: 918-816-6600
Safety: Kenneth Horvath 918-213-7603 SDS: Quik Trol Gold

ENERGY WHEEL

CONSEQUENCE & RISK TABLE

HIERARCHY OF CONTROLS

THINK - FIELD LEVEL RISK ASSESSMENT

Job Task(s): Drilling operations
Job Number: 118041 Class: FPM Date: 5-2-2023
Risk Rating: Low Moderate High Extreme
Supervisor Approved/Reviewed & Accepted: Justin R.

Permit? YES NO Hot Work Working at Heights
Lock-out Power Line Proximity
Blow Stake Confined Space
Load/Unload Other

| No. | Job Sequence (Basic Job Steps of Task) | Hazards, Risks, Impacts (Think Energy - Use the Wheel) | Necessary Controls To Prevent Injury or Loss (Hierarchy - Elimination, Substitution, Engineering, Administrative, & PPE) |
|-----|---|---|--|
| 1 | Always ensure Critical Risks are incorporated in FLRA | Reference BLY and Client Critical Risks below | Ensure critical risks identified, communicated and controls verified during the FLRA process |
| 2 | Drilling | Rotating rods, high pressure hoses, noise/overhead/ | Barriers/guards, training and task coordination |
| 3 | Pulling/dropping tubes | Suspended Loads/ heavy lifting/ crushing hazard/ line of fire | Interlocks on Rod guards/ Effective communication/ out of line of fire/ Body placement/ |
| 4 | Adding rods | Heavy liftingsuspended loads/ LOF/ Pinch points, metal burrs | Housekeeping/ body placement/ PPE/LOF/ task coordination- 360 awareness |
| 5 | Shaking/blowing tubes | | |
| 6 | Boxing core | | |
| 7 | Mixing mud | | |
| 8 | Water hauls | | |
| 9 | Fueling rig | | |
| 10 | | | |

Does everyone understand the Task? Yes No Do you have the proper Tools & Equipment? Yes No
Is everyone Authorized, Competent & Qualified? Yes No Have you identified potential or stored energy, Line of fire and Fresh Point hazards and controls? Yes No

FATAL / CRITICAL RISK MANAGEMENT

VEHICLES AND DRIVING FALLING OBJECTS PERSONNEL FALL UNCONTAINED RELEASE OF ENERGY THERMAL ENERGY DISEASE



| Job Sequence | Hazards-, Risks-Impacts | Necessary Controls to Prevent Injury |
|--------------------------|---|---|
| Drilling | Rotating rods/ high pressure hoses, noise/overhead/ | Barriers/ guards./ training and task coordinatoin |
| Pulling / Dropping tubes | Suspended Loads/ heavy lifting/ crushing hazard/ line of fire | Interlocks on Rod guards/ Effective communication/ out of line of fire/ Body placement/ |
| Adding rods | Hevy liftingsuspended loads/ LOF/ Pinch points, metal burrs | Housekeeping/ body placement/ PPE/LOF/ task coordination- 360 awareness |

THE POWER OF COPPER

Caesar Russell

World Renowned Fitness Expert

FCX
LISTED
NYSE



ICMM
Member

FREEPORT
FOREMOST IN COPPER

fcx.com

All this to enjoy and appreciate life!

THE POWER OF
COPPER



THE POWER OF COPPER

Contractor Engagement Team Update

Contractor Engagement Team

Working in close collaboration with our Contractors to ensure we are collectively focused on:

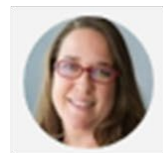
Guiding Light: Right contractor, right time, right skills, performing high quality standards safely

Safety: Ensuring the contractors have been trained appropriately and have the right leadership and safety oversight to perform safely

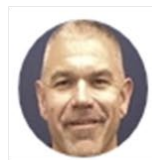
Contractor Management: Ensuring accountability with contractors on safety, consistency, quality, accuracy with performance management tools to do so



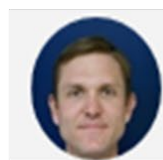
Bobby Pollock
Project Owner



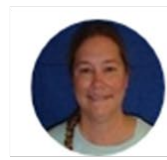
Cindy Barber
Admin Projects



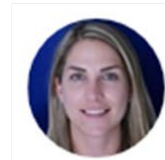
Ryan Henry
OI Support



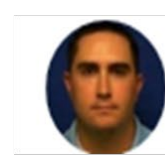
Scott Brack
OI Support



Jill Schultz
H&S Projects



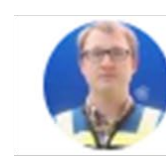
Dana Wise
H&S Ops



Will Brown
GSC Ops



Steve Harris
GSC Projects



Ryan Gab
Planning

Request for Feedback

<https://forms.office.com/r/dF1CRQCBbP>

