

Freeport McMoRan  
Morenci

Escort Points

## Contact Numbers:

- Emergency # 928-865-6600
- Mine Gate # 928-865-7931
- Mine Gate Mobile # 928-215-5443
- Safety on Call # 328-965-6605



**Escort Point 1                      Main Warehouse**  
**33.05392, -109.34296**

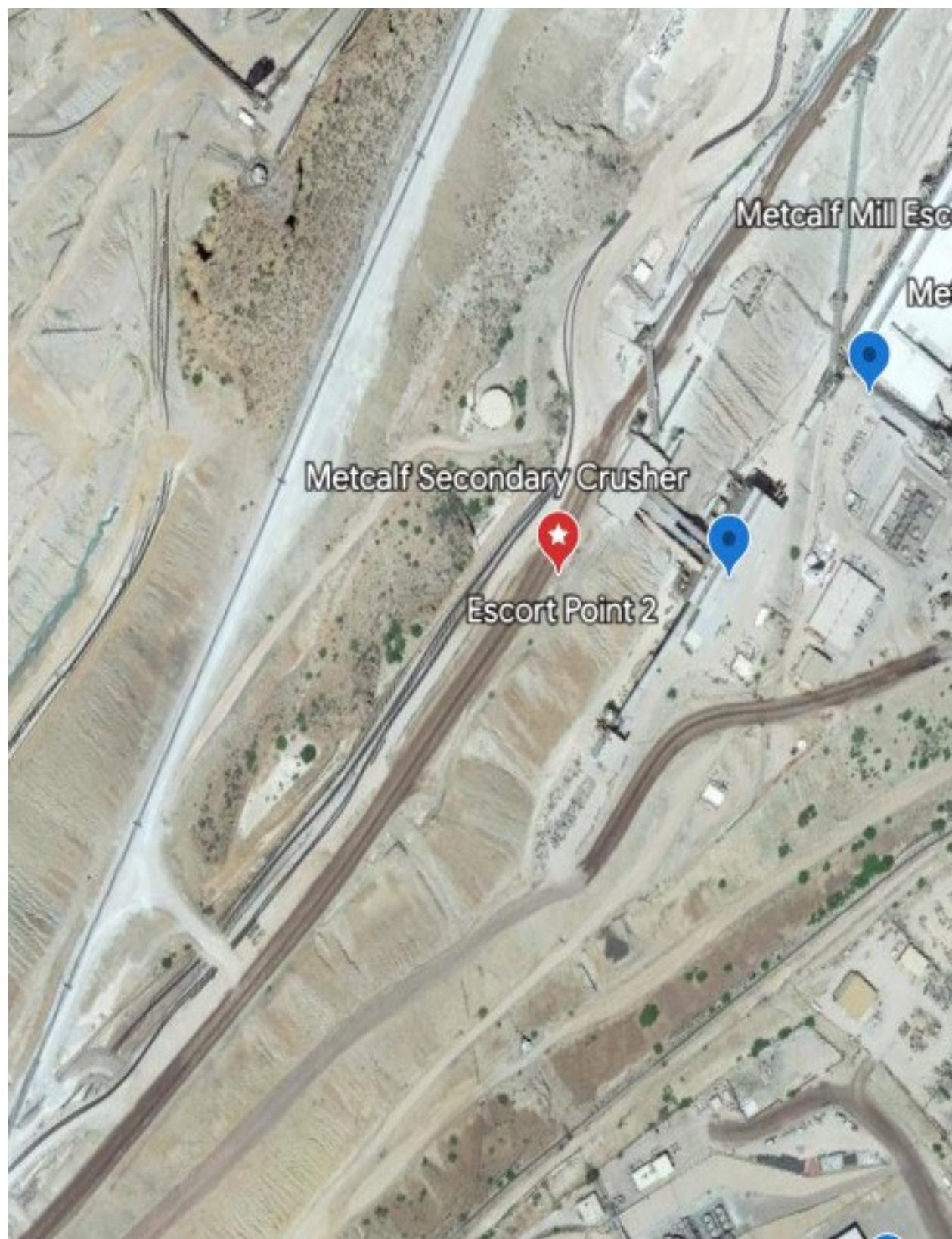




**Escort Point 2**

**4500 Level Above Metcalf Secondary Crusher**

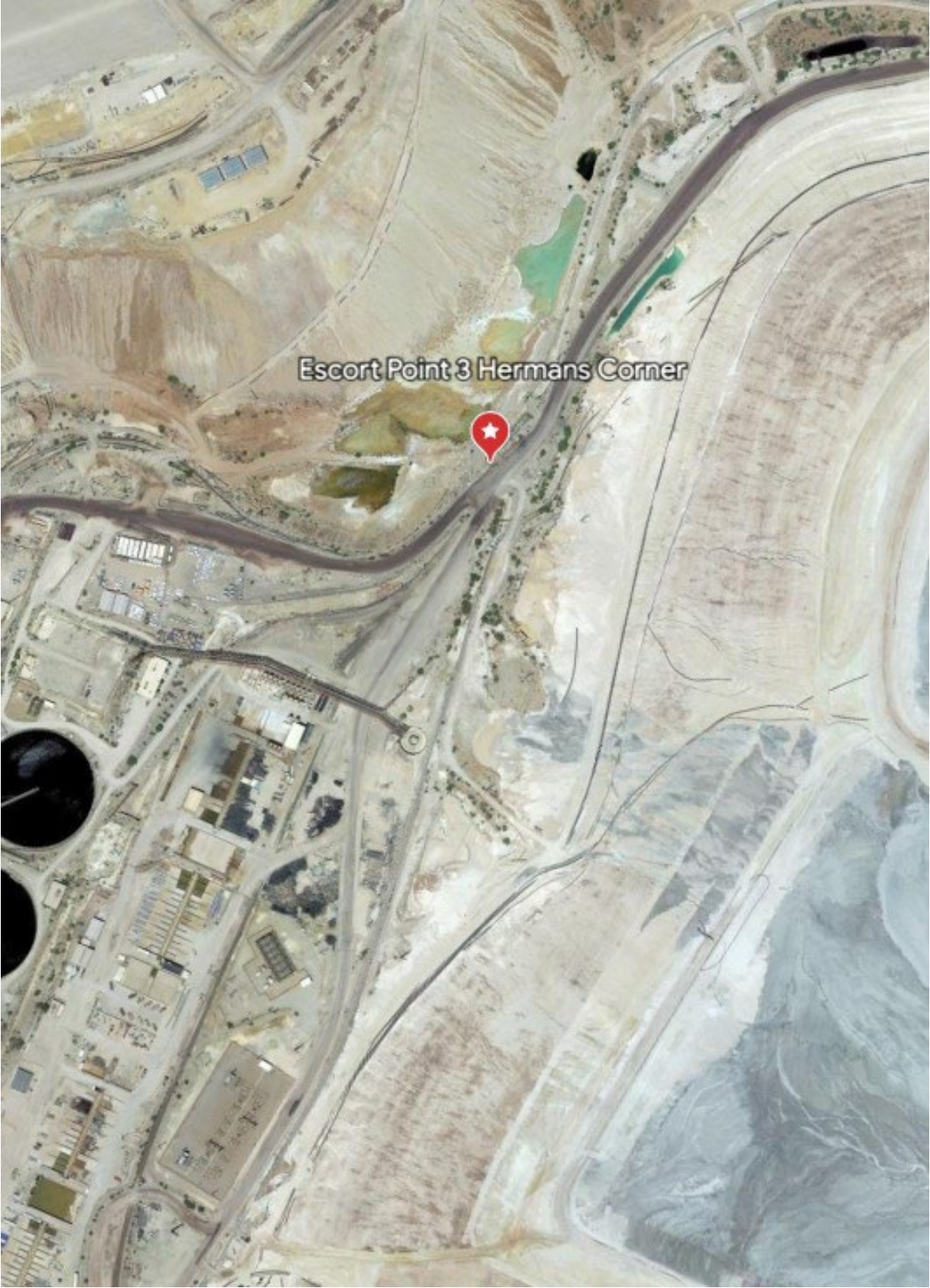
**33.05458, -109.35001**





**Escort Point 3**  
**33.04018, -109.35235**

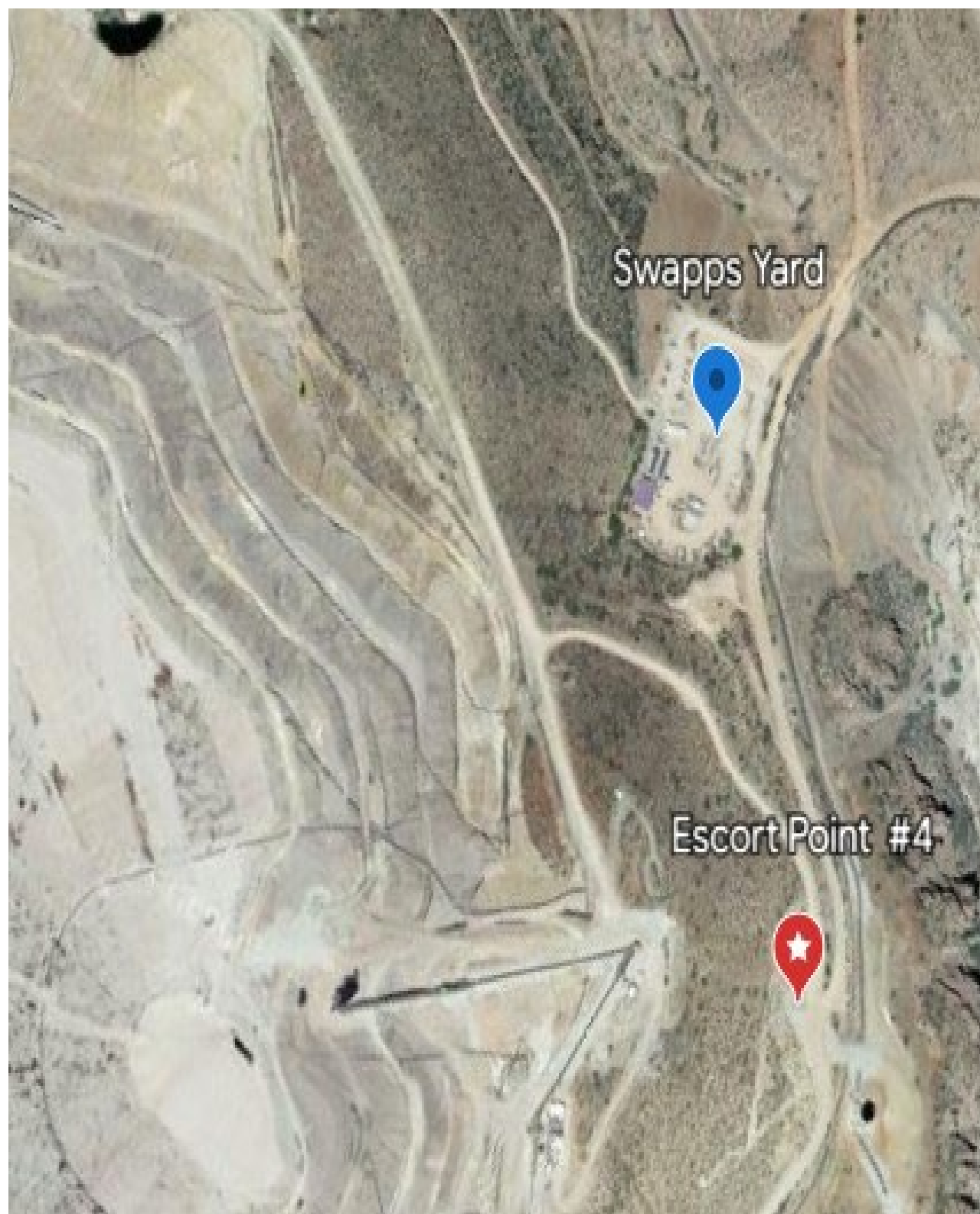
**Herman's Corner**





**Escort Point 4**  
**33.06768, -109.35164**

**By Northwest MFL Cross over near**  
**Swapp's Yard**

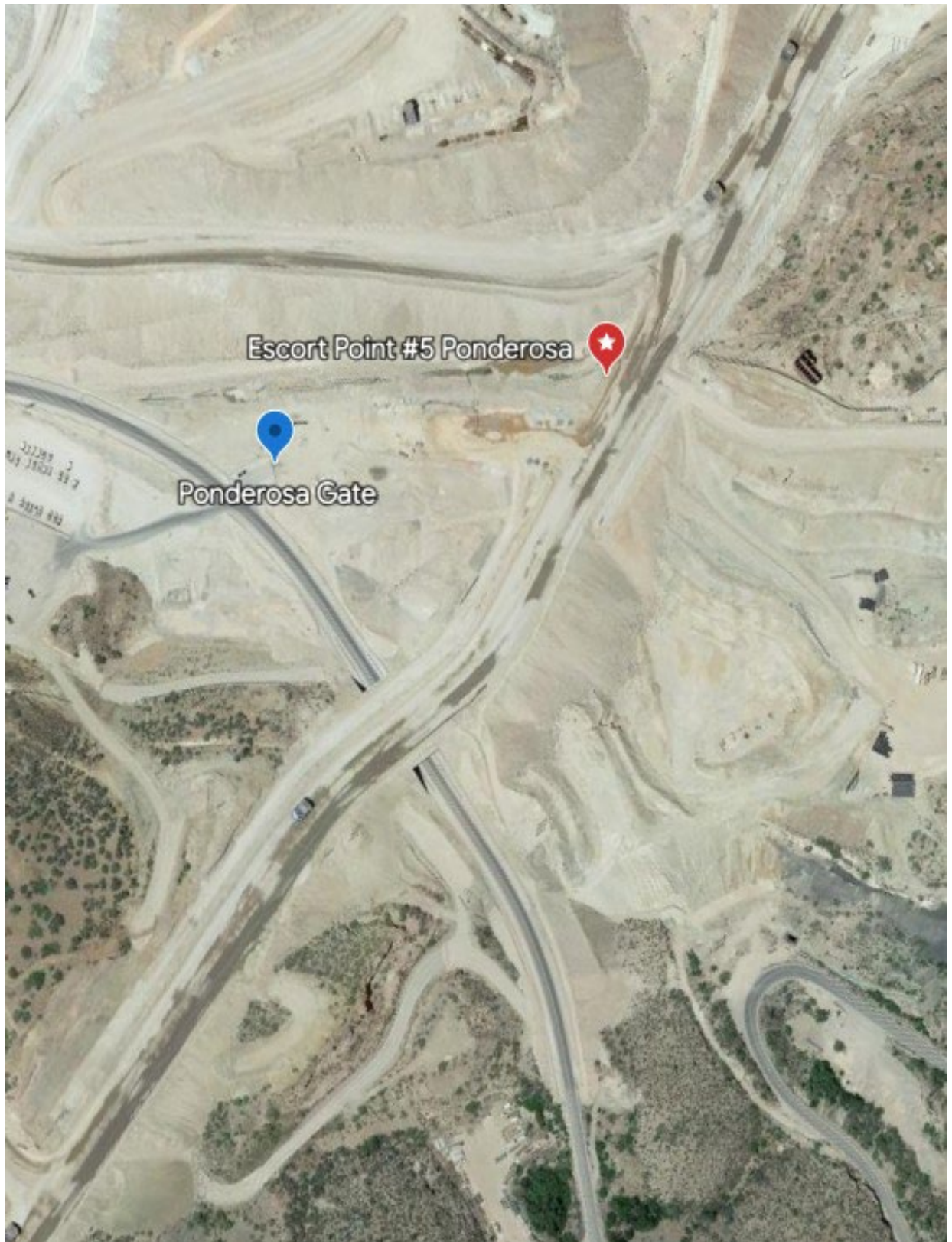




**Escort Point 5**

**Ponderosa Gate**

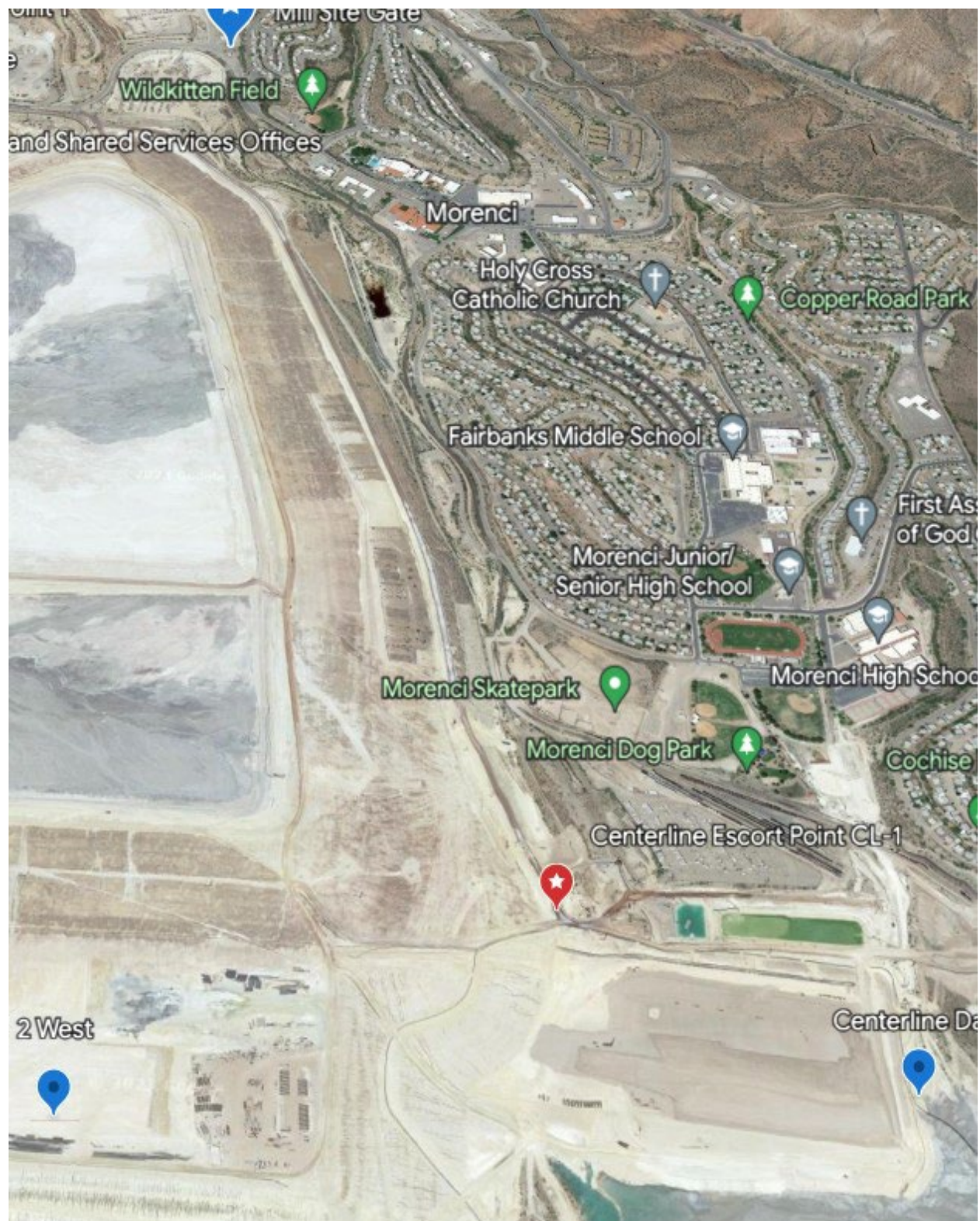
**33.07692, -109.364105**





**Centerline Escort Point CL1**  
**33.03358, -109.32772**

**Tailings Road by Columbine Gate**





**ETPS Escort Point**  
**33.02971, -109.35069**

**Next to ETPS Pump Station**





**In Pit Crusher Escort Point**  
**33.08147, -109.34949**

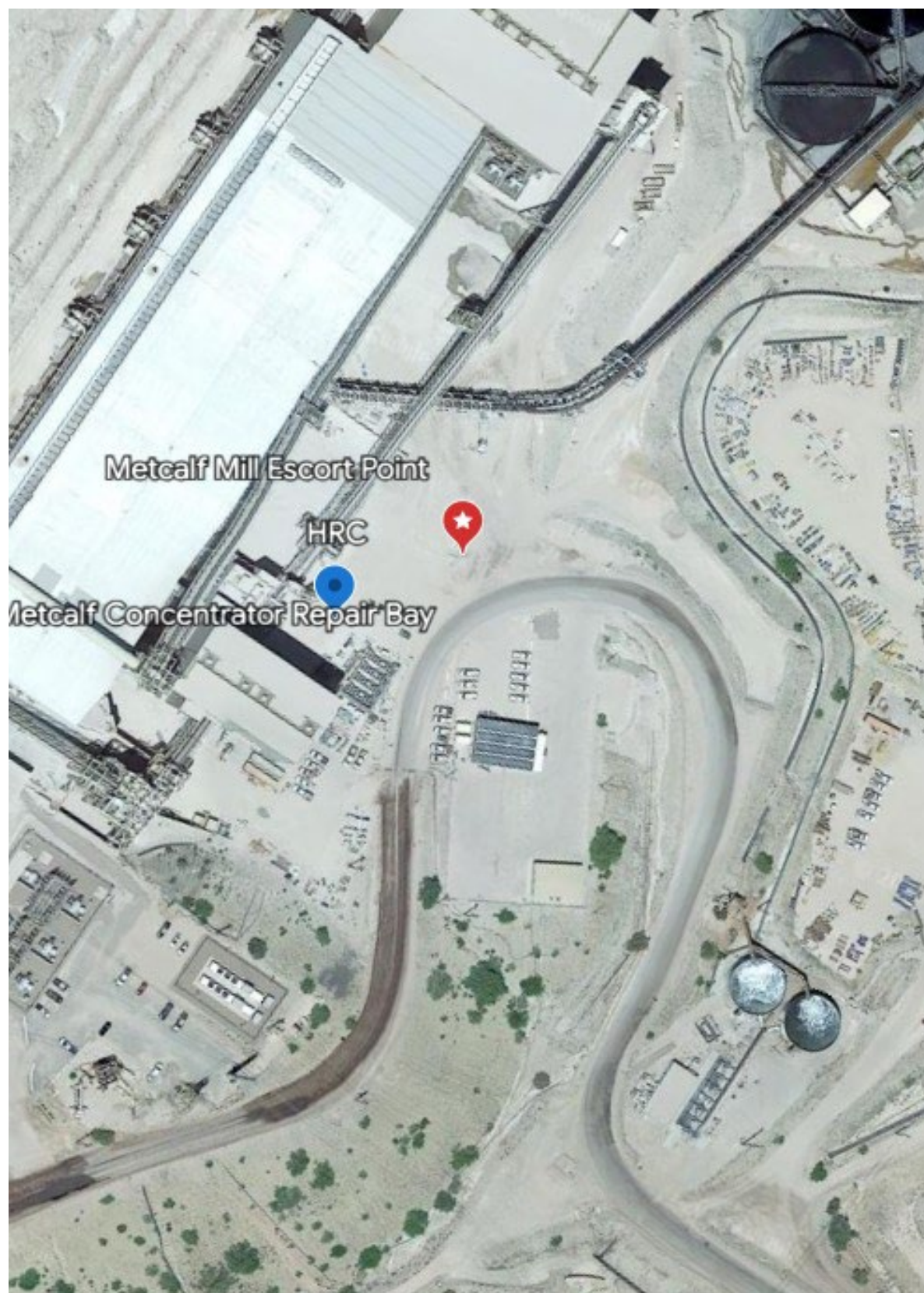
**Near the Tunnel for P-6**





**Metcalf Concentrator  
33.05703, -109.34690**

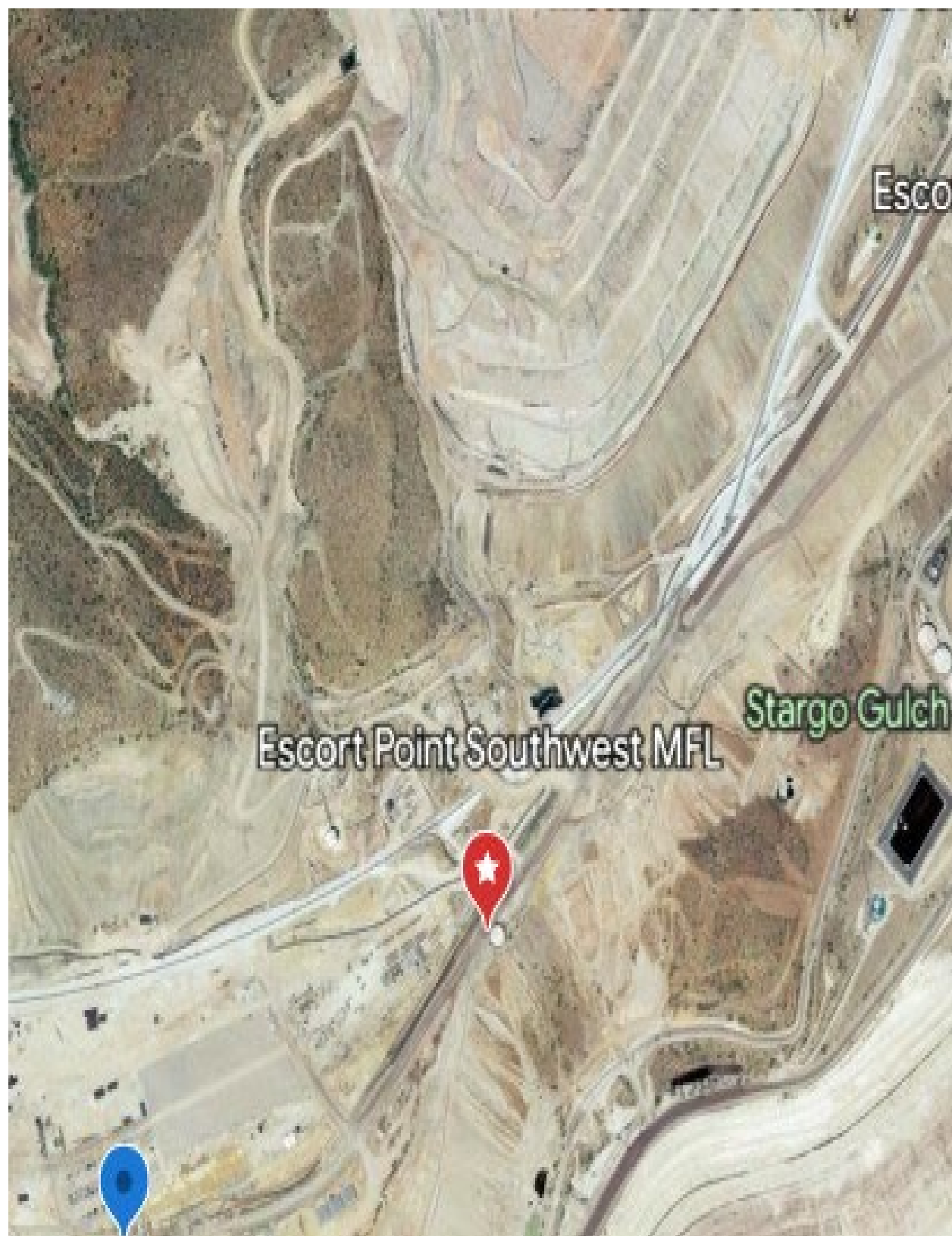
**In Front of Metcalf Concentrator next to  
HRC**





**SouthWest MFL**  
**33.04236, -109.36322**

**Next to Water Tank on 4500 Level**





**Morenci Canyon Escort Point      4500 Level above Morenci Mill**  
**33.06795, -109.34636**





**Morenci Concentrator C-1**  
**33.06737, -109.34374**

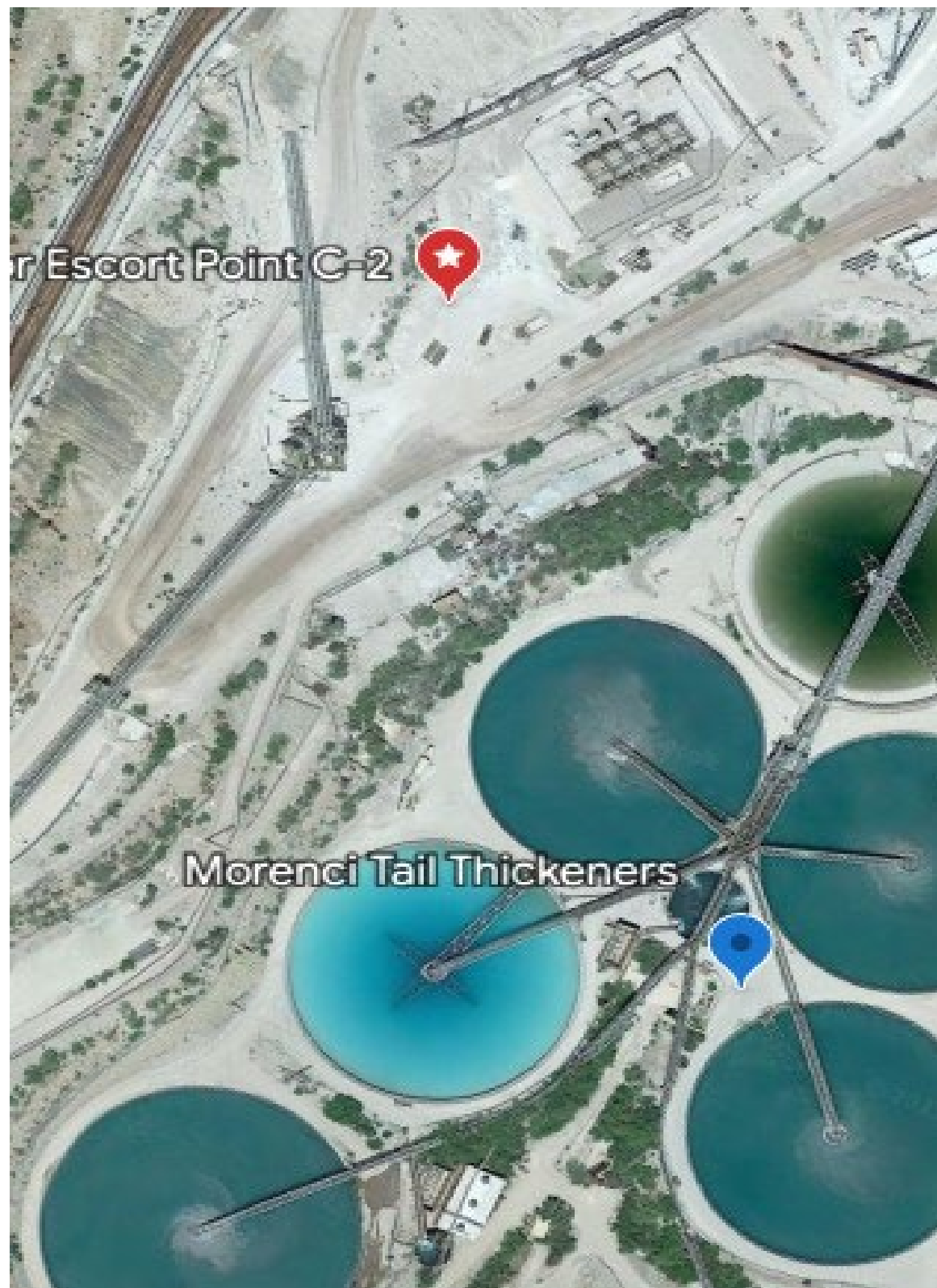
**Front of Morenci Concentrator**





**Morenci Concentrator C-2**  
**33.06553, -109.34599**

**Switch Back below Morenci West**  
**Repair Bay**

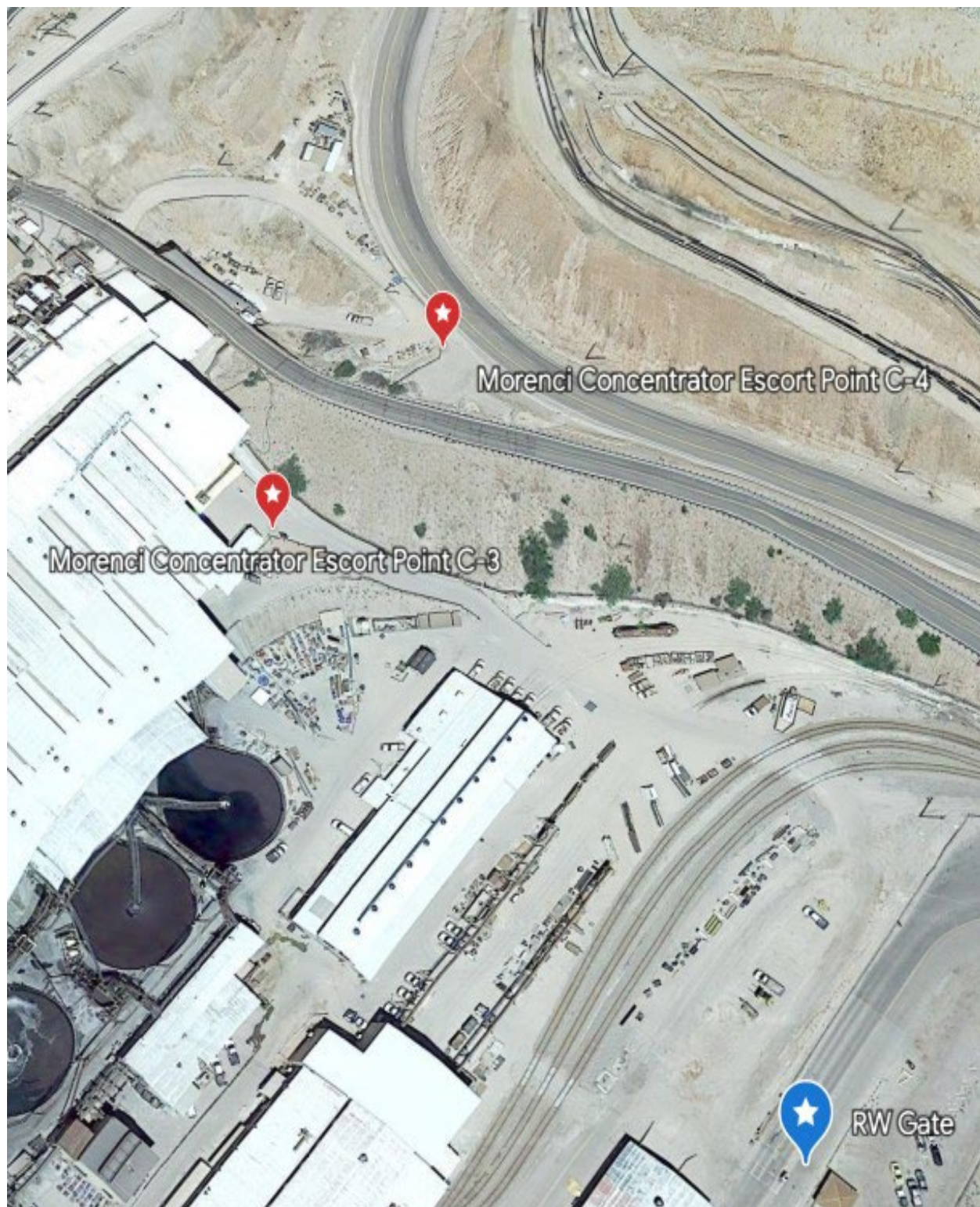


Morenci Tail Thickeners



**Morenci Concentrator C-3**  
**33.06936, -109.34211**

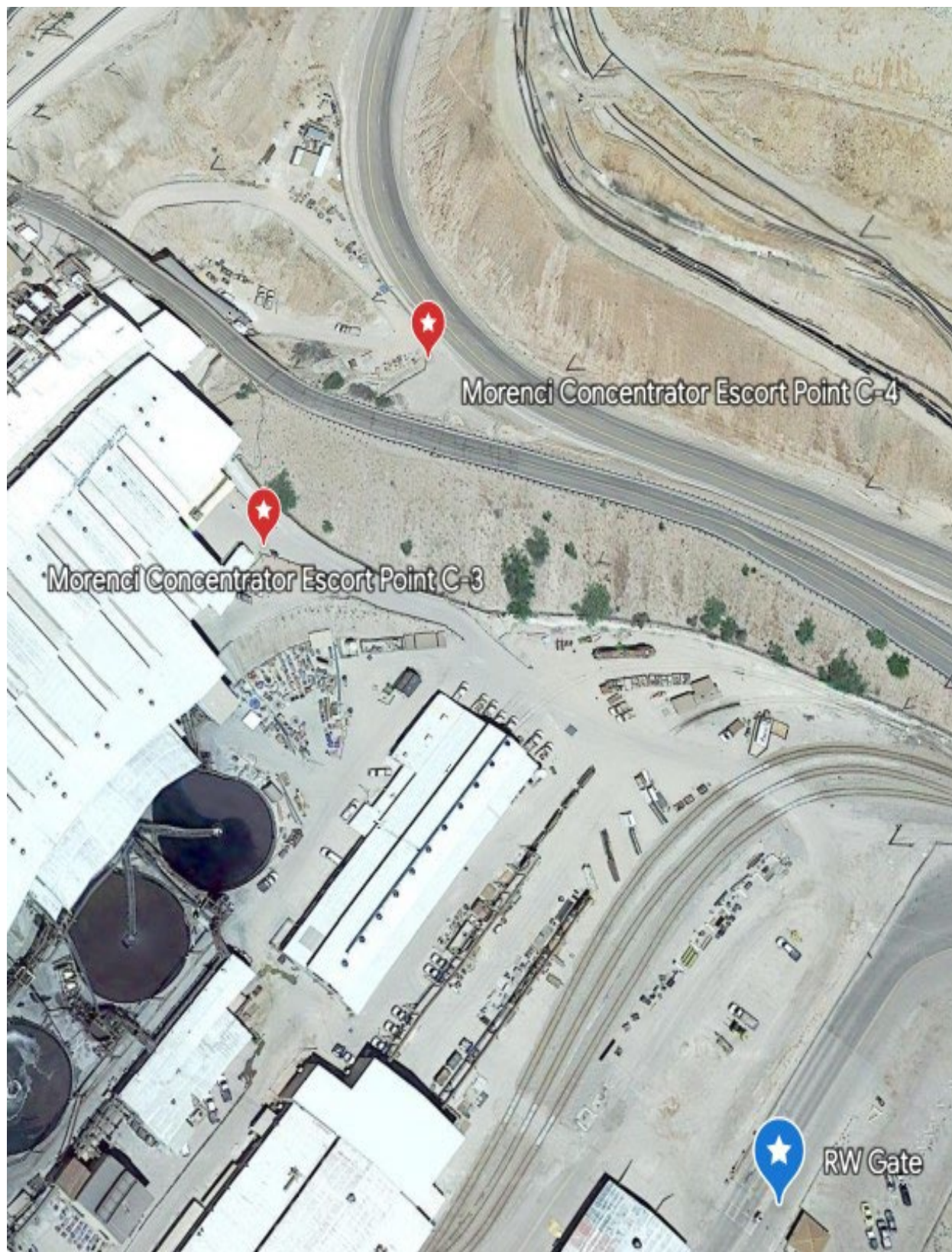
**Top of Ramp Behind Locomotive**  
**Shop**





**Morenci Concentrator C-4**  
**33.06978, -109.34171**

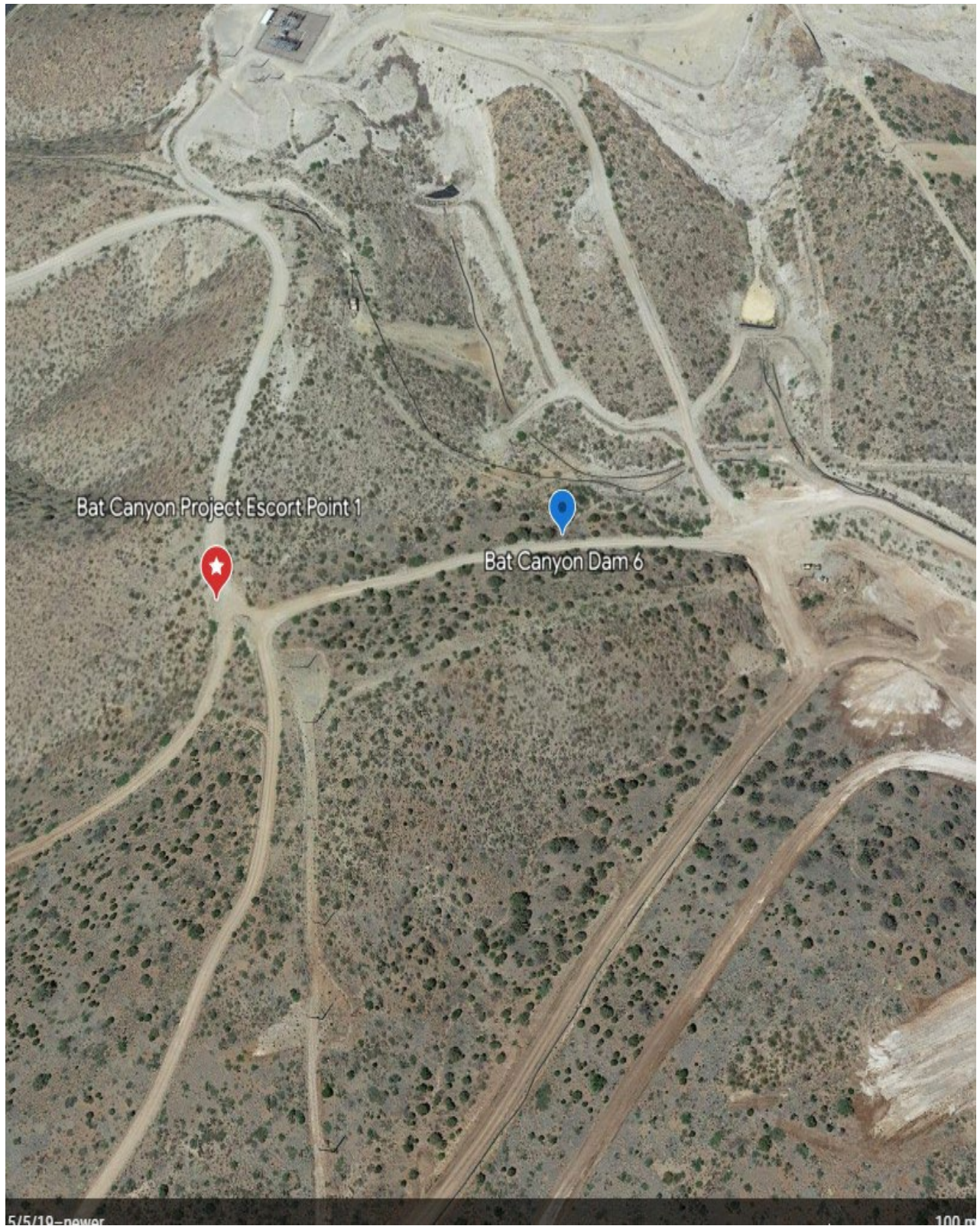
**On Road going to Mine Gate**





**Bat Canyon Project Escort Point 1**  
**33.02553, -109.38462**

**Behind Stargo past Dam 6**





**Bat Canyon Project Escort Point 2**  
**33.04048, -109.39322**





**Bat Canyon Project Escort Point 3**  
**33.04048, -109.39322**

Bat Canyon Project Escort Point 2



t Escort Point 3 Heli Pad





**Lower Eagle Creek Escort Point 1**  
**33.07225, -109.37834**

**On Lower Eagle Creek Road just  
past tunnel by Corrals**





**Lower Eagle Creek Escort Point 2**  
**33.06686, -109.41144**

**On Lower Eagle Creek Road**





**Lower Eagle Creek Escort Point 3**  
**Possible Landing Pad**  
**33.05793, -109.42130**

**On Lower Eagle Creek Road**





**Lower Eagle Sub-Station/Landing Pad**  
**33.05920, -109.43782**

