

# ENVIRONMENTAL MONTHLY GREEN SHARE



## Morenci Air Share



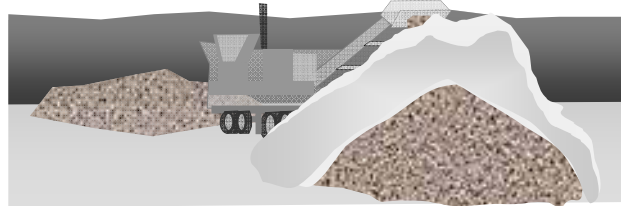
### Air-Related Items to Look for During Inspections

#### Modifications to Emission Sources

- Under Arizona's air permit program, a modification is a physical change or a change in the method of operation.
- It is imperative that the Environmental Services Department is notified regarding all proposed or planned modifications. Furthermore, if a new emission source is discovered during a routine inspection, Environmental Services must be notified immediately.

- Potential new sources include:

- Compressor, Generator or Pump Engines
- Mobile Screening Plants and Grizzlies

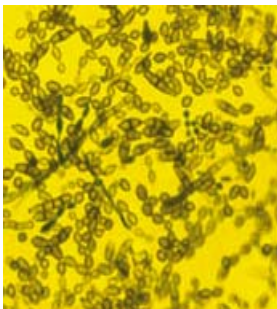


#### Molds – What you need to know

Mold is a fungus that is found virtually everywhere that forms and spreads on damp surfaces

Molds produce allergens, irritants, and in some cases, toxins that may cause reactions in humans. The types and severity of symptoms depend, in part, on the types of mold present, the extent of an individual's exposure, the ages of the individuals, and their existing sensitivities or allergies.

Mold growing in buildings indicates a problem with moisture or humidity



#### Mold Prevention and Control:

- During inspections, keep an eye out for evidence of dampness and take the appropriate steps to identify and correct the causes of any dampness problems found.
- The key to mold control is moisture control. Dry out any porous building materials that are moisture-damaged or show evidence of visible mold growth. Damp or wet building materials should be dried within 48 hours.
- If mold is located, the source of moisture should be determined and the necessary repairs made.

#### Renovation & Demolition (BMP 301)

If renovation or demolition work is discovered during a routine audit, find out immediately if the proper notifications have been made. Environmental Services must be notified via e-mail at least thirty (30) days before any renovation or demolition work is scheduled to begin.

Facilities undergoing renovation or demolition must be thoroughly inspected (and potentially sampled) by a representative of the Environmental Services Department for asbestos containing material and regulated asbestos containing material (RACM) prior to the start of work.

