

# THE POWER OF COPPER

## WELCOME

## January 2024

Contractor Safety Meeting

FCX  
LISTED  
NYSE



ICMM  
Member



*Morenci Mine*

**FREEPORT**  
FOREMOST IN COPPER

fcx.com

# Agenda

- Environmental Share
- Safety Share
- Event review
  - Local
  - Corporate Reports
- MSHA
- Open discussion
  - What was biggest safety impact to your organization
  - What are your plans to address them

# Weather Forecast

We Are Morenci.  
We Are Freeport.

BUILDING OUR FUTURE  
THROUGH THE STRENGTH  
OF OUR PEOPLE

LIVING OUR  
FREEPORT EDGE



## MORENCI • Info4U

### *Colder Temperatures Are Here!*



Winter weather is in the forecast for the next few days, with temperatures expected to dip *below freezing*.

Below are a few reminders to help you be prepared and stay safe:

- Bring your animals inside at night.
- Safeguard exposed pipes by allowing a slow drip to prevent freezing overnight, but remember to turn off the water during the day.
- Roads may be slippery, so drive with caution and give yourself extra time.
- Check your windshield wipers since you probably have not used them in recent months.

By taking these precautions, you'll be better prepared to navigate the upcoming chilly days. Stay safe and warm!



# Environmental Share

## Cultural Heritage & Archeological Sites

**Freeport-McMoRan Morenci works diligently to identify and preserve Native American Cultural Sites found on FMMI property.**

### What is a cultural heritage site?

A cultural heritage site is an area containing ancient artifacts indicating the area was once inhabited by native peoples either permanently or temporarily.

### Why is Cultural Site Preservation Important?

FMI and Morenci have partnered with local Native American tribes in a commitment to honor, protect, and preserve the rich Native American history and heritage that shaped Arizona and the Morenci mining region.

### What is your role/responsibility?

- Do not enter any identified cultural sites or environmentally restricted areas.
- Submit a Management of Change (MOC) on all projects to ensure Environmental review and prevention of cultural heritage site disturbance.
- When working or operating equipment in an undisturbed area, look out for artifacts (e.g. projectile points, obsidian flakes, stone tools, etc.)
- If you believe you've found a potential cultural heritage site, stop the job immediately and notify Environmental. DO NOT remove any items from the site.

**With questions regarding Cultural Heritage & Archeological Sites,  
Please call Environmental at 928-865-6000**

January 2024

# Environmental Talking Points



## Morenci Mine ISO14001 Talking Points **2024**

### Environmental Policy Keypoints

- Climate
- Biodiversity
- Indigenous Peoples
- Environmental Justice

### Environmental Significant Risks (Aspects/Impacts)



Catastrophic  
Release to  
Surface Waters



Catastrophic or  
Chronic Release  
to Groundwater



Air Releases



Improper  
Material/Waste  
Management



Wildlife  
Mortalities

# Environmental Talking Points

## Site Environmental Objectives (Goals)

- Employee Development & Enrichment
- Waste Minimization & Pollution Prevention
- Bring Environmental Social and Governance to the forefront of Environmental Services

### Morenci Environmental Spill Hotline Number:

928-865-SPIL(7745)







### Morenci Environmental Office Number:

928-865-6000

**For Chemical Approvals or to submit SDS's for review please  
use Sphera Comply Plus**

<https://fcx.complyplus.com/MVC/Security/Login?returnURL=/MVC>

# Changes & Impacts to FCX

	 Description	 Changes/Impacts	 Value
 <b>Systems</b>	<ul style="list-style-type: none"> <li>› Ariba</li> <li>› CAS</li> <li>› ISNetworld</li> <li>› Access Management System</li> <li>› SuccessFactors</li> <li>› Learning Management System</li> </ul>	<ul style="list-style-type: none"> <li>› ISNetworld will be used as a portal for Contractors to submit and access all required information (replaces email/manual communication)</li> <li>› Contractor data will flow to FCX systems automatically via API</li> <li>› Ariba &amp; CAS will still be used for Contractor Registration and Contract Execution</li> </ul>	<ul style="list-style-type: none"> <li>› Contractor self-service removes burden from FCX resources</li> <li>› Real-time compliance status monitoring</li> <li>› Standardization of best practices &amp; requirements across FCX sites</li> <li>› Streamlined data flow and records retention</li> </ul>
 <b>Processes</b>	<ul style="list-style-type: none"> <li>› Onboarding</li> <li>› HSE Policy &amp; Risk Management</li> <li>› ESG Policy &amp; Risk Management</li> <li>› Contractor Performance</li> <li>› Offboarding</li> </ul>	<ul style="list-style-type: none"> <li>› Contractors need to register with ISN when onboarding with FCX</li> <li>› FCX end users can view contractor's HSE &amp; ESG policy &amp; performance information easily on ISN</li> <li>› Active contractor roster management allows FCX to see what contractors are on site and where</li> </ul>	<ul style="list-style-type: none"> <li>› ISN bring industry leading experience and expertise to support FCX's contractors</li> <li>› Streamlines enforcement of contractors to FCX's policies</li> <li>› Data reporting provides visibility to FCX end users for more effective contractor performance management</li> </ul>
 <b>People</b>	<ul style="list-style-type: none"> <li>› FCX Contractor Governance Team</li> <li>› Project Managers / Operations</li> <li>› HSE</li> <li>› GSC</li> <li>› MIS</li> </ul>	<ul style="list-style-type: none"> <li>› Establishing FCX Governance team to facilitate FCX's contractor management program</li> <li>› Providing Project Managers with tools to execute CM best practices</li> </ul>	<ul style="list-style-type: none"> <li>› Improved contractor safety performance</li> <li>› Improved contractor compliance to FCX's best practice standards &amp; policies</li> </ul>

# ISN Implementation Strategy – 1Q/2Q 2024

## Phase 1 – Contractor Registration & HSE Compliance

### Dec 2023 – Mar 2024

- Register FCX Contractors on ISN
  - On-Site/High Risk Contractors
- Establish Health Safety & Environmental policy requirements and controls on ISN
- Change Management Communication
  - Internal – sessions with all sites
  - External – letters and expectations to contractors
  - Awareness Sessions (training)
- Establish FCX Governance Team
- Technical Setup
  - Single Sign-On
  - User Roles (Admin vs user)

## Phase 2 – E-Learning & Worker Profile

### Apr – May 2024

- Establish E-Learning Content & Modules
  - Link to LMS records retention
- Establish Contractor Worker Profile data intake process
  - Experience Level in Mining
  - Headcounts by Mine Area
  - Primary & Secondary Trades/Skills
- Clean existing SAP contractor records

## Phase 3 - API

### 2Q/3Q 2024

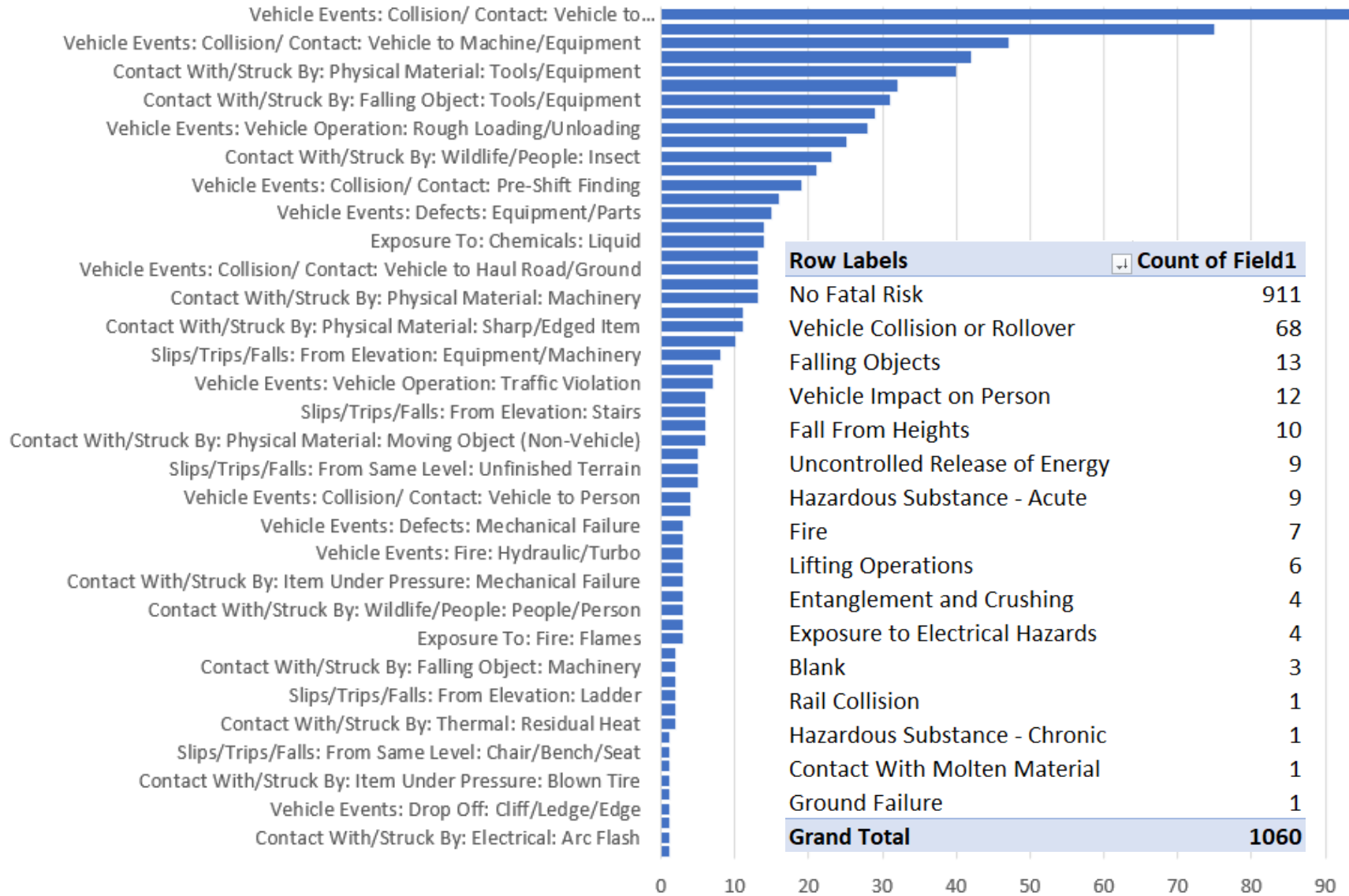
- Application Programming Interface (API)
- Automated data flow from ISN to FCX Systems
  - SuccessFactors, AMS, Snowflake, LMS
- Develop PowerBI Reporting Dashboards
  - Contractor Compliance Status
  - Contractor Headcounts



# 2023 TRIR & HRIR



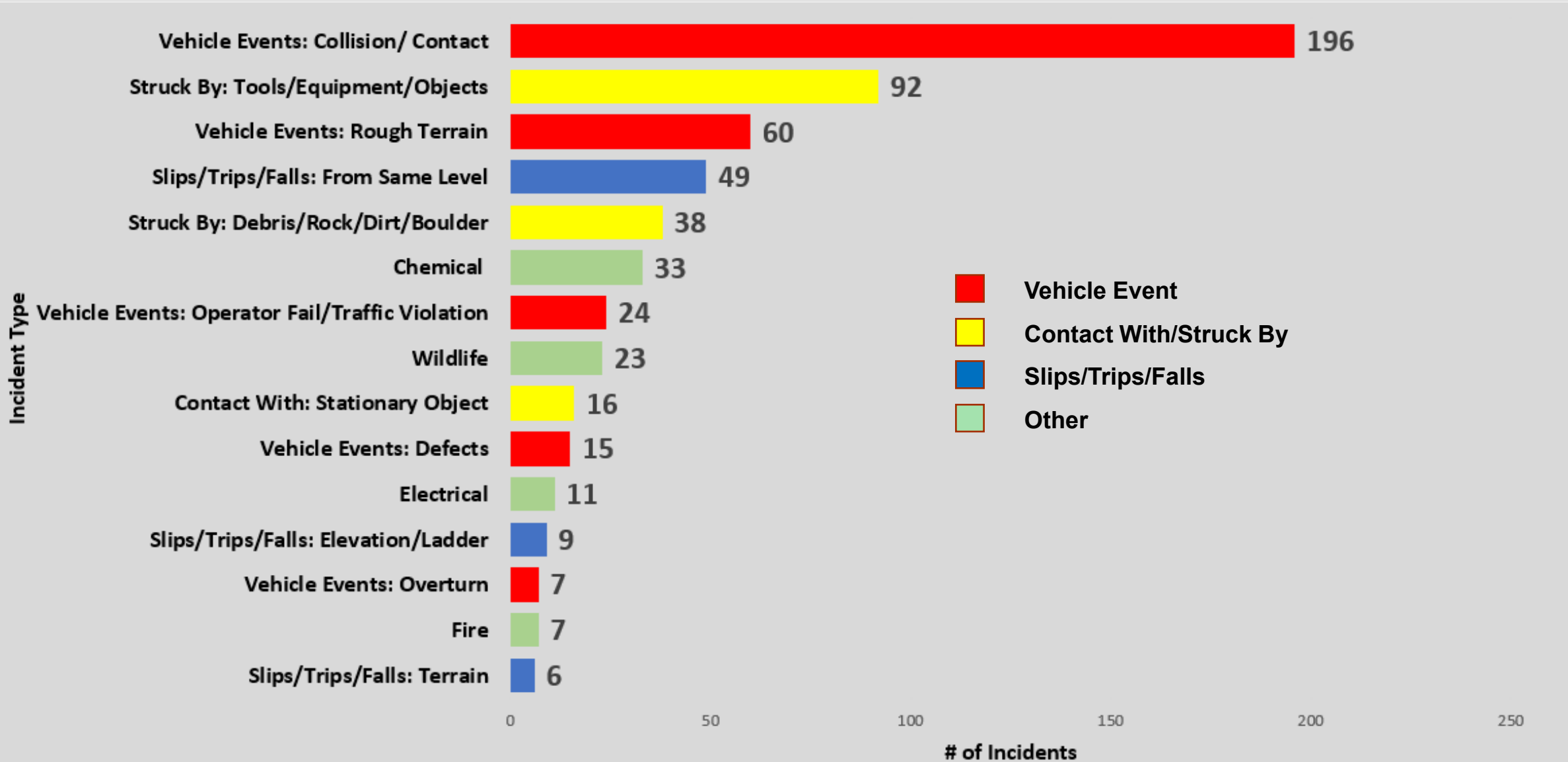
# 2023 Morenci Events



**1060 Total Events**

**100**

# 2023 Events by Type



# THE POWER OF COPPER

## Significant Safety Events

FCX  
LISTED  
NYSE



ICMM  
Member



*Morenci Mine*

**FREEMPORT**  
*FOREMOST IN COPPER*

fcx.com

# Safety Share Reasons behind

*"Thats the way we've always done it"*



“If you always do what you’ve always done, you’ll always get what you’ve always got.”

– Henry Ford

- Work habits are hard to change
  - Change is hard after people get comfortable doing things.
  - Change requires planning
  - Implied or self imposed or real production pressure.
  - Disengagement
- 
- Coach your team to avoid using phrases such as “This is what we've always done” or “That will never work.”
  - Help them understand why such that can be detrimental to adopting and accelerating the change that's essential for safe production

# SWAPP – Lowboy Trackhoe Event



- Right front track fell off Lowboy
- Binder / tie down stripped

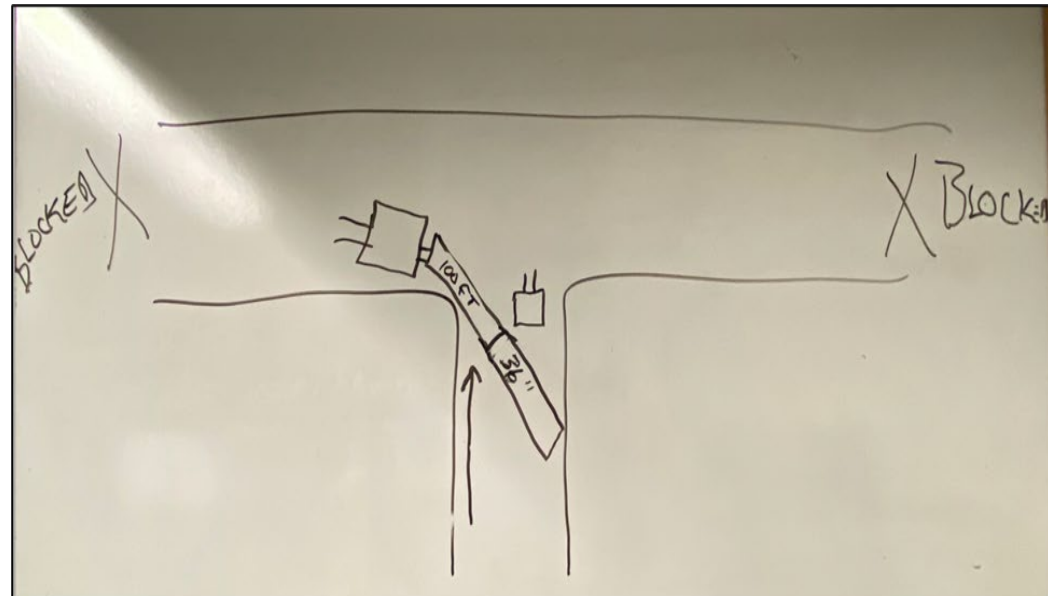
## Initial Learnings

- Storage and Maintenance of Binders
- Pre-use inspection
- Communication on Haul roads to secure scene

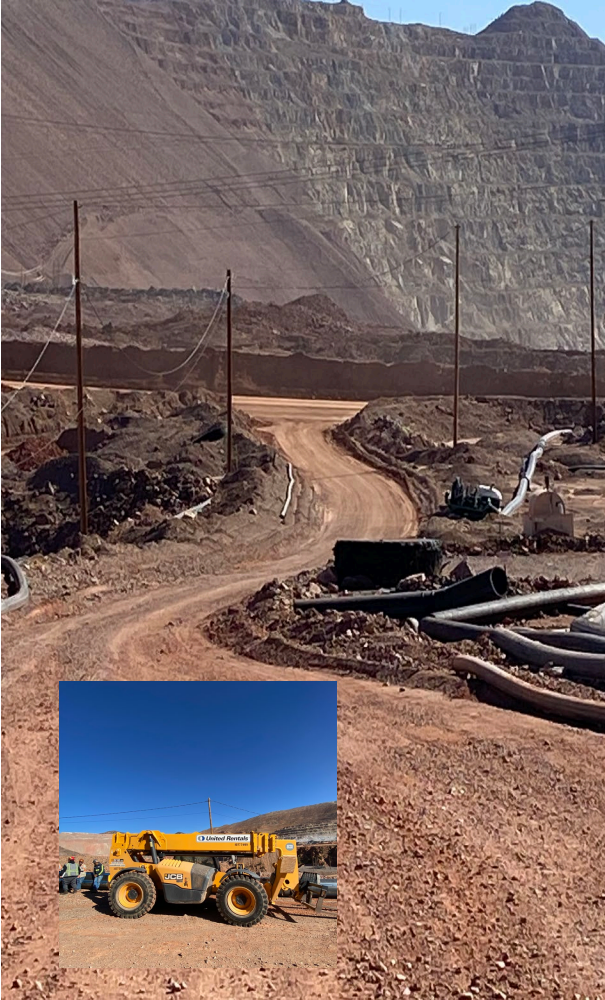
# HDPE Pipe Pulling Incident

- A Pipe crew was pulling two sections (300' and 100') of 30" HDPE SDR 17 pipe down an access road to the intersection of a haul road. The haul road was blocked off on both sides with blockers and the rear of the pull had a blocker. A 966 loader was used to pull the pipe and a forklift with an extend boom was used to guide the pipe against the berm. They were pulling the pipe across the haul road to an area where it was to be placed for fusing.
- The loader entered the haul road with the 100' piece as he was making a left turn, the forklift operator parked at the intersection so that he could guide the pipe next to the berm. The pipe was on his left side between the forklift and the berm.

The end of the pipe came up to the place where it climbed the berm, causing pipe to go higher than the wheels. As pipe straightened out it contacted cab door that was open. The window was shatter door basically destroyed.



# Pictures of Area



Intersection



- Damage to forklift
- Tire/Pipe comparison



Truck for placement of forklift



# HDPE Pipe Handling Policy

Health and Safety FCX-HS12 | Release Date 1/18/2019

- All personnel must remain 50ft. (15.24m) or more away from pipe being moved or handled, or **utilize substantial barriers.**
- Personnel directly involved with handling activities and within 50ft. (15.24m) of HDPE must **ensure pipe is controlled and blocked** as necessary.
- Eliminate interaction with traffic or utilize appropriate blocking during pulls. **Consider increased stored energy when bending pipe and install barriers as needed.**

# HDPE Pipe Handling Permit and Pre Job Hazard Analysis Approved 1/18/2019

Pre Job Hazard Analysis											
Section 1: General Hazard Analysis			YES	NO	NA	Section 2: Pipe Pulling Analysis			YES	NO	NA
Are all personnel working on this task properly trained to perform the work?						Has appropriate rigging been identified?					
Have all affected departments/areas been notified? <i>List:</i>						Does travel path create any bends in pipe? <i>Controls:</i>					
Is the pipeline buried, or is earth work required?						Has travel path been identified and communicated?					
Is a Utility Location Permit required and completed?						Does the length or path require spotters or blockers?					
Is a Hot Work Permit required and completed?						Section 3: Fusing/Installation/Repair Analysis			YES	NO	NA
Are substantial barrier required to protect personnel and are they adequate for this task?						For multiple crews on the pipeline, is energy controlled between crews?					
Are all energized/ pressurized lines near the work area or travel path identified and controlled? <i>List pressurized lines and controls:</i>  <i>List energized lines and controls:</i>						Will loading or unloading pipe into the fusing machine release stored energy? <i>Controls:</i>					
						Has safe access been established to the work area?					
						Has appropriate rigging been identified?					
						Is Datalogger connected and working properly?					
						Section 4: Energy Source Review					
Have pipe contents been identified and appropriate Safety and Environmental controls in place?						YES	NO	HAZARD	CONTROLS:		
								High wall/material angle of repose			
Has the pipeline been isolated? <i>LOTOTO points:</i>								Line of fire			
								Weather			
Have all cut points been clearly identified by a qualified individual?								Uncontrolled release of energy			
Will cutting release any stored energy? <i>Controls:</i>								Falls/falling objects			
Is a Safety Watch required for this task?								Others:			
Is lighting sufficient for the task?											



Preliminary Incident Details	
<b>Operation</b>	Miami Smelter
<b>Date / Time</b>	December 27, 2023 / 5:57 a.m.
<b>Type</b>	Injury
<b>Summary</b>	An employee was walking through a parking lot to join a lineout meeting when a pickup truck made a wide turn into a parking spot and struck the employee, who was knocked to the ground.
<b>Fatal Risk</b>	Vehicle Impact on Person
<b>Risk Category</b>	Monitor
<b>Pre / Post Rating</b>	Significant (3) Possible (2)
<b>Findings / Missing Controls</b>	<ul style="list-style-type: none"> <li>No documented vehicle inspection performed</li> <li>Employee was crossing parking lot outside of designated walkway</li> <li>Light vehicle windows were not fully defrosted, reducing visibility</li> <li>Speed</li> </ul>
<b>Applicable Policies / Procedures</b>	<ul style="list-style-type: none"> <li>Interaction with Heavy Mobile Equipment – Surface</li> </ul>
<b>Employee Condition</b>	The employee was taken to the regional medical center with a scraped knee and abdominal pain and was released with no restrictions.
<b>Contact</b>	Louie Barreras, Senior Supervisor Health and Safety

Photos / Links



The light vehicle (left) that struck the employee and the parking spot.

Preliminary Incident Details	
Operation	PT Freeport Indonesia
Date / Time	December 4, 2023 / 11:30 a.m.
Type	Injury
Summary	An Isuzu passenger transport truck was heading to Kasuang when the driver lost control along a steep downhill road segment. The vehicle hit a trash bin, causing it to spin, before striking a crane and coming to a stop. The trash bin struck a rigger who was standing nearby, resulting in injury. The truck operator's foot was pinched inside the cabin, requiring extraction to be released from the vehicle. Discovered truck was not in proper gear for grade.
Fatal Risk	Vehicle Collision or Rollover
Risk Category	Actionable
Pre / Post Rating	Significant (3) Likely (3)
Findings / Missing Controls	<ul style="list-style-type: none"> <li>• Incorrect or unsuccessful use of proper gear selection</li> <li>• Failure to operate vehicle according to road conditions</li> <li>• Failure to secure control of the vehicle</li> <li>• Operator competency</li> </ul>
Applicable Policies / Procedures	<a href="#">SOP-6.01-UGMO03</a> Operating Procedure Truck Isuzu NPS-75 Type Manhaul, Boom Crane and Rescue Truck in the Underground Mine and Surface Area
Employee Condition	Truck operator received first aid. Rigger sustained chest and hand injuries and is under observation.
Contact	Matthew Sullivan, Sr. Vice President-Underground Mine Division

PFE # 2023-38  
Version 1.0 847

### Photos / Links






Draft



# Preliminary Findings

## Morenci Railroad Near Miss

Incident Details	
<b>Operation</b>	FM Americas: Morenci
<b>Date / Time</b>	December 28, 2023 / 9:00 am
<b>Type</b>	Near Miss
<b>Summary</b>	A Railroad employee was using a rail mounted piece of equipment (Petty Bone) to trim vegetation along the Railroad when he stopped at the Columbine Gate crossing to dismount the rail. He stopped and was getting ready to disengage the wheels when he felt the Petty Bone rolling away. He couldn't stop it with the brake system, so he dismounted the equipment and the equipment continued down the track approximately 1.76 miles coming to a stop at the derailer. Discovered improper placement of the equipment onto tracks.
<b>Fatal Risk</b>	Railroad Collision
<b>Risk Category</b>	Actionable
<b>Pre / Post Rating</b>	Significant (3), Likely (3)
<b>Absent / Insufficient Controls</b>	Proper securement / Proper Equipment operation
<b>Applicable Policies / Procedures</b>	Equipment Operation, Operatorr Competency verification
<b>Employee Condition</b>	N/A
<b>Contact</b>	Rassie Ras, Health & Safety Manager

### Photos / Links

Event ID # 20042432



**Savage – Safford, AZ Operation**  
January Contractor Meeting Presentation

### Lost Time Event



## Lost Time Event

1/1/2024

On 1/1/2024 at 02:00 PM TM was attempting to remove a 4-inch hose at the Transload Facility- Rail Car Station #18. The TM was unsuccessful at removing the hose therefore, removed their Full-Face Respirator and gear to remove the stuck hose. The TM then was able to loosen the hose. At this time the hose struck TMs eye/nose. The TM was immediately escorted by her co-worker to Gila Health Resources. The Supervisor informed health and safety personnel. A thorough scene investigation was conducted to determine cause of incident. The employee was evacuated to UMC by the emergency helicopter for injuries.





**SAVAGE**

## Investigation is still underway

- Investigation will wrap up close of business Friday
- Lost Time event
- TM is steadily improving

# THE POWER OF COPPER

## MSHA Inspection

**FREEMPORT**  
*FOREMOST IN COPPER*

Housekeeping – Berm  
blocking entrance to P-11  
tunnel Footprints on berm



Gas cylinders stored at crusher 3 without no smoking/flames warning sign.	56.7805	Fire
--	---------	------

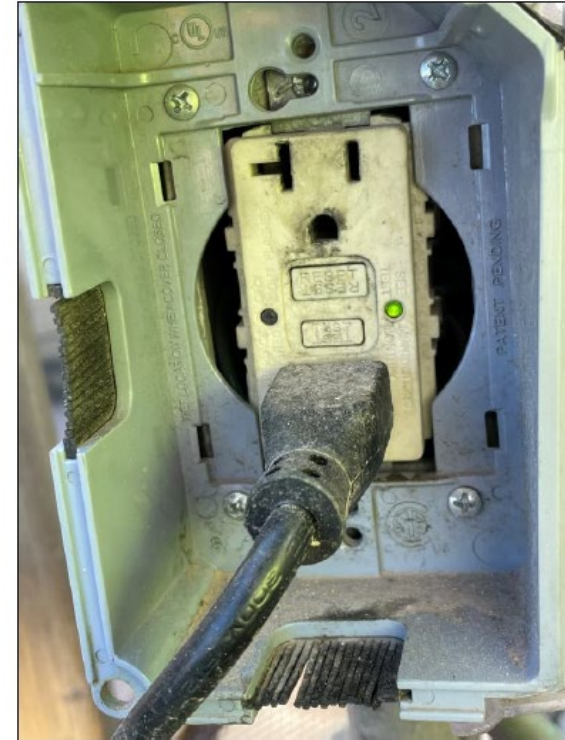
# Cited.....

Emergency Hyd Safety  
Release not functioning  
on skid steer  
56.14100b



Defects shall be corrected in a  
timely manner

Exposed Wires  
56.12004 Electrical



Cited – Wrong face plate  
installed, wiring accessible  
Non S/S- 56.12032  
Electricians repaired.

# Substandard conditions



Full trash can /hand wash station tipped over/ Not cited



Tote- was empty- had rotated in frame in had been set on. Would not be stable in high wind determined by ease of shaking it. Need more diligence when set in holders or additional securement. D Bonilla arranged to stable-ize

What questions do these trigger?

Competent WORK PLACE EXAMS?

Perfunctory?

Monitoring Processes?

# What is learnings?



Walkway in past inspections was determined to be high spillage that could not be adequately maintained for housekeeping. Access was blocked off with barricaded on both sides.

Discovered barricades have been removed. Has been used as a travel path.

Non S/S 56.20003 b  
Housekeeping

Barricaded

# What is the learning from this picture?



Bedding plant



No.2 belt at bedding plant. Unfinished maintenance left exposure to hazards.  
Crossover – no handrails – general clean up poor. Not cited-  
Erected warning tape

# What are learnings from this picture?



Sheer Feed containment area – one side yellow flagging/ bottom of stairs still accessible



Sheer Feed containment area – one side yellow flagging/ open to all other sides

Sheer Feed containment area – one side yellow flagging/ open to all other sides. This condition can occur when drains plug or defects in valves. Recommend: Install handrails around containment with signage indicated restricted access when spills create hazards

Non S/S Citation  
56.20011  
Barricading and signage

Erected yellow flagging



# What are learnings from this picture?



Food consumption area next to chemicals.  
Not cited, but could have been. 56.200014



Expired fire extinguisher Caustic unloading area.  
Non S/S Citation 42.01b  
Terminated

# What are learnings from this picture?



Not cited – berm insufficient alley behind bedding plant. Had tire tracks on edges of berm . Contacted Surface dept via Will Wearne to address. Not cited but could have been. Discovered other equipment besides LVs use this thoroughfare.



2 Spare breakers behind this panel were not labeled but in “ON” position. Discovered they were landed. Non S/S Citation 56.12004  
 Were turned off – need a down day to identify what they supply and if circuits are still in use – to determine if they need to be de-termed or breakers locked out.

## Moly MCC Room



Label identifying equipment missing

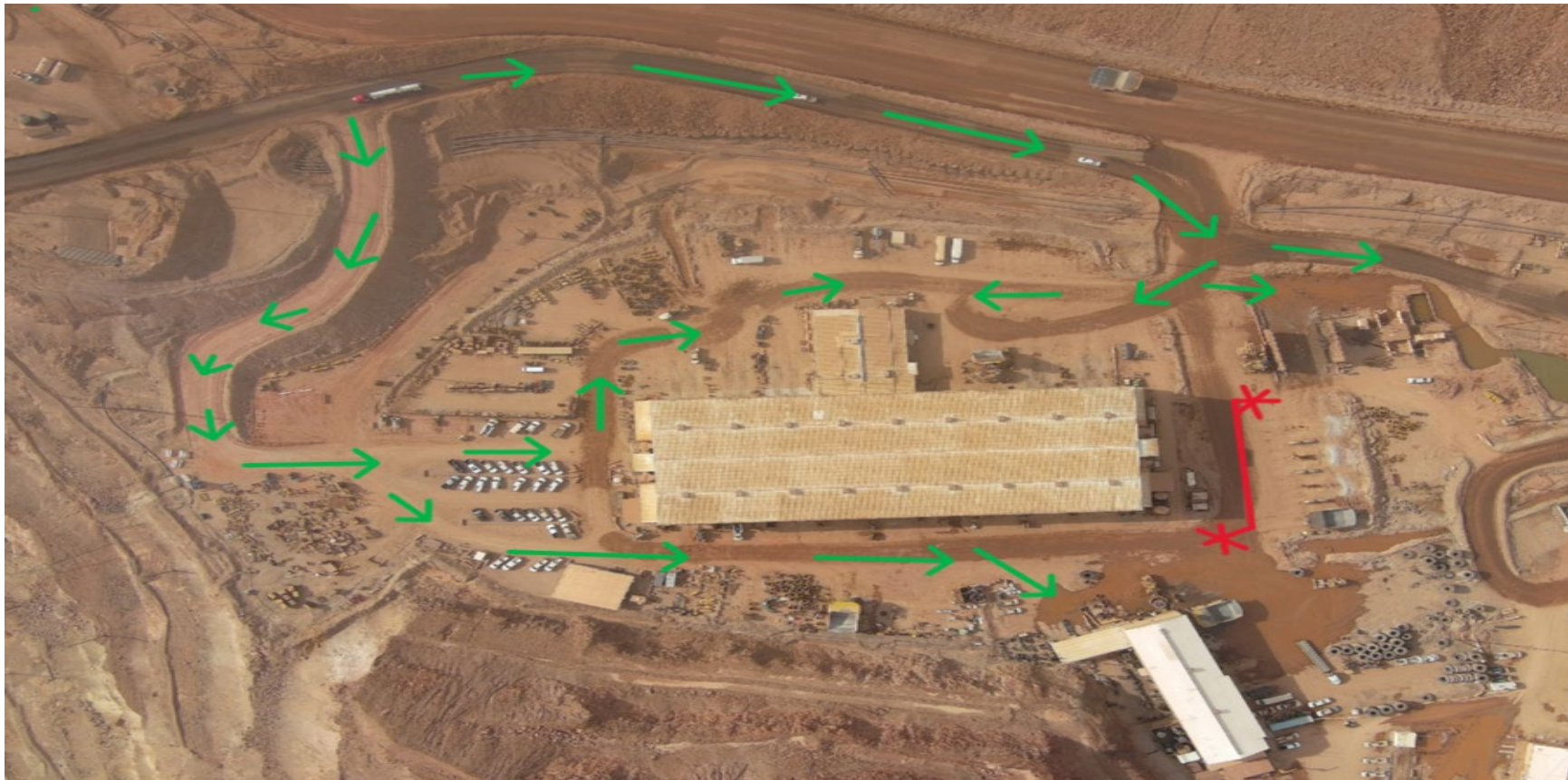
Housekeeping	56.20003	28
Housekeeping	56.4101	17
Unsafe Access	56.11001	6
Elec Cover plates	56.12032	5
Guarding	56.14107a	6
Elec Conductors	56.12004	5
Quarterly reports	56.5040	4
Labeling	47.41A	3
Safety defects	56.14100	4
Ladders	56.11003	2
Elec Dist Box	56.12006	2
Elec Insulation	56.12008	2
Elec Labeling	56.12018	2
Vegetation -Transf	41.30B	1
Elec labels	56. 12006	1
Elec-Ground tests	56.12028	1
lockTransformer	56. 12068	1
Back Up Alarm	56.14132	1

S/S	18
Non S/S	75

Sample of Citations
2 diesel fuel cans not labeled
unlabeled bottles
Distribution Box Torn Labeling
Unsafe access due to parts, trash, etc. blocking access to circuit breaker box
Entry to stairway
BO ladder
Distributor box Exposing wires
Sx tankfarm organic Slippery Surface
Unlabeled Breakers
Breakers labeled spare were live and in on position
Exposed wires on R8 weight cart control pendant
Power cord for small sump pump fed through building metal
Unlabeled circuit breaker box without legend.
Missing ground prong on extension cord
Cooling fan motor missing cap
Open electrical cabinet
Exposed Wires (Cover plates and Receptacles)
Missing Gaurding
Missing Guard on tail pulley
Motorspace Heater guard not sealed
Pedestal grinder tool rest 1" away from grinding wheel.
Skid steer at P5/6 tower horn not functioning properly
Belt alarm did not go off before p9 started
Materials stacked up, restricting access to fire extinguisher on R9/R10 transfer.
Housekeeping. Footprints in material buildup at P5
Flammable gas cylinders without no smoking sign left side of 801 feeder
Oxygen and acetylene tanks at R8 lay down area missing no smoking/open flame signs
Quartly reports not on time
Unsecured gas cylinder

To improve Traffic Safety conditions at the Heavy-Duty Truck Shop, Light Vehicles heading to the tire shop should avoid the area marked in RED

***Begin using the green arrow route***



# THE POWER OF COPPER

**FREEMPORT**  
*FOREMOST IN COPPER*