

THE VALUE OF
COPPER

**Morenci Townsite Contractor
Safety Meeting**

July 24, 2024



**Please Silence Your Cell Phones
Mute Your Microphone on Teams**

Scan to Sign In



**FCX
LISTED
NYSE**



**ICMM
Member**



All Operating Sites

**SAFE
PRODUCTION
MATTERS**

fcx.com

FREEPORT
FOREMOST IN COPPER

SAFE
PRODUCTION
MATTERS **Agenda**

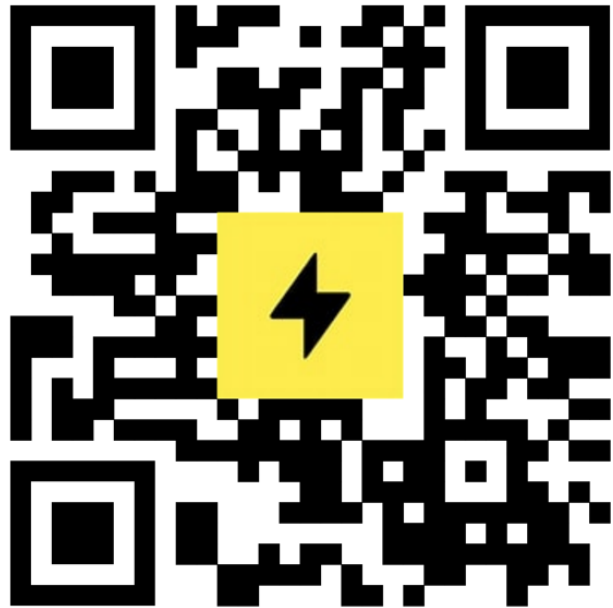
- Safety share
 - Lightning
 - Brown Recluse
- Environmental Share
 - Emergency Generators
- Safety Stats
- Safety Events and Alerts
- ISN Update
- Communications

Lightning Notifications

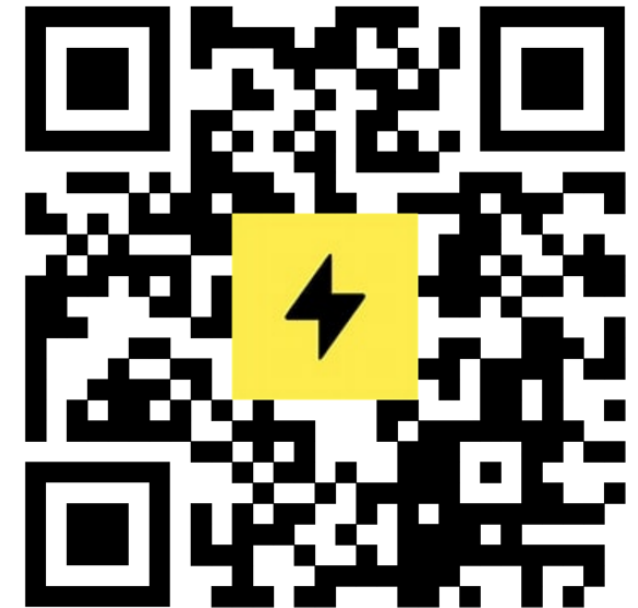
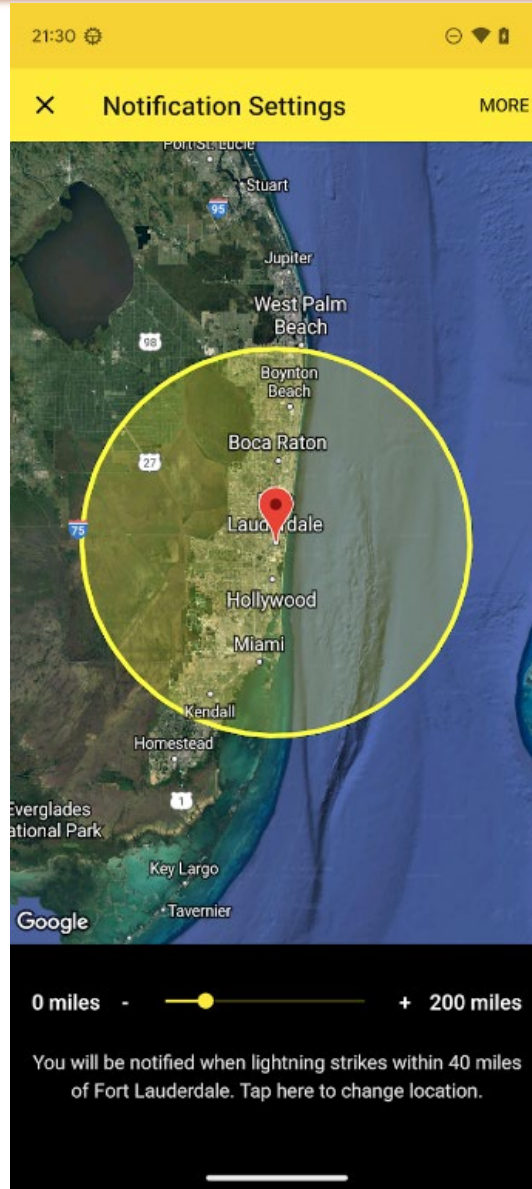


- **Red Alert** for lightning within 6 Miles
- **Yellow Alert** for lightning within 15 Miles
- **Mine Alert:** Centered on Heavy Duty Truck Shop
- **Processing Alert:** Centered on Southside Tank House
- Clears after 10 minutes with no strikes.
- Radio announcement, visual, and audible alarms for **Red Alerts**.
- Alerts accessible by e-mail and/or text

My Lightning Tracker



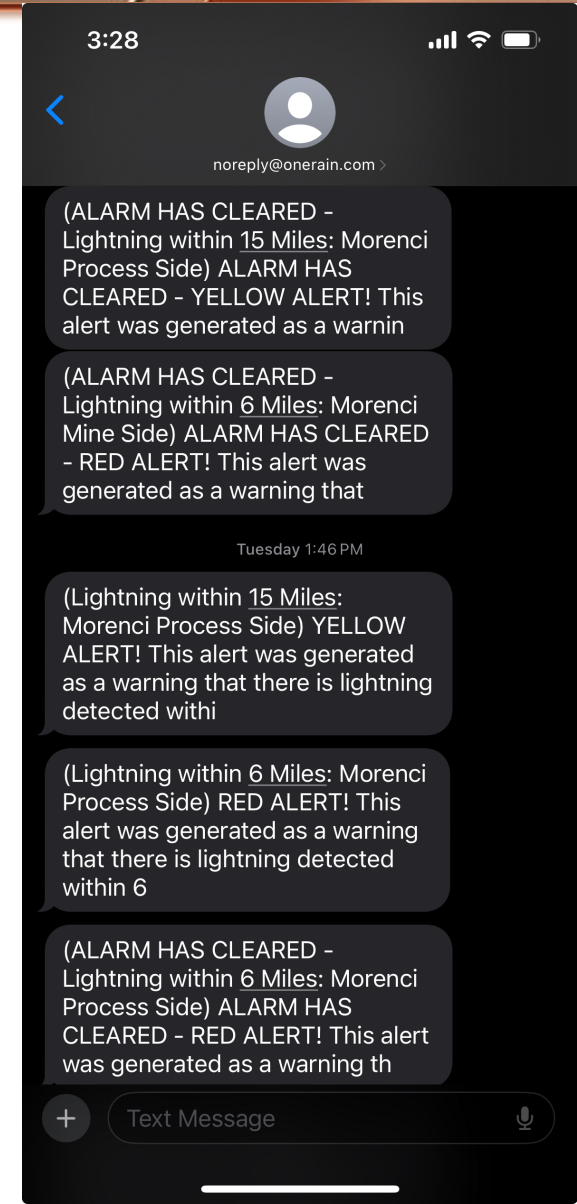
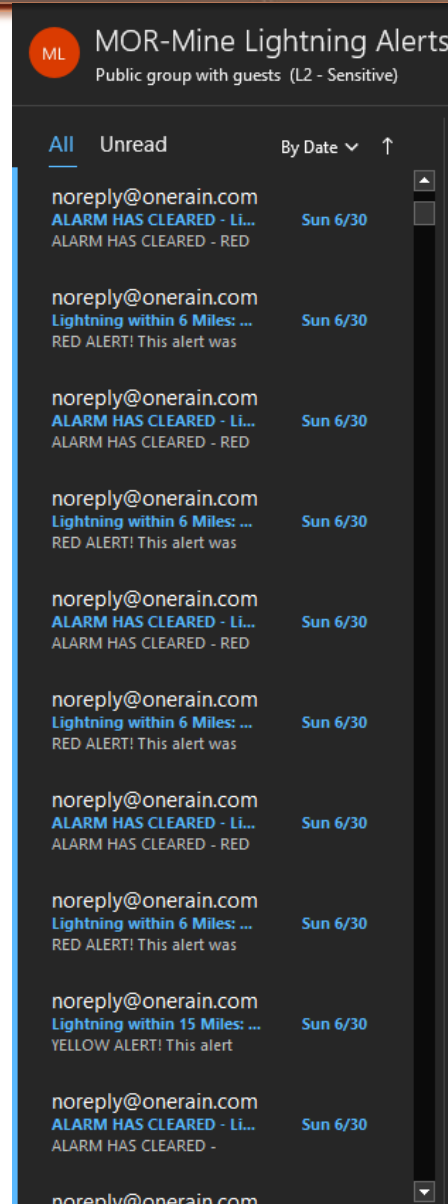
Google (Samsung)



Apple (iPhone)

Lightning Notifications

FMI - Morenci Lightning Alert Notifications

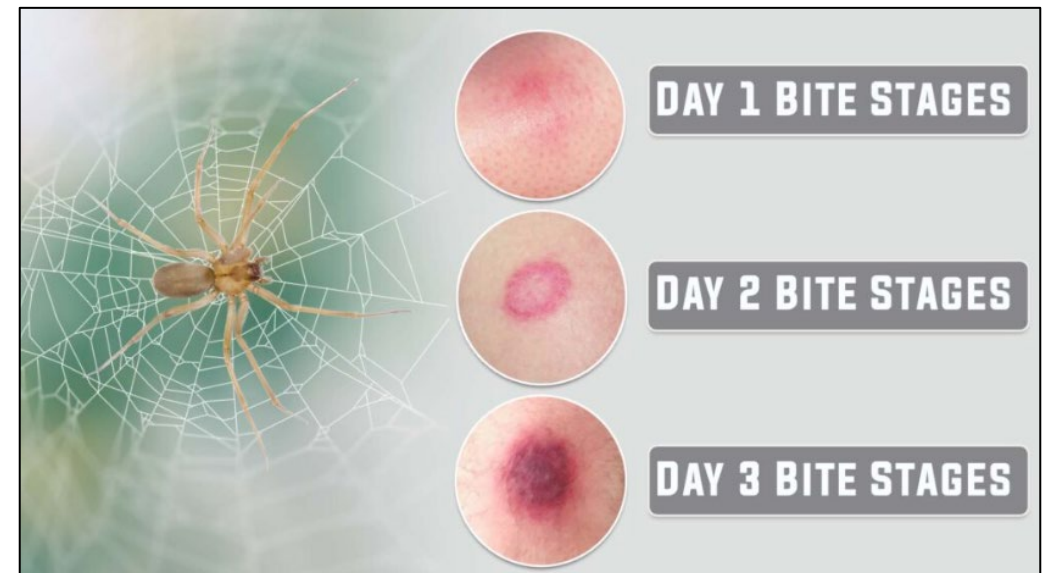


Safety Share -




- Native to the South and Central U.S. states
- Two distinctive features- violin-shaped marking and six paired eyes.
- In the wild- they hide in tree cavities, and under rocks, hunt their insect prey at night. In home- behind clothes dryer, in basement stored winter coats, shoes, and woolly hats
- Webs with egg sacks in hidden-away spots can be a sign of brown recluse habitation.
- An insect-infested house can also attract them — it's a ready food supply.
- Most active between March and October

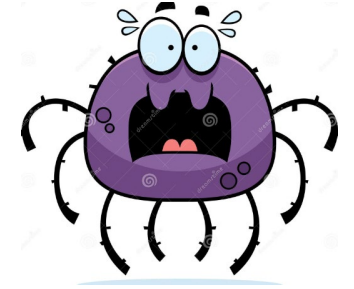
- Most of the time the bites are minor and the small marks they make will fade over time
- There is a chance to experience skin damage. Although these bites are extreme, they can cause necrosis of the skin, killing tissue in area of the bite that can lead to infection.
- These spiders are especially dangerous to children, anyone with medical conditions, the immunocompromised, and the elderly
- Serious complications from brown recluse bites happen only about 10% of the time and are rarely fatal.



Safety Share


QUICK TIP

If you know you've been bitten by a brown recluse, apply ice, elevate the bite, and seek medical attention immediately. If it's possible to do so without endangering yourself, try to bring the spider with you for identification, even if it's crushed or dead.



Symptoms

- Ache/Pain - Blisters- Swelling –bruising surrounding muscles near the bite.
- Pain in your abdomen, back, chest and legs.

Severe Symptoms

- Rash – Fever – Dizziness – Vomiting - Chills.
- Restlessness or difficulty sleeping.
- If you experience any severe symptoms, seek medical attention immediately

Preventing Infestation

- Dust and vacuum your home thoroughly - lay down sticky traps in areas where brown recluses generally hide
- Caulk cracks and crevices where brown recluses can enter.
- Pay attention to areas around windows, doors, vents, utility pipes.
- Solutions of apple cider vinegar, water and essential oils have limited effectiveness.
- Insecticides are most reliable way to kill brown recluse spiders.
- For your safety and that of your family, the benefits of using synthetic pesticides outweighs the risk as long as they are used as directed.

THE VALUE OF COPPER

Environmental Share

FCX
LISTED
NYSE



ICMM
Member



**SAFE
PRODUCTION
MATTERS**

fcx.com

All Operating Sites

FREEPORT
FOREMOST IN COPPER

Environmental Share

Emergency Generators

July 2024



Limitations on Emergency Generators and Emergency Pumps

- Non-emergency run time should not exceed **50 hours** per calendar year
 - Any planned operation (i.e. maintenance or testing) counts towards this limit
- True emergency usage does not count against the 50-hour limit
 - Examples of emergencies include the loss of power from **unplanned** events such as: weather, downed power line, fire at a transformer, etc.
- Use during a **planned power outage** may not exceed the 50 hour limit

THE VALUE OF COPPER

Safety Stats

FCX
LISTED
NYSE



ICMM
Member



**SAFE
PRODUCTION
MATTERS**

fcx.com

All Operating Sites

FREEPORT
FOREMOST IN COPPER

Morenci Contractor All Stats

FREEPORT-McMORAN

Morenci Contractor TRIR

Last Refresh:

7/23/2024 11:23:52 AM

1

Near Miss

57

Property Damage

56

First Aid

4

Lost Time

7

Medical Treatme...

12

Restricted Duty

0

Fatality

Date

7/1/2023

7/24/2024

2.09

TRIR

Total Recordable Incident Rate

● TRIR ● 12 Month Running Total

Month	TRIR	12 Month Running Total
July 2023	1	2.4
August 2023	3	2.6
September 2023	4	2.7
October 2023	2	2.6
November 2023	0	2.4
December 2023	4	2.6
January 2024	1	2.4
February 2024	3	2.6
March 2024	4	2.7
April 2024	1	2.6
May 2024	1	2.4
June 2024	2	2.4
July 2024	3	2.6

23

Total Recordables

Actionable Incident Rate

● Actionable ● Monitor ● 12 Month Running Total

→ Click to Add Monitor 🔴 Reset

Month	Actionable	Monitor	12 Month Running Total
July 2023	0	0	0.00
August 2023	0	3	0.00
September 2023	0	0	0.00
October 2023	0	0	0.00
November 2023	0	4	0.00
December 2023	0	0	0.00
January 2024	0	0	0.00
February 2024	1	2	0.01
March 2024	3	0	0.01
April 2024	0	3	0.02
May 2024	0	2	0.03
June 2024	0	3	0.04
July 2024	0	3	0.04

0.12

High Risk Incident Rate

12

Total High Risk

Contractor Name

- Select all
- Ace Industries Inc
- Advanced Lining Solutions ...
- AECOM
- American Power LLC
- AMES CONSTRUCTIONS
- Arizona Electrical Apparatus
- B.J. Cecil Trucking Inc.
- Barney Trucking
- Bison Engineering
- Boart Longyear
- Bowman Consulting
- Brahma Group
- Brightview Landscaping
- Burks Valley Sanitation LLC
- Call & Nicholas Inc
- Caltrol
- Canary Systems
- Carrier
- CKC Construction & Materials

Townsite Maint. Safety Stats - 2024

SAFE
PRODUCTION
MATTERS

**Townsite – 4 Incidents
– All low risk**



MWE Safety Stats - 2024

MWE - 1 PD – April 30

FREEMPORT-McMORAN

Total Recordable Incident Rate

Last Refresh:
7/24/2024 7:31 AM

0

Near Miss

1

Property Damage

0

First Aid

0

Lost Time

0

Medical Treatment

0

Restricted Duty

0

Fatality

Date

7/25/2023

7/24/2024

Organization

Select all

- Administration
 - Accounting
 - Administration
 - Coffee Shop
 - Community Center
 - Environmental
 - Global Supply
 - Health & Safety
 - Human Resources
 - Library
 - Mercantile Conoco
 - Mercantile Lanes
 - Mercantile Motel
 - MIS
 - Morenci Water & Electric
 - Plant Engineering
 - Security
 - Townsite
 - Training Department
- Mine
 - Fragmentation - Loading/ ...
 - Haulage
 - Mine Maintenance

0.00

Total Recordable Incident Rate

Total Recordable Incident Rate

TRIR Goal 2024 - 2.65 June/July Estimated

● MTD TRIR ● 12 Month Rolling Total

0

Total Recordables

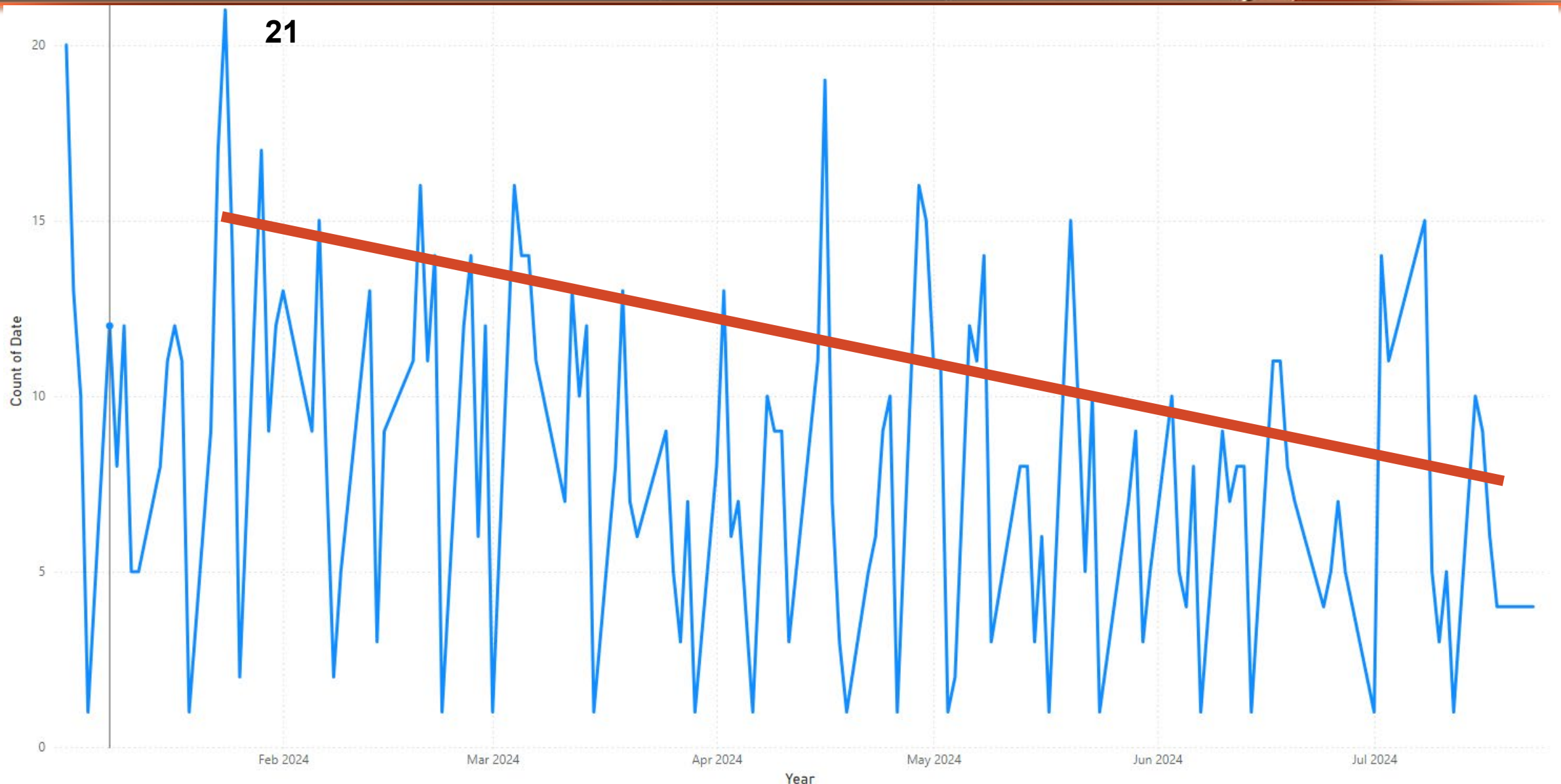
High Risk Incident Rate

→ Click to Add Monitor → Reset

0

Total High Risk

Townsite Maint. Audits



THE VALUE OF COPPER

Safety Events

FCX
LISTED
NYSE



ICMM
Member



**SAFE
PRODUCTION
MATTERS**

fcx.com

All Operating Sites

FREEPORT
FOREMOST IN COPPER

Fly Metal Event

Diesel Mechanic in the Heavy-Duty Truck Shop was **installing a bearing on a steer cylinder**. The employee was **hammering it in with a ball peen hammer** with assistance from another employee. Employees were **not wearing any special PPE** for the job. While hammering the employee felt warm tingling on right arm and noticed it was blood. Pressure was applied and EMTs contacted.



Past Fly Metal Events

- HDTS pulling tracks In bay 3 -let zipper fall - hit floor rail and piece of fly metal projected from grouser into employee's cheek 2 bays away
- Removing bolt of a heat exchanger at Hydromet using impact wrench – end of bolt projected into triceps of mechanic, had to be surgically removed
- While commissioning portable stacker, pressures on tracks pivoting on hard ground gouged sprockets, and eventually created a projectile, striking a person in the face above his lip. Injury required orthodontal surgery.
- While installing a pin on a shovel track using a double jack, a projectile off the pin embedded into the thigh of an employee in vicinity performing the work.

Fly Metal Event

Standard Safety Requirements Policy

Health and Safety FCX-HS29 | Release Date 1/18/2019 | Rev 3/11/24

Lifting Operations *Flagging* *Flagging*

Hierarchy of Control		Controls Stop work if controls are insufficient or missing	
Elimination	<input checked="" type="checkbox"/> LOTOTO	<input checked="" type="checkbox"/> Vehicle Safety Devices	<input type="checkbox"/> Rest / Breaks
Substitution	<input type="checkbox"/> Access Control / Barriers	<input checked="" type="checkbox"/> Process / SOP	<input type="checkbox"/> Spotter / Signal Person
Engineering	<input checked="" type="checkbox"/> Flagging / Signage	<input type="checkbox"/> Blocking / Isolation	<input type="checkbox"/> Fire Watch / Attendant
Administrative	<input checked="" type="checkbox"/> Equipment / Tooling	<input type="checkbox"/> Fire Suppression System	<input type="checkbox"/> Lights / Signals
Behavior	Other:		

If a control causes more of a hazard, apply for a variance

Permits / Forms Proper execution of a permit is the control, not the paper

Hot Work Critical Lifting High Wall Blasting

Blue Stake Confined Space Dump HDPE

Other:

Behavior Individual willingness & focus on safety

Inspect Equipment / Tools Consequence Thinking Pre/Post Job Housekeeping Fit for Duty

Work Place Examination Hand / Body Placement 3 Points of Contact Communication

Other:

PPE Beyond minimum required

Fall Protection Skin Protection: Bugs, Sun Rubber Suits: Acid, Rain, Boots, etc.

Arc Flash Clothing Face Shields / Goggles Monitor: Gas, Chemical, Radiation, etc.

Welding Gear Respirator / Supplied Air Hearing Protection: Plugs, Double

Flotation Device Clothing for Weather Gloves Suitable for Job: Leather, Rubber, Kevlar etc.

Other:

Fatal Risk Hazards List the main fatal risks / hazards

Explosion of crushing
falling objects
vehicle component failure
fire
uncontrolled slip or twist
fall from heights

Critical Controls List the main control for the hazard

hand and tool placement
hand holding
proper communication
fire watch and housekeeping Hotwork permit
barrels
proper use

Main Lockout/Tagout Station Box

1. Main Power in case of Emergency Phone: dial 865-6600

2. Air valves Radio: press the ORANGE button or call out "May Day, May Day, May Day"

3. Gas Evacuation point: *work area*

4. Fire extinguisher inspected & in area

5. Shower / eye wash station in area Spill Hotline: 865-5PIL (7748)

Acknowledgement & Commitment to Safety I am responsible for my safety & my coworkers safety. I am obligated to stop unsafe work & I will stop unsafe work.

Payroll #	(Is Contractor Company)	Initials	Payroll #	(Is Contractor Company)	Initials	Payroll #	(Is Contractor Company)	Initials
6-0618-15	FMC	LD	2655	empire	DL			
60028830	FMC	JT						
3843	empire	SEN						

Job Lead Name: *Luiz Duran* Payroll # *64855* Date: *7/1/24* Time

Supervisor: Contact Info:

• Fly Metal Risks:

- Hammers 4lbs(1.81kg) and larger must be soft blow hammers that have a hardness rating of 30HRC or below. Soft blow hammers are made of materials such as soft steel, brass, bronze, copper, lead, nylon, plastic, rubber or urethane.
- Employees impacting on hardened steels shall wear body protection consisting of leather or kevlar (i.e., Hexarmor) on their legs, arms, neck and if applicable have shields in place for employee passing through the area (removal of employees in the area is suffice).
- Establish Maintenance plan for tracked equipment shoes and other wear components to reduce likelihood of fly metal. Employees should avoid line of fire areas for potential fly metal while working near moving tracked equipment (i.e., shovels, dozers, track-hoes, stackers).

- Fly Metal Identified
- Controls were not identified / required PPE not utilized
- Soft hammer was within reach in tool room



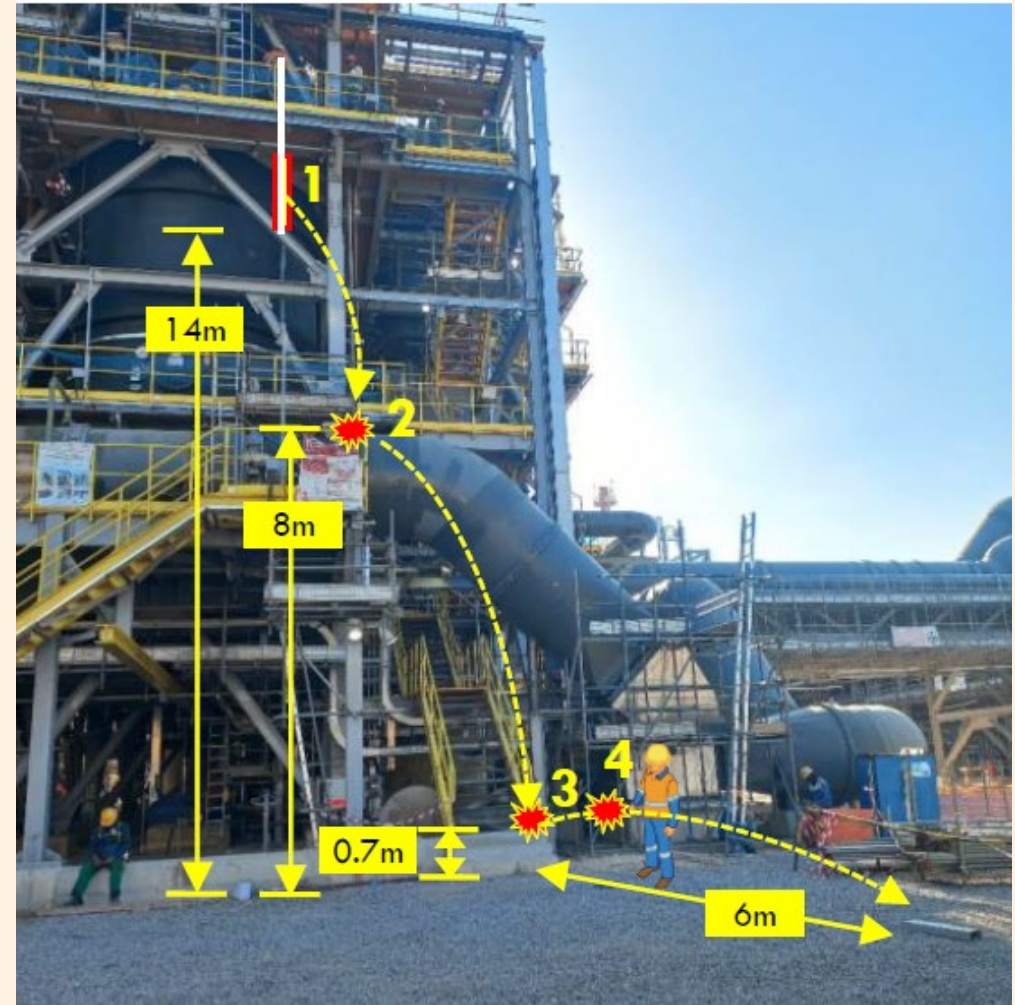
Falling Objects

Potential Fatal Event: Dropped C-channel Strikes Employee

Preliminary Incident Details

Operation	Manyar Smelter Project
Date / Time	June 20, 2024 / 1:30 p.m.
Event Type	Injury - Medical Treatment
Summary	While performing housekeeping activities, a C-channel (approximately 25 lbs) was hoisted with a 12-mm nylon rope from the third to the second level of the structure. While being hoisted, the C-channel beam became untied and fell. It bounced off the structure three times and struck the right hand of an employee who was walking before landing on the ground.
Risk Category	Monitor – Significant (3) Likely (2)
Findings / Missing Controls	<ul style="list-style-type: none"> The area immediately below the structure was barricaded, but the beam bounced outside the exclusion zone.
Applicable Policies / Procedures	<ul style="list-style-type: none"> Site Dropped Object Prevention Plan Site Permit to Work procedures Flagging and Barricading Policy
Employee Condition	<ul style="list-style-type: none"> Employee suffered a contusion on the hand and a fractured finger.
Contact	<ul style="list-style-type: none"> Zachary Scrivner, Manager-Corporate Project Engineering Safety

Photos / Links



• Diagram of the dropped channel path, contact points and elevations.

THE VALUE OF COPPER

ISN Updates

FCX
LISTED
NYSE



ICMM
Member



SAFE
PRODUCTION
MATTERS

fcx.com

All Operating Sites

FREEPORT
FOREMOST IN COPPER

ISN Roll-Out

- Acceptable Scorecard and Worker Profile Submissions – Due by 7/31
- Worker Profile Quick Reference Guide and Video Guides have been loaded to the Public Portal home page: <https://publicportal.fmi.com/>



Will be reviewing ISN scorecards for all townsite companies and reaching out to companies to see where they need help.

Please contact Garrit if you're having problems with safety program document submittals

THE VALUE OF COPPER

Site Communications

FCX
LISTED
NYSE



ICMM
Member



**SAFE
PRODUCTION
MATTERS**

fcx.com

All Operating Sites

FREEPORT
FOREMOST IN COPPER

Heat Stress – 6/4/24

With temperatures rising, staying hydrated is important. Drink plenty of water – don't wait until you get thirsty. Gatorade also helps achieve hydration and replaces electrolytes. Avoid or reduce the amount of caffeine drinks, coffee and energy drinks as these can lead to a quicker dehydrated state. Take additional breaks if needed. Be aware of your fellow workers, especially new team members who aren't yet acclimated, as well as yourself.



Remember the water you drink today is for tomorrow

Plan ahead for a safe and productive shift. Identify cool/shaded locations for breaks. Schedule manual tasks as early as possible. Set up fans and/or misters where possible. Wear loose, lightweight, long-sleeved clothing. The [FCX Heat Stress Guidelines](#) contains additional helpful advice.

Know the symptoms of heat exhaustion:

Headache	Nausea or vomiting
Faintness or dizziness	Weakness or fatigue
Irritability	Thirst
Heavy sweating	Elevated body temperature
Decreased urine output	

If you or a co-worker shows symptoms of a heat exhaustion, follow these guidelines:

- If in the field, activate a “mayday call.”
- If in the townsite, call 911.

Until help arrives, do the following:

- Someone should stay with worker until help arrives.
- Remove worker from hot area and give liquids to drink.
- Remove unnecessary clothing, including shoes and socks.
- Cool the worker with cold compresses or have the worker wash head, face, and neck with cold water.
- Encourage frequent sips of cool water.

CRC Duster – 6/27/24

Fm **FREEMPORT-McMoRAN** | MORENCI OPERATIONS COMMUNICATION

PLEASE PRINT, POST AND DISTRIBUTE THE FOLLOWING INFORMATION
TO EMPLOYEES IN YOUR WORK AREA WHO MAY NOT HAVE ACCESS TO E-MAIL

ALL Planners and Admins, effective immediately, please do not purchase any "CRC Duster" or chemicals requiring a SDS without consulting with Environmental Services. Chemicals requiring a SDS using a PCard is prohibited by the PCard Policy. CRC Duster specifically is no longer approved by Environmental Services due to the chemical content violating our corporate chemical policy.



If you notice any in your area, please send to the Environmental yard for proper disposal

GSC Overtime Communication

- In an effort to evaluate spend and effective immediately, all contractor overtime must be approved by a Freeport department manager. Any work outside of a contractor's normal schedule will need an email approval from a Freeport department manager prior to you providing support. You will then need to forward that approval to your site Contract Administrator or Contract Control Specialist so we can work with the department to provide funding for the additional support. Please reach out to your Contract Administrator, Contract Control Specialist or Chad Corbell if you have any questions.
- CCS Townsite – Nicole Alcaarez -

THE VALUE OF COPPER

Thank You!

Looking for Contractor
Share Volunteers –
Successes/Challenges
/Recent Events

FCX
LISTED
NYSE



ICMM
Member



SAFE
PRODUCTION
MATTERS

fcx.com

All Operating Sites

FREEPORT
FOREMOST IN COPPER