



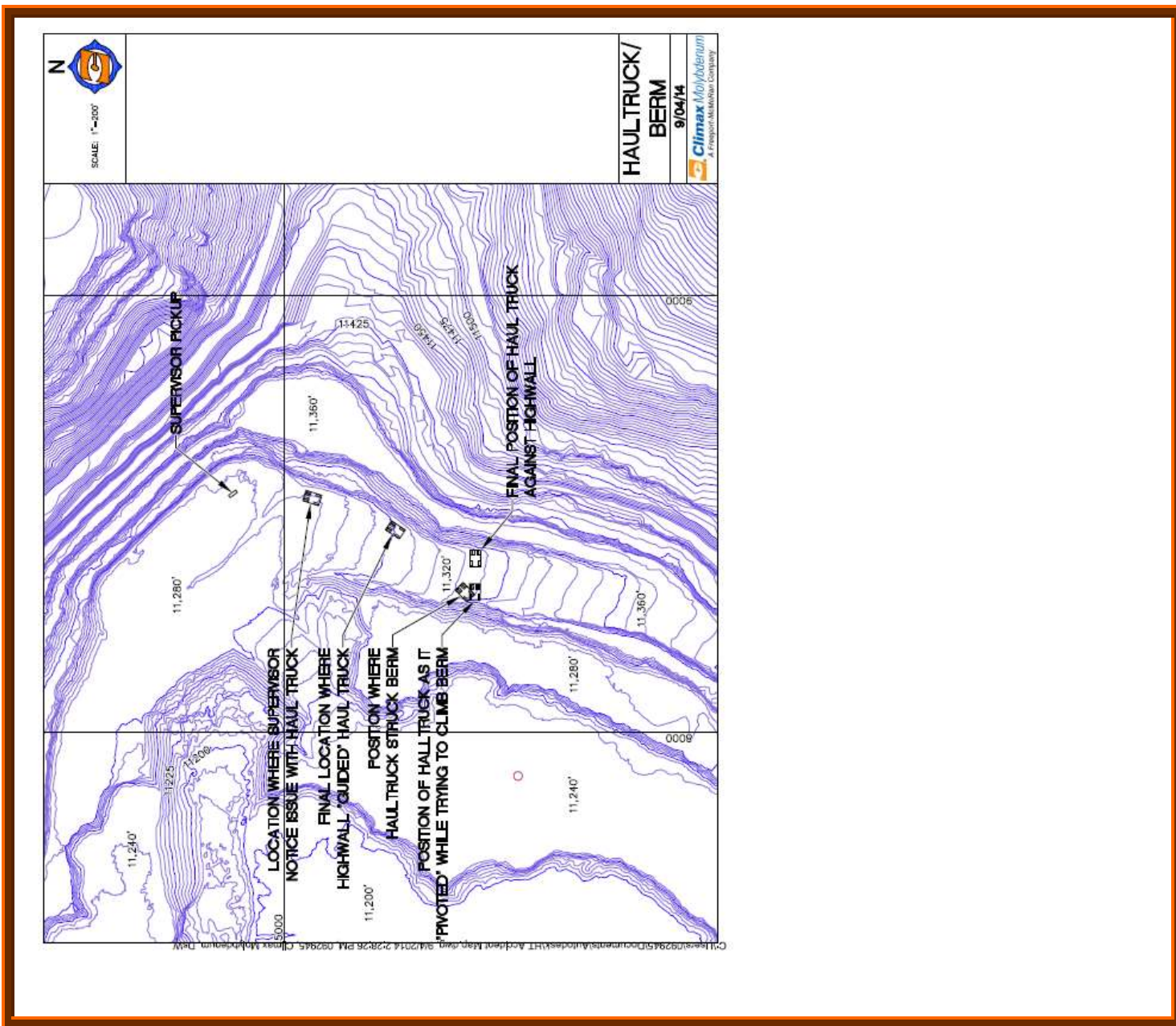
SAFETY ALERT NOTIFICATION

This is NOT an investigation report. It is a NOTIFICATION of a Significant Incident that has taken place at a Freeport-McMoRan location. The information below is a preliminary assessment and not a formal investigation.

OPERATION:	Climax Mine			Incident:	X
ISSUED BY:	Matthew Main, H&S Manager			Injury:	
DATE:	August 27, 2014			Property Damage:	
TIME:	8:00 PM			Process Loss:	
LOCATION/DEPARTMENT:	Mine Operations				
INCIDENT DESCRIPTION:	<p>The supervisor was following the HT 102 from the loader and noticed the haul truck starting to drift to the left, high wall side, of the road. An attempt to contact the driver via radio was unsuccessful. HT 102 continued to "ride" the high wall through the curve and continued directly up hill in the direction of the berm on the right side of the haul road. (See Attached Diagram) The supervisor called a MAY DAY after several unsuccessful attempts to contact the driver and requested resources to the pit. HT 102 contacted the berm at full power and continued to try to power up/through the berm. Due to the slippery conditions and the size of the berm, the haul truck was unable to climb entirely over the berm or power through the berm. The haul truck's initial orientation with the berm caused the back end to pivot until it was perpendicular with the berm. The haul truck was knocked into neutral and the truck rolled back against the high wall. Once the haul truck was stopped against the high wall, the RTD in the area pushed material in front of the left front tire and then the supervisor was able to safely turn the haul truck off from the front bumper. Personnel mounted the haul truck to attend to the driver.</p>				
DETAILS OF INJURY TYPE:	Personal Illness				
POTENTIAL FOR INJURY:	Fatality	Lost Time	Permanent Disability	Other Potential	
	X				
PROBABLE DIRECT CAUSES:	Personal Illness				
IMMEDIATE CORRECTIVE ACTION:	<p>Truck was secured Personnel attended to the driver EMS personnel arrived and transported driver to the Hospital Scene was secured Haul Truck was taken to the shop Investigation was started</p>				
REQUIRED ACTIONS:	<p>Evaluate the size of the haul road berms and consider whether the minimum requirement is sufficient.</p> <p>The minimum required berm height for the Climax site is 6'. (30 CFR 56/57.9300(b)) The Climax Mine has intentionally built berms that are 2+ times greater than the</p>				

minimum required height because of the amount of snow and ice that we see on the haul roads in the winter. Although road surfaces are constantly maintained with gravel and snow removal, the potential for equipment to slide while ascending or descending a ramp in the winter exists. The berms were built to ensure that haul trucks won't power over or travel through berms.

The berms at Climax along the haul roads are approximately 12' – 15' high. At the point of impact, the berm was approximately 13.5' high.







This is NOT an investigation report. It is a NOTIFICATION of a Significant Incident that has taken place at a Freeport-McMoRan operation and is being communicated to enhance safety awareness should a similar situation exist. The information above is a preliminary assessment of the event and is not a formal investigation.