

<b>SAFETY ALERT NOTIFICATION</b>		Safety Alert #	SA – 2017 - 3
<b>Sierrita Utility Knife Incident</b>		IMS #	74548
		OPERATION:	Sierrita
		INCIDENT DATE:	1/24/2017
		TIME:	12:00 pm
		TYPE:	Injury
Issued By: <b>Jonathan Ruiz, Sr. Supervisor</b>		Contact For Additional Details: <b>Dave Robinson, H&amp;S Specialist</b>	

**This is NOT an investigation report. It is a NOTIFICATION of a Significant Incident that has taken place at a Freeport-McMoRan location. The information below is a preliminary assessment and not a formal investigation.**

### INCIDENT DESCRIPTION

During a scheduled 1000-foot belt splice on A3 Conveyor, employee was filleting the cables from end to center in the kneeling position. As this task continued, employee's right arm had become fatigued and he had switched to his left hand to continue this task. At this point, the employee had lost control of his knife from his left hand causing full pull force to jab his knife blade into his left knee.

#### FATAL RISKS

Choose an item.

#### HEALTH AND SAFETY POLICIES

Choose an item.

Choose an item.

Choose an item.

Choose an item.

Choose an item.

#### OTHER SIGNIFICANT RISK (specific to site or task not categorized as global)

- 5.2 Inadequate assessment of risk

#### PROBABLE DIRECT CAUSES

- Body Positioning/Line of Fire
- 3 Layer Chaps (HexArmor) were worn incorrectly (backwards) by the employee
- HexArmor chaps not labeled (Right/Left) for proper usage
- Employee is right handed but had switched to his left hand when he became fatigued
- The employee had no formal training for filleting cables nor properly wearing the PPE

#### IMMEDIATE CORRECTIVE ACTION(S)

- Stand down with belt splice crew to discuss body positioning / line of fire and proper use of PPE
- Communicate incident to all crews
- Contact HexArmor for equipment review

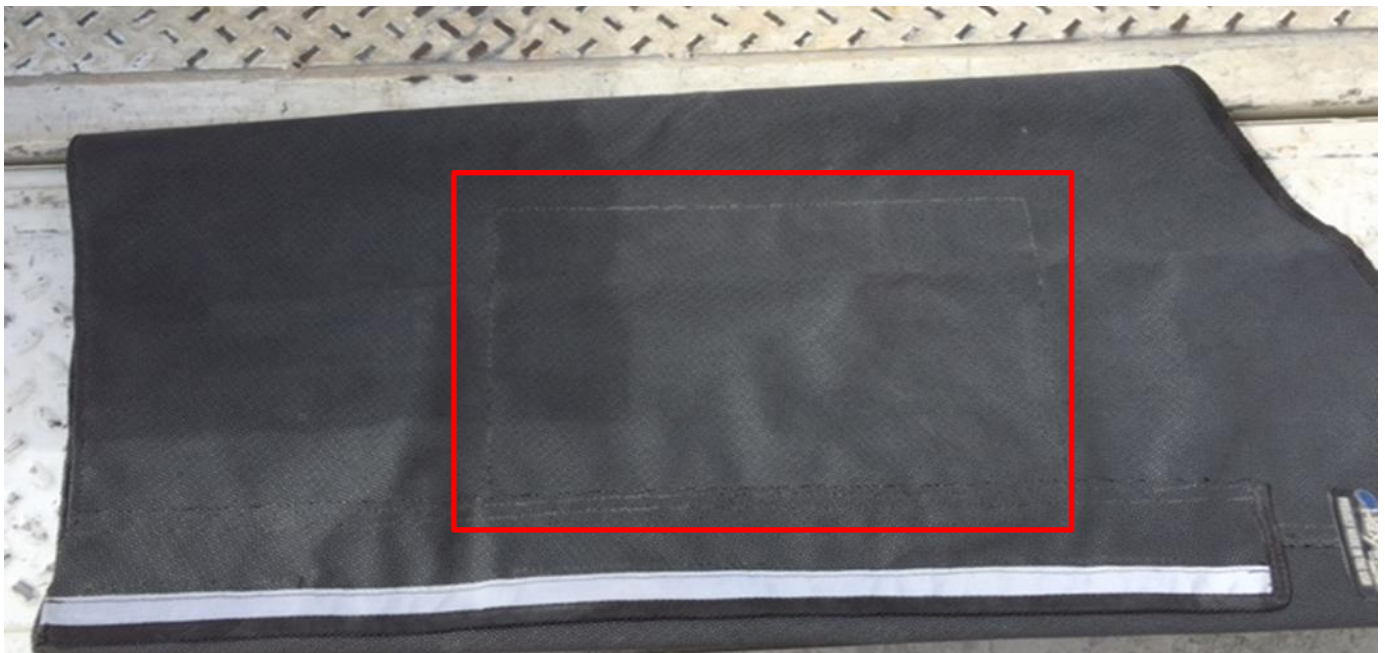
#### REQUIRED ACTIONS(S)

- Review HexArmor PPE with the manufacturer.
- Audit Systems
- Communicate to work force
- Review alternative methods of prepping cable belt (reduce blade exposure)

- FCX sites should evaluate utility knife usage and explore other options to determine if substitution is warranted



Chaps worn backwards, this minimized the cut resistance area to a single layer.



Chaps worn correctly (forward), this is the high impact area that has the 3 layer cut resistance.

**This is NOT an investigation report. It is a NOTIFICATION of a Significant Incident that has taken place at a Freeport-McMoRan operation and is being communicated to enhance safety awareness should a similar situation exist. The information above is a preliminary assessment of the event and is not a formal investigation.**