

DRIVEN BY VALUE



Monthly Contractor Safety Meeting

February 2019

Meeting Agenda

- Facilities
- Emergency Exits/Meeting Point
- Cell Phones
- Safety Share
- This months focus
 - Special Presentation
 - Arianne Johnson – BrightView (FKA Groundskeeper)
 - Environmental Share
 - ???
 - Contractors Health and Safety Manual
 - Section 5.17.9.3 Rigging Requirements
 - PFE's 2018 22, 23 and 25
 - SA's 2018 21 and 22

Environmental Share

Sumps Part 2 of 2 – Operation & Maintenance

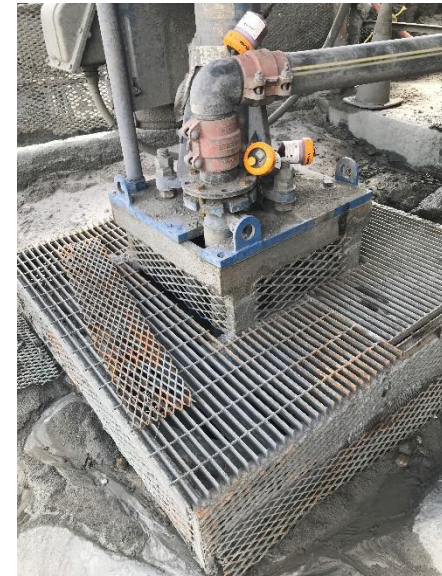
What: A sump is a man-made pit, including any connected troughs or trenches, which is designed to collect and temporarily store water and other spilled fluids.

Why: Capacity and operational status must be followed to ensure sumps remain exempt from the Underground Storage Tank (UST) & the Aquifer Protection Program regulations.

All sumps **must** be operated and maintained to ensure that they are in good working condition to maintain **“exempt”** status

How to maintain sumps

- Know the inspection schedule of sumps in your area,
- Area owners are responsible for understanding how to check for visible cracks on walls or floors when the sump is fully emptied
- Repairs should be made after discovering
- For emergency sumps: the sump is only used during an emergency or maintenance activities and is pumped out within 48 hours of collecting any of solution.



February 2019

Manpower Reports

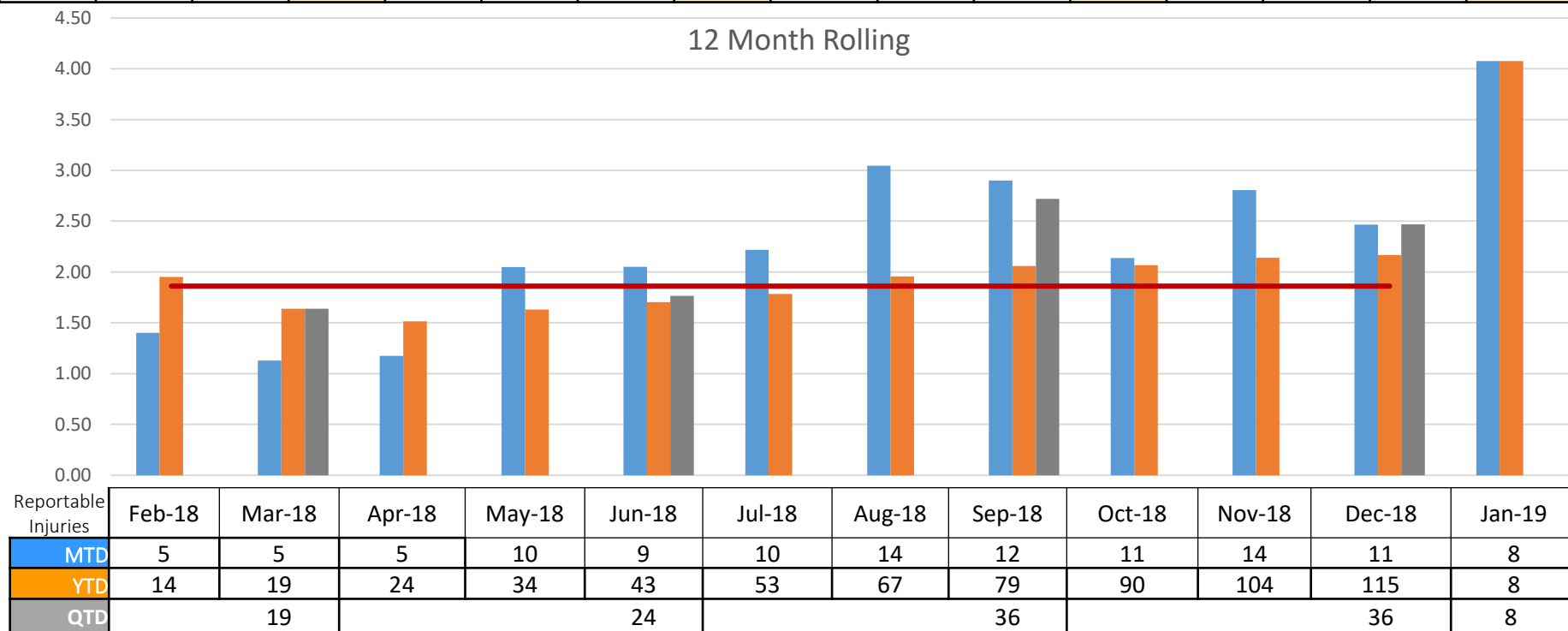
Please have your manpower reports in by the 10th of each month.

Thanks,

Safety Dashboard as of 1/20/2019

| BRANCH W/O LOST TIME INCIDENT | | BRANCH W/O MT or RD INCIDENT | | Year to date Reportable Injuries | Year to date Total Injuries |
|-------------------------------|---------|------------------------------|--------|----------------------------------|-----------------------------|
| Day | Hours | Day | Hours | | |
| 20 | 523,359 | 1 | 26,168 | 8 | 26 |

| REPORTABLE INJURY RATE TRIR | | | | Lost Time Injury Rate LTIR | | | | Property Damage Rate PDIR | | | | Monitor & Actionable Events | | | |
|-----------------------------|------|------|---------|----------------------------|------|------|---------|---------------------------|-------|-------|---------|-----------------------------|------|------|---------|
| MTD | YTD | QTD | Ceiling | MTD | YTD | QTD | Ceiling | MTD | YTD | QTD | Ceiling | MTD | YTD | QTD | Ceiling |
| 8 | 8 | 8 | 1.86 | 0 | 0 | 0 | 0.45 | 44 | 44 | 44 | 13.29 | 0 | 0 | 0 | 0.36 |
| 4.08 | 4.08 | 4.08 | | 0.00 | 0.00 | 0.00 | | 22.42 | 22.42 | 22.42 | | 0.00 | 0.00 | 0.00 | |



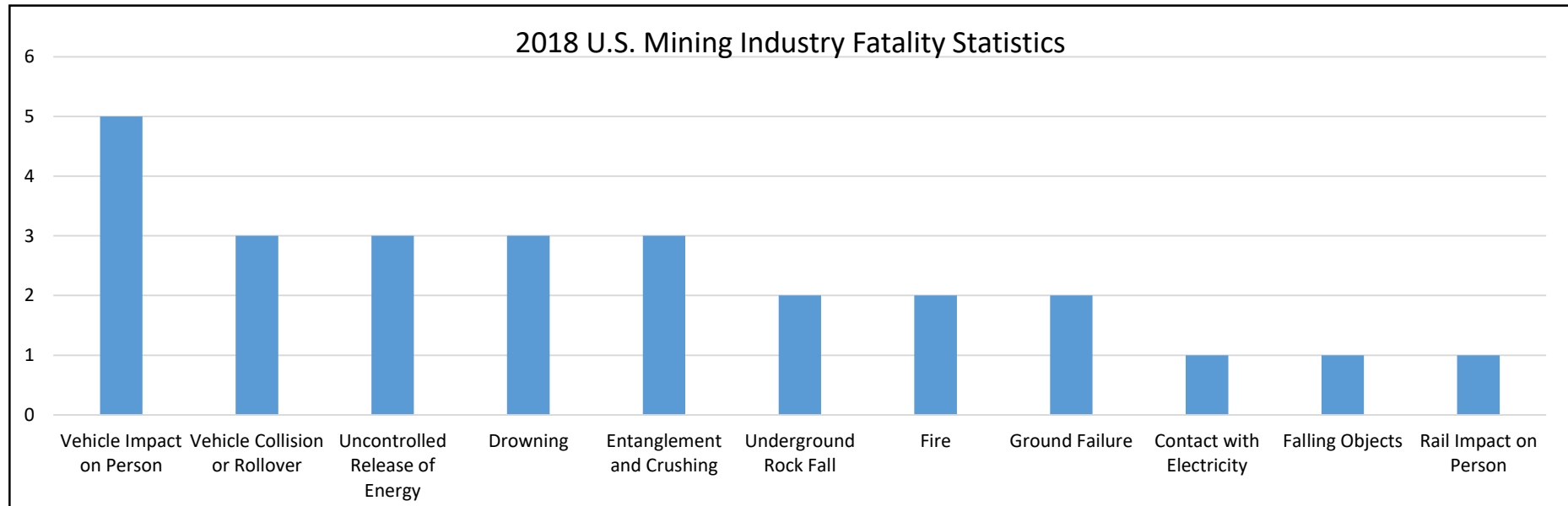
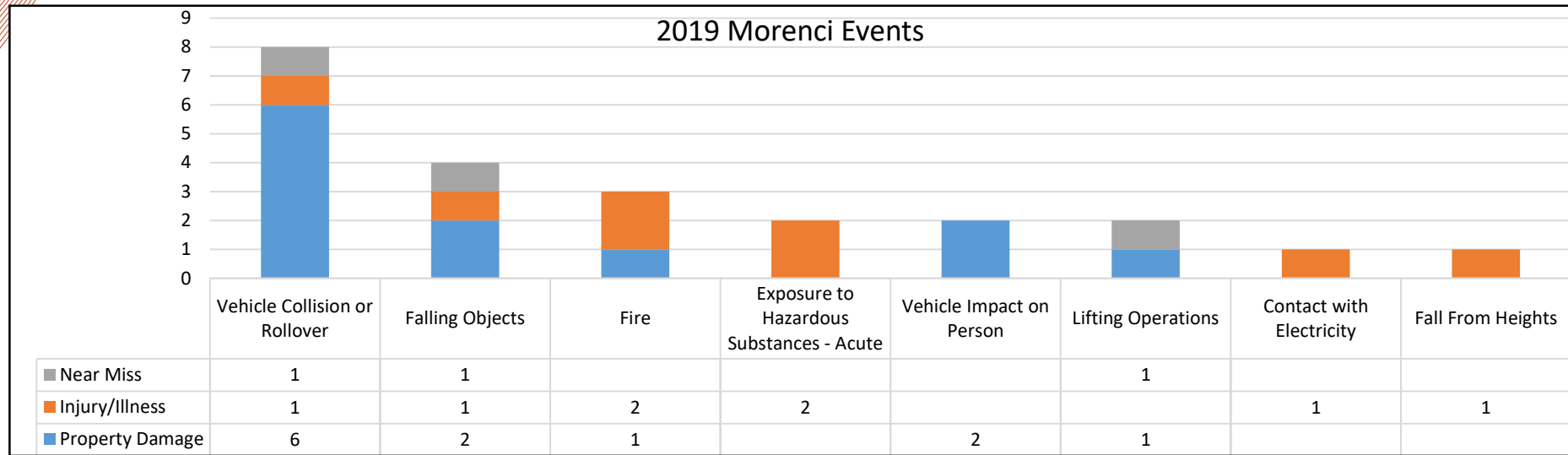
January Injury Report I

| Incident Date | Injury Classification | Organization | Division | Short Description |
|---------------|-----------------------|-----------------------------|----------------------|--|
| 1/2/2019 | First Aid | Mine Organization | Haulage | Employee driving 91 water truck lost traction and rolled truck onto its side. |
| 1/3/2019 | First Aid | Processing Organization | Metcalf Concentrator | While turning off a valve EE felt pain in her lower right abdomen. |
| 1/3/2019 | First Aid | Contractor Organization | Metcalf Concentrator | Employee,temp for Riley Industrial,was splashed with material in the eye. |
| 1/3/2019 | First Aid | Mercantile Organization | Morenci Lanes | Employee made contact with hot grease on right fourth and fifth fingers while cleaning deep fryer. |
| 1/4/2019 | First Aid | Administration Organization | Townsite | EE was in the filter room where a pile of Harborlite Perlite was on the floor. A co-worker began to sweep it up and EE inhaled it. |
| 1/4/2019 | First Aid | Mine Organization | Haulage | HT driver felt sudden pain shoot up back after the hoist cylinders were extended all the way and the bed was all the way up. |
| 1/6/2019 | First Aid | Mine Organization | Haulage | Employee slipped and fell back down when walking down the stairway of the HT592. |
| 1/8/2019 | First Aid | Processing Organization | Morenci Concentrator | Employee repetitively bent over and picked up 5-15 lb rocks and deposits causing a sore back. |
| 1/9/2019 | Medical Treatment | Processing Organization | Crush & Convey | An employee was attempting to remove the lid from the housing when it slipped from their hand and fell onto the employees foot behind the steel toe portion of the boot. |
| 1/10/2019 | First Aid | Mine Organization | Haulage | While operating HT 568,the fire suppression alarm went off and as exiting she inhaled fire suppressant. |
| 1/10/2019 | First Aid | Contractor Organization | Maintenance Services | An Empire was exiting the enclosure at Upper Eagle Creek Pump Station and their footing causing pain in their ankle. |
| 1/12/2019 | Restricted Duty | Mercantile Organization | Community Center | While participating in the Polar Plunge at the Community Center Pool,an employee injured their ankle. |
| 1/12/2019 | Restricted Duty | Mine Organization | Haulage | The operator of the 632HT was traveling on the Lone Star Haul Road and hit a pot hole causing the bed to raise and slam back down,resulting in pain to the lower back. |
| 1/13/2019 | First Aid | Processing Organization | Crush & Convey | While spraying down carry back dirt piles on the agglomeration drum tower/walkway an employee felt a burning sensation on their face. |
| 1/13/2019 | First Aid | Processing Organization | Hydromet | Employee was underneath the H-cell line changing out a drain flange and felt minor shock to the right forearm. |
| 1/14/2019 | First Aid | Mine Organization | Haulage | The operator of the 621HT was coming down the ramp, began to slide, and made contact with a berm causing damage to the emergency boarding ladder. |

January Injury Report II

| Incident Date | Injury Classification | Organization | Division | Short Description |
|---------------|-----------------------|---------------------|----------------------|--|
| 01/15/2019 | First Aid | Mine Operations | Haulage Operations | An employee used his right foot to lift up and engage the stairway latch and heard a loud pop from their ankle. |
| 01/16/2019 | First Aid | Mine Operations | Haulage Operations | The operator of 514 was loading when the dipper opened prematurely shaking the truck causing discomfort in operators neck. |
| 01/16/2019 | First Aid | Mine Operations | Haulage Operations | An operator claims the unexpected jolt caused discomfort in their lower left shoulder. |
| 01/16/2019 | Restricted Duty | Resource Management | Geology | A sampler was using a drill when they hit rock chips causing the drill to torque and sprain the lower arm. |
| 01/16/2019 | Restricted Duty | Mine Maintenance | Line Electricians | A line electrician attempted to move a jib and felt a pop in shoulder. |
| 01/19/2019 | Restricted Duty | Administration | Townsite | A Sollers Construction employee tripped on a piece of rebar,landing on a branch. |
| 01/19/2019 | First Aid | Mine Operations | Haulage Operations | The operator of the 626HT was refueling at the 4560 Fuel Dock and smelled smoke then began to feel dizzy. |
| 01/19/2019 | First Aid | Concentrator | Morenci Concentrator | An employee cut their finger on the metal edge of the launder but refused treatment. |
| 01/20/2019 | First Aid | Mine Operations | Haulage Operations | The operator of the 525HT was rough loaded at the 46 Shovel. |

2019 Morenci Fatal Risks Comparison



Contractor On-Boarding

All contract companies must be on-boarded here at the Morenci site. This includes **all sub-contractors**.

Freeport departments (GSC, Environmental, Safety and Training) will ensure the on-boarding of all General Contractors.

The **General Contractor is responsible** to ensure ALL of their sub's are on-boarded with the same process and departments.



Contractor On-Boarding

This year we are stressing the importance of this sub-contractor on-boarding to all the General Contractors.

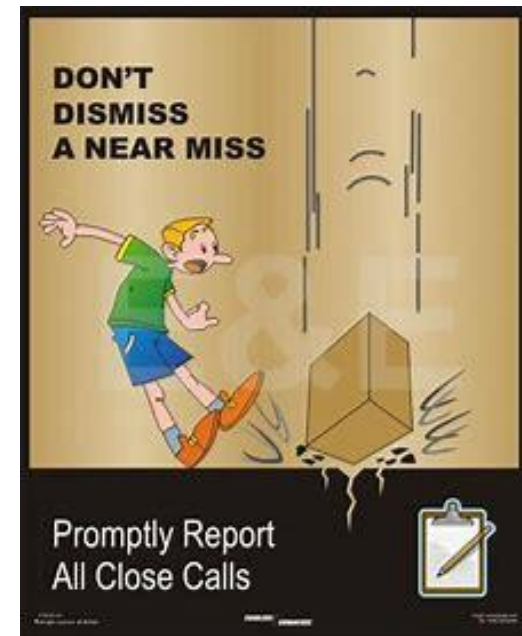
All contractors found on-site that are not on-boarded completely will be immediately escorted off property.

Please ensure you on-board all of your sub's,,,, Thanks



Incident Reporting

All employees shall promptly report any incident (including near-misses), no matter how slight, to their supervisor. All incidents shall also be reported to the Freeport-McMoRan Safety Department immediately.



Incident Reporting

A completed “Incident Reporting Form” must be provided to the Freeport-McMoRan site Safety Department promptly of all injuries, regardless of severity. Contractor needs to coordinate record information and details of an incident using the site Incident Report form.



Incident Reporting

Failure to promptly report a workplace injury, illness or significant event may result in cancellation of the contract.

Incident Reporting

Incidents of a serious nature may require “immediate” notification to government agencies. It is the responsibility of each contractor to ensure its leaders identify what incidents require “immediate” notification and maintain a list of numbers of who must be notified, and the time limits required (15 minutes in some cases with MSHA). If time permits a brief call to Freeport-McMoRan representatives will be made prior to notifying agencies such as MSHA. In some cases the site may make the call to the agency. Check with local site H&S for site-specific requirements.

3 Prioritized Safety Goals

- 1.Prevent Fatalities*
- 2.Reduce Incident Severity*
- 3.Improve Continuously*

What has been noticed this lately?



POWERED
BY COPPER



**Make
Safety
Personal...**

